



**Specialised  
Fabric  
Solutions**

**PRODUCT  
CATALOGUE  
2023**

**—**

**SCREEN  
SYSTEMS**

# **QCD LIMITED**

## Specialised Fabric Solutions

**Nature is demanding, so we demand a lot from our textiles.**

Whether providing much-needed shade for a sun-baked terrace or sailing a yacht around the world, you need to know your fabric systems are up to the challenge. QCD has been supplying customers in the commercial, residential and marine markets for over 60 years. With a huge range of specialised textiles and hardware sourced from around the world, our team can help you specify and deliver a solution that works.

The wind, UV rays and ocean spray can do their worst. Relax, because you're covered.

TO PLACE AN ORDER OR FOR  
PRODUCT ENQUIRIES

## CONTACT US

### **North Island**

#### **Office & Warehouse**

373D Neilson Street, Penrose,  
Auckland, 1061  
New Zealand  
09 815 7500  
**[sales@qcd.co.nz](mailto:sales@qcd.co.nz)**

### **South Island**

#### **Office & Warehouse**

24 Disraeli Street, Addington  
Christchurch, 8024  
New Zealand  
03 384 9329  
**[chchsales@qcd.co.nz](mailto:chchsales@qcd.co.nz)**

**[qcd.co.nz](http://qcd.co.nz)**







# SCREEN SYSTEMS

## CONTENTS

### ZIPTRAK®

TRACKS & CHANNELS	5
SPLINE TAPE	6
PLASTIC COMPONENTS	7
SPECIAL ACCESSORIES	8
BOTTOM BAR & ACCESSORIES	9
KEYWAY TUBES	9
SPRINGS & ADAPTORS	10
CAST END BRACKETS	10
PELMET & END PLATES	11
PELMET ACCESSORIES	12

### OMNI SCREEN

GEARBOX BLINDS	15
GEARBOX KIT	16
CHANNEL & WIRE GUIDE BLINDS	17
PELMET & FLASHING	18

MOTORISATION	19
--------------	----

# ZIPTRAK®



## PATENTED TRACK GUIDE SYSTEM

Ziptrak® screens maximise your living options by connecting indoor and outdoor environments to make one space. They also provide privacy and protection from the elements, while controlling airflow, light and temperature. As well as being robust and aesthetically pleasing, Ziptrak® has a patented track-guided system that ensures screens easily glide up or down and stop in the position you require.

## TRACKS

CODE	DESCRIPTION	PACK QTY
ZIPE001-2.5-MF	TRACK MILL FINISH 2.5M LENGTH	20
ZIPE001-2.5-PCB	TRACK POWDER COATED BLACK 2.5M LENGTH	20
ZIPE001-2.5-PCW	TRACK POWDER COATED WHITE 2.5M LENGTH	20
ZIPE001-2.5-PCIS	TRACK POWDER COATED IRONSAND 2.5M LENGTH	20

CODE	DESCRIPTION	PACK QTY
ZIPE001-3.0-MF	TRACK MILL FINISH 3.0M LENGTH	20
ZIPE001-3.0-PCB	TRACK POWDER COATED BLACK 3.0M LENGTH	20
ZIPE001-3.0-PCW	TRACK POWDER COATED WHITE 3.0M LENGTH	20
ZIPE001-3.0-PCIS	TRACK POWDER COATED IRONSAND 3.0M LENGTH	20

CODE	DESCRIPTION	PACK QTY
ZIPE001-5.5-MF	TRACK MILL FINISH 5.5M LENGTH	10



## REVEAL CHANNELS

CODE	DESCRIPTION	PACK QTY
ZIPEB010-2.5-MF	30X25 BRACKET CHANNEL MILL FINISH 2.5M LENGTH	20
ZIPEB010-2.5-PCB	30X25 BRACKET CHANNEL POWDER COATED BLACK 2.5M LENGTH	20
ZIPEB010-2.5-PC	30X25 BRACKET CHANNEL POWDER COATED WHITE 2.5M LENGTH	20
ZIPEB010-2.5-PCIS	30X25 BRACKET CHANNEL POWDER COATED IRONSAND 2.5M LENGTH	20

CODE	DESCRIPTION	PACK QTY
ZIPEB010-3.0-MF	30X25 BRACKET CHANNEL MILL FINISH 3.0M LENGTH	20
ZIPEB010-3.0-PCB	30X25 BRACKET CHANNEL POWDER COATED BLACK 3.0M LENGTH	20
ZIPEB010-3.0-PCW	30X25 BRACKET CHANNEL POWDER COATED WHITE 3.0M LENGTH	20
ZIPEB010-3.0-PCIS	30X25 BRACKET CHANNEL POWDER COATED IRONSAND 3.0M LENGTH	20

CODE	DESCRIPTION	PACK QTY
ZIPEB010-5.5-MF	30X25 BRACKET CHANNEL MILL FINISH 5.5M LENGTH	10



## FACE FIX CHANNELS

CODE	DESCRIPTION	PACK QTY
ZIPEB011-2.5-MF	FACE FIX CHANNEL MILL FINISH 2.5M LENGTH	10
ZIPEB011-2.5-BL	FACE FIX CHANNEL POWDER COATED BLACK 2.5M LENGTH	10
ZIPEB011-2.5-PCW	FACE FIX CHANNEL POWDER COATED WHITE 2.5M LENGTH	10
ZIPEB011-2.5-PCIS	FACE FIX CHANNEL POWDER COATED IRONSAND 2.5M LENGTH	10

CODE	DESCRIPTION	PACK QTY
ZIPEB011-3.0-MF	30X25 BRACKET CHANNEL MILL FINISH 3.0M LENGTH	10
ZIPEB011-3.0-BL	30X25 BRACKET CHANNEL POWDER COATED BLACK 3.0M LENGTH	10
ZIPEB011-3.0-WH	30X25 BRACKET CHANNEL POWDER COATED WHITE 3.0M LENGTH	10
ZIPEB011-3.0-IS	30X25 BRACKET CHANNEL POWDER COATED IRONSAND 3.0M LENGTH	10





## SIDE SPLINE TAPE

CODE	DESCRIPTION	PACK QTY
ZIPE045BL	CORDURA SPLINE TAPE BLACK (NEW STYLE)	42-50M
ZIPE045WH	CORDURA SPLINE TAPE WHITE (NEW STYLE)	42-50M
ZIPE045DG	CORDURA SPLINE TAPE CHARCOAL (NEW STYLE)	42-50M
ZIPE045LG	CORDURA SPLINE TAPE LIGHT GREY (NEW STYLE)	42-50M
ZIPE045CR	CORDURA SPLINE TAPE CREAM (NEW STYLE)	42-50M
ZIPE045BE	CORDURA SPLINE TAPE BEIGE (NEW STYLE)	42-50M



CODE	DESCRIPTION	PACK QTY
ZIPE021	CORDURA SPLINE TAPE BLACK (OLD STYLE)	42-50M
ZIPE020	CORDURA SPLINE TAPE WHITE (OLD STYLE)	42-50M
ZIPE024	CORDURA SPLINE TAPE CHARCOAL (OLD STYLE)	42-50M
ZIPE0201	CORDURA SPLINE TAPE LIGHT GREY (OLD STYLE)	42-50M
ZIPE022	CORDURA SPLINE TAPE CREAM (OLD STYLE)	42-50M
ZIPE023	CORDURA SPLINE TAPE BEIGE (OLD STYLE)	42-50M



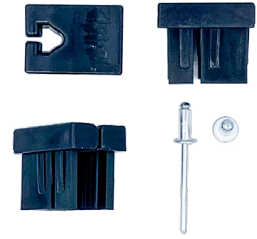
## TOP & BOTTOM EXTRUDED PVC SPLINE TAPE

CODE	DESCRIPTION	PACK QTY
ZIPE041	TOP & BOTTOM EXTRUDED PVC SPLINE CLEAR	150M
ZIPE041B	TOP & BOTTOM EXTRUDED PVC SPLINE BLACK	150M
ZIPE041WH	TOP & BOTTOM EXTRUDED PVC SPLINE WHITE	150M
ZIPE041G	TOP & BOTTOM EXTRUDED PVC SPLINE GREY	150M
ZIPE041PB	TOP & BOTTOM EXTRUDED PVC SPLINE PAPERBARK	150M
ZIPE041WG	TOP & BOTTOM EXTRUDED PVC SPLINE WOODLAND GREY	150M
ZIPE041CR	TOP & BOTTOM EXTRUDED PVC SPLINE CREAM	150M



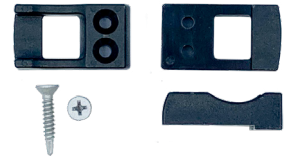
## GUIDE FUNNELS

CODE	DESCRIPTION	PACK QTY
ZIPE025	GUIDE FUNNELS BLACK ABS (SINGLES)	20



## TOP STOPS

CODE	DESCRIPTION	PACK QTY
ZIPE0272	TOP STOPS, HIGH IMPACT NYLON BLACK INCLUDING SCREWS (PAIR)	20



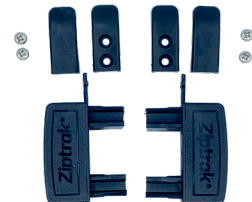
## CENTRE LOCK KIT

CODE	DESCRIPTION	PACK QTY
ZIPE0352	CENTRE LOCK RELEASE MECHANISM KIT	10
ZIPE03521	CENTRE LOCK RELEASE MECHANISM KIT 1 PACK (ALL HARDWARE INCLUDING TOP STOPS & GUIDE FUNNELS)	10



## BOTTOM BAR GUIDE KIT

CODE	DESCRIPTION	PACK QTY
ZIPE0261	BOTTOM BAR GUIDE KIT - FOR MOTORISATION	10



## CENTRE LOCK KIT FOR XHD

CODE	DESCRIPTION	PACK QTY
ZIPE03522	CENTRE LOCK RELEASE MECHANISM KIT FOR XHD BOTTOM BAR (BOTTOM BAR HARDWARE ONLY)	10



## BOTTOM BAR GUIDE KIT FOR XHD

CODE	DESCRIPTION	PACK QTY
ZIPE0262	BOTTOM BAR GUIDE KIT - FOR MOTORISATION	10



## REVERSE HANDLE KIT

CODE	DESCRIPTION	PACK QTY
ZIPE0354	REVERSE HANDLE KIT FOR CENTRAL LOCK MECHANISM	10



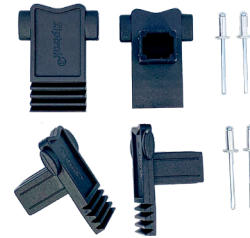
## CENTRAL LOCK FACE FIX

CODE	DESCRIPTION	PACK QTY
ZIPE0355	CENTRAL LOCK FACE FIX STOPPERS WITH SCREWS	10



## TRACK BOTTOM CAP

CODE	DESCRIPTION	PACK QTY
ZIPE0273	TRACK BOTTOM CAP WITH RIVET	20



## SPECIAL ACCESSORIES

CODE	DESCRIPTION	PACK QTY
ZIPE06022	PREP TOOL	EACH

This tool smooths the track inner-edges by re-shaping them in seconds, delivering a uniform result every time.



CODE	DESCRIPTION	PACK QTY
ZIPE101	REMOVABLE POST COMPONENT KIT	10



CODE	DESCRIPTION	PACK QTY
ZIPE50001	SWIFTEE OUTDOOR BLIND CLEANER 1.25L BOTTLE	9





# BOTTOM BAR & ACCESSORIES

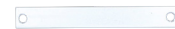
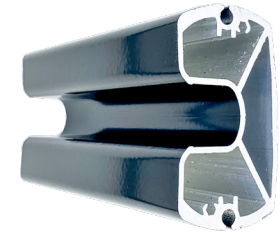
CODE	DESCRIPTION	PACK QTY
ZIPE0301MF	ALUMINIUM BOTTOM BAR MILL FINISH 5.8M LENGTH	4
ZIPE0301BL	ALUMINIUM BOTTOM BAR BLACK 5.8M LENGTH	4
ZIPE0301WH	ALUMINIUM BOTTOM BAR WHITE 5.8M LENGTH	4
ZIPE0301IS	ALUMINIUM BOTTOM BAR IRONSAND 5.8M LENGTH	4

CODE	DESCRIPTION	PACK QTY
ZIPE0303MF	H/D ALUMINIUM BOTTOM BAR MILL FINISH 6.0M LENGTH	2
ZIPE0303BL	H/D ALUMINIUM BOTTOM BAR BLACK 6.0M LENGTH	2
ZIPE0303WH	H/D ALUMINIUM BOTTOM BAR WHITE 6.0M LENGTH	2
ZIPE0303IS	H/DALUMINIUM BOTTOM BAR IRONSAND 6.0M LENGTH	2

CODE	DESCRIPTION	PACK QTY
ZIPE0304MF	XHD ALUMINIUM BOTTOM BAR MILL FINISH 6.0M LENGTH	1

CODE	DESCRIPTION	PACK QTY
ZIPE03021-15	BOTTOM WEATHER STRIP 150M ROLL	150
ZIPE03021-30	BOTTOM WEATHER STRIP 50M ROLL	50

CODE	DESCRIPTION	PACK QTY
ZIPE0353	12 X 3 ANODISED FLAT BAR FOR LOCK 4M	40



# KEYWAY TUBES

CODE	DESCRIPTION	PACK QTY
ZIPE0316-6.0	72MM KEYWAY TUBE ANODIZED ALUMINIUM 6M	5

CODE	DESCRIPTION	PACK QTY
ZIPE0315-4.8	86MM KEYWAY TUBE ANODIZED ALUMINIUM 4.8M	5

CODE	DESCRIPTION	PACK QTY
ZIPE0314-6.0	93MM KEYWAY TUBE ANODIZED ALUMINIUM 6M	2



## SPRINGS & ADAPTORS

CODE	DESCRIPTION	PACK QTY
ZIPE0700	63MM SUPERSPRING STANDARD (GREEN LOCKING PAWL)	10
ZIPE0701	63MM SUPERSPRING MEDIUM (GREEN LOCKING PAWL)	10
ZIPE0702	63MM SUPERSPRING SHORT (GREEN LOCKING PAWL)	10
ZIPE0703	63MM SUPERSPRING HEAVY DUTY (GREY LOCKING PAWL)	10
ZIPE0704	63MM SUPERSPRING HELPER (YELLOW LOCKING PAWL)	10

CODE	DESCRIPTION	PACK QTY
ZIPE0732	86MM/93MM ADAPTORS FOR SUPERSPRINGS	10

CODE	DESCRIPTION	PACK QTY
ZIPE0735	86MM/93MM ADAPTORS FOR MOTORISED BLINDS	10

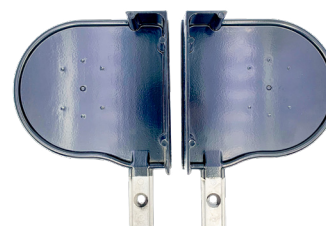
CODE	DESCRIPTION	PACK QTY
ZIPE0734	72MM CROWN, IDLER, PIVOT PIN AND PLATE FOR MOTORISED BLINDS	10



## CAST END BRACKETS

CODE	DESCRIPTION	PACK QTY
ZIPE0341MF	ZIPTRAK CAST END BRACKET MILL FINISH	25 PAIR
ZIPE0341PCB	ZIPTRAK CAST END BRACKET POWDER COATED BLACK	25 PAIR
ZIPE0341PCW	ZIPTRAK CAST END BRACKET POWDER COATED WHITE	25 PAIR
ZIPE0341PCIS	ZIPTRAK CAST END BRACKET POWDER COATED IRONSAND	25 PAIR

CODE	DESCRIPTION	PACK QTY
ZIPE0342MF	ZIPTRAK MOTORISED NO U CAST END BRACKET MILL FINISH	25 PAIR
ZIPE03412BL	ZIPTRAK MOTORISED NO U CAST END BRACKET BLACK	25 PAIR
ZIPE03412WH	ZIPTRAK MOTORISED NO U CAST END BRACKET WHITE	25 PAIR
ZIPE03412IS	ZIPTRAK MOTORISED NO U CAST END BRACKET IRONSAND	25 PAIR



# 135MM STREAMLINE PELMET & END PLATES

## 135 STREAMLINE PELMET FRONT COVER

CODE	DESCRIPTION	PACK QTY
ZIPE06352-6.5MF	135MM STREAMLINE PELMET FRONT COVER MILL FINISH 6.5M LENGTH	2
ZIPE06352-6.5BL	135MM STREAMLINE PELMET FRONT COVER BLACK 6.5M LENGTH	2
ZIPE06352-6.5WH	135MM STREAMLINE PELMET FRONT COVER WHITE 6.5M LENGTH	2
ZIPE06352-6.5IS	135MM STREAMLINE PELMET FRONT COVER IRONSAND 6.5M LENGTH	2



## 135 STREAMLINE PELMET TOP/BACK COVER

CODE	DESCRIPTION	PACK QTY
ZIPE06353-6.5MF	135MM STREAMLINE PELMET TOP/BACK COVER MILL FINISH 6.5M LENGTH	2
ZIPE06353-6.5BL	135MM STREAMLINE PELMET TOP/BACK COVER BLACK 6.5M LENGTH	2
ZIPE06353-6.5WH	135MM STREAMLINE PELMET TOP/BACK COVER WHITE 6.5M LENGTH	2
ZIPE06353-6.5IS	135MM STREAMLINE PELMET TOP/BACK COVER IRONSAND 6.5M LENGTH	2



## 135 STREAMLINE PELMET END PLATES

CODE	DESCRIPTION	PACK QTY
ZIPE063MF	135MM STREAMLINE PELMET END PLATES MILL FINISH	25 PAIR
ZIPE063BL	135MM STREAMLINE PELMET END PLATES BLACK	25 PAIR
ZIPE063WH	135MM STREAMLINE PELMET END PLATES WHITE	25 PAIR
ZIPE063IS	135MM STREAMLINE PELMET END PLATES IRONSAND	25 PAIR



CODE	DESCRIPTION	PACK QTY
ZIPE0631MF	135MM STREAMLINE PELMET END PLATES NO U SHAPE MILL FINISH	25 PAIR
ZIPE0631BL	135MM STREAMLINE PELMET END PLATES NO U SHAPE BLACK	25 PAIR
ZIPE0631WH	135MM STREAMLINE PELMET END PLATES NO U SHAPE WHITE	25 PAIR
ZIPE0631IS	135MM STREAMLINE PELMET END PLATES NO U SHAPE IRONSAND	25 PAIR



## EXTRUDED FRONT FLASHING

CODE	DESCRIPTION	PACK QTY
ZIPE0885MF	EXTRUDED FRONT FLASHING MILL FINISH 6.0M	10
ZIPE0885BL	EXTRUDED FRONT FLASHING BLACK 6.0M	10
ZIPE0885WH	EXTRUDED FRONT FLASHING WHITE 6.0M	10
ZIPE0885IS	EXTRUDED FRONT FLASHING IRONSAND 6.0M	10





# 165MM STREAMLINE PELMET & END PLATES

## 165 STREAMLINE PELMET - 3 PART FRONT, TOP & BACK

CODE	DESCRIPTION	PACK QTY
ZIPE06150-6.5MF	165MM STREAMLINE PELMET BACK COVER MILL FINISH 6.5M LENGTH	2
ZIPE06151-6.5MF	165MM STREAMLINE PELMET TOP COVER MILL FINISH 6.5M LENGTH	2
ZIPE06152-6.5MF	165MM STREAMLINE PELMET FRONT COVER MILL FINISH 6.5M LENGTH	2



## 165 STREAMLINE PELMET END PLATES

CODE	DESCRIPTION	PACK QTY
ZIPE061MF	165MM STREAMLINE PELMET END PLATES MILL FINISH	25 PAIR
ZIPE0612MF	165MM STREAMLINE PELMET END PLATES NO U SHAPE CRADLE MILL FINISH	25 PAIR



# STREAMLINE PELMET ACCESSORIES

CODE	DESCRIPTION	PACK QTY
ZIPE065	STREAMLINE PELMET BRUSH INSERT LARGE	150M
ZIPE065C	STREAMLINE PELMET BRUSH INSERT 13MM	500M



CODE	DESCRIPTION	PACK QTY
ZIPE0777	SCREWS FOR STREAMLINE END PLATES #6X¾" STAINLESS STEEL PHILLIPS COUNTER SUNK HEAD SCREW PACK OF 500	500



CODE	DESCRIPTION	PACK QTY
ZIPE068	PLASTIC INSERT FOR 135MM STREAMLINE PELMET	EACH



CODE	DESCRIPTION	PACK QTY
ZIPE069-165	BACK COVER BRACKET FOR 165MM STREAMLINE PELMET	EACH







# OMNI SCREEN



Sleek, stylish and durable, the Omni Screen incorporates smart design and practicality. Shade and privacy are instantly provided thanks to the automated or hand-operated system.

Omni Screen offers three different systems to best suit the application, Omni Lite, Omni Guide & Omni Channel.

**Omni Lite** is a minimal straight drop screen which anchors to the ground when lowered and rolls neatly away when not in use.

**Omni Guide** A wire guided straight drop screen which allows the user to stop at any level in the drop. The wire guide allows safety of operation when rolling away.

**Omni Channel** Has the addition of side channels to increase protection and provide a streamlined finish. A selection of colours are available to suit any décor, delivering a combination of style and functionality.



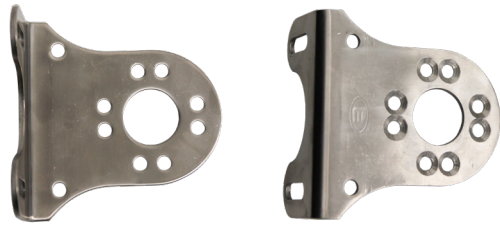
# GEARBOX BLINDS

## GEARBOXES



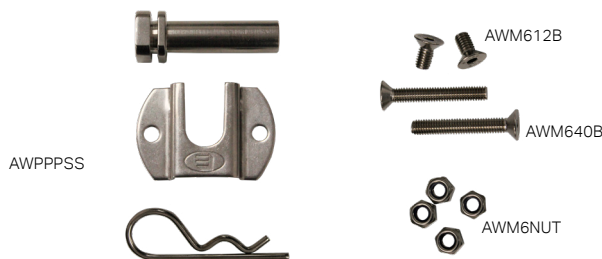
CODE	DESCRIPTION
AWGB71B	GEAR BOX 7:1 BLACK
AWGB71W	GEAR BOX 7:1 WHITE
AWGB71G	GEAR BOX 7:1 GREY
AWM6NUT	M6 NUTS FOR GEAR BOX BRACKETS & PLATES
AWM640B	M6 BOLT FOR GEAR BOX STAINLESS STEEL 40MM

## GEARBOX BRACKETS



CODE	DESCRIPTION
AWGBPLSS	PLATE 65MM - STAINLESS
AWGBBKT65SS	BRACKET 65MM - STAINLESS
AWGBBKT80SS	BRACKET 80MM - STAINLESS

## PIVOT PIN & PLATES



CODE	DESCRIPTION
AWPPSS	PIVOT PIN & PLATE - STAINLESS STEEL
AWM6NUT	NUTS FOR PIVOT PIN & PLATE - STAINLESS STEEL
AWM612B	M6 X 12MM BOLT 304SS CSK SOCKET SCREW
AWM640B	M6 X 40MM BOLT 304SS CSK SOCKET SCREW

## CRANK HANDLES



CODE	DESCRIPTION	COLOUR
AWCH0900	CRANK HANDLE 900MM	GREY, WHITE, BLACK
AWCH1200	CRANK HANDLE 1200MM	GREY, WHITE, BLACK
AWCH1500	CRANK HANDLE 1500MM	GREY, WHITE, BLACK
AWCH1800	CRANK HANDLE 1800MM	GREY, WHITE, BLACK
AWCH2100	CRANK HANDLE 2100MM	GREY, WHITE, BLACK
AWCH2400	CRANK HANDLE 2400MM	GREY, WHITE, BLACK

## KEYWAY TUBE ENDS



CODE	DESCRIPTION
AWDE70	DRIVE END 70MM
AWIE70	IDLER END W/HOLE 70MM
AWDE78	DRIVE END 78MM
AWIE78	IDLER END W/HOLE 78MM

## KEYWAY TUBES



CODE	DESCRIPTION
AWTUBE706	KEYWAY TUBE 70MM - ALUMINIUM - 6M
AWTUBE784-OMNI	KEYWAY TUBE 78MM - ANODISED - 4M
AWTUBE786-OMNI	KEYWAY TUBE 78MM - ANODISED - 6M

# GEARBOX KIT

Includes all hardware needed for a gearbox

One Gearbox

- Black - AWGB71B
- White - AWGB71W
- Grey - AWGB71G

One Pivot Pin & Plate Set

- AWPPSS

Four nyloc nuts for pivot pin & plate and gearbox stainless steel

- AWM6NUT

Two bolts M6 x 12mm bolt 304SS CSK socket screw

- AWM612B

Two bolts M6 x 40mm bolt 304SS CSK socket screw

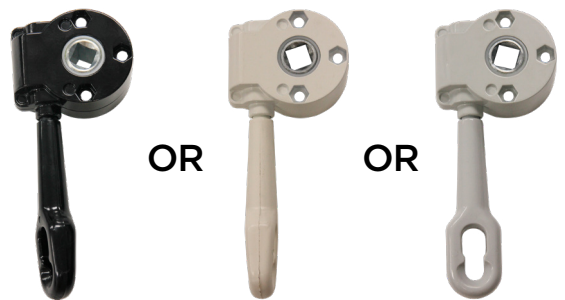
- AWM640B

One pair of Keyway Tube Ends

- 70mm Drive end AWDE70 & 70mm Idler end AWIE70
- 78mm Drive end AWDE78 & 78mm Idler end AWIE78

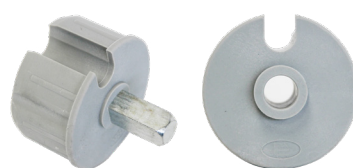
One set of Gearbox brackets

- 65mm AWGBBKT65SS
- 80mm AWGBBKT80SS



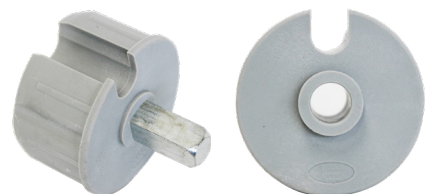
OR

OR



70mm

OR



78mm



65mm

OR



80mm

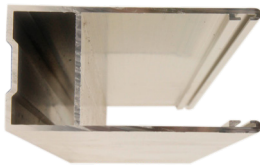
# CHANNEL & WIRE GUIDE BLINDS

## OMNI GUIDE



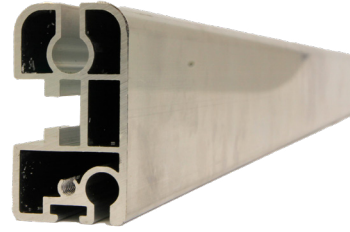
CODE	DESCRIPTION
OMNI-RLSRT	WIRE GUIDE RAPID LOCK SWAGE-LESS RELEASE TOOL 316SS
OMNI-WGAB	WIRE GUIDE ANGLE BRACKET 316SS
OMNI-WGBRECS	WIRE GUIDE BOTTOM TAIL END CAP 3MM S/S
OMNI-WGBUSH	WIRE GUIDE TOP BUSH S/S
OMNI-WGDM	WIRE GUIDE DECK MOUNT 316SS
OMNI-WGT15	WIRE GUIDE TENSIONER RAPID LOCK M6*15MM 316SS
OMNI-WGT35	WIRE GUIDE TENSIONER RAPID LOCK M6*35MM 316SS
OMNI-WIRE	S/S WIRE 3.2MM 1X19

## OMNI CHANNEL



CODE	DESCRIPTION
OMNI-SCBI	SIDE CHANNEL BRUSH INSERT
OMNI-SCMF2.5	SIDE CHANNEL M/F 2.5M
OMNI-SCMF3.0	SIDE CHANNEL M/F 3.0M
OMNI-SCMF6.0	SIDE CHANNEL M/F 6.0M
OMNI-SCBK2.5	SIDE CHANNEL BLACK 2.5M
OMNI-SCBK3.0	SIDE CHANNEL BLACK 3.0M
OMNI-SCBK6.0	SIDE CHANNEL BLACK 6.0M
OMNI-SCWT2.5	SIDE CHANNEL WHITE 2.5M
OMNI-SCWT3.0	SIDE CHANNEL WHITE 3.0M
OMNI-SCWT6.0	SIDE CHANNEL WHITE 6.0M

## BOTTOM RAIL



CODE	DESCRIPTION
OMNI-BRMF4.0	OMNI SCREEN BOTTOM RAIL M/F 4.0M
OMNI-BRMF6.0	OMNI SCREEN BOTTOM RAIL M/F 6.0M
OMNI-BRBK4.0	OMNI SCREEN BOTTOM RAIL BLACK 4.0M
OMNI-BRBK6.0	OMNI SCREEN BOTTOM RAIL BLACK 6.0M
OMNI-BRWT4.0	OMNI SCREEN BOTTOM RAIL WHITE 4.0M
OMNI-BRWT6.0	OMNI SCREEN BOTTOM RAIL WHITE 6.0M

## BOTTOM RAIL END CAPS



CODE	DESCRIPTION
OMNI-BRECBP	BOTTOM RAIL END CAP 3MM BLACK PLASTIC

## BOTTOM RAIL SLIDE LOCKS



CODE	DESCRIPTION
OMNI-BRCGPS	THUMB SCREW FOR SLIDE LOCKS - S/S
OMNI-BRCGP	BOTTOM RAIL SLIDE LOCK - S/S

# PELMET & FLASHING

## PELMET FRONT



CODE	DESCRIPTION
OMNI-PELFNF6M	PELMET FRONT M/F 6.0M

## FLASHING



CODE	DESCRIPTION
ZIPE0885	ALUMINIUM FLASHING 135X25 M/F 6.0M
ZIPE0885PB	ALUMINIUM FLASHING 135X25 BLACK 6.0M
ZIPE0885PW	ALUMINIUM FLASHING 135X25 WHITE 6.0M

## PELMET TOP/BACK



CODE	DESCRIPTION
OMNI-PELTBNF6M	PELMET TOP/BACK M/F 6.0M

## PELMET BRACKETS



CODE	DESCRIPTION
OMNI-PELBRKTM/F	PELMET BRACKETS (PAIR M/F)
OMNI-PELBRKTB	PELMET BRACKETS (PAIR BLACK)
OMNI-PELBRKTW	PELMET BRACKETS (PAIR WHITE)

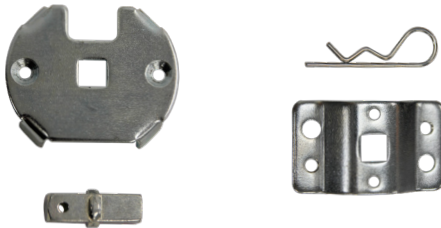
# MOTORISATION

## TUBULAR MOTOR



CODE	DESCRIPTION
WSRE50-50/13	50/13 ALPHA TUBULAR MOTOR
WSRE50-30/17	30/17 ALPHA TUBULAR MOTOR

## ALPHA BLOCK & PIN ADAPTER



CODE	DESCRIPTION
WSA3005	ALPHA BLOCK & PIN ADAPTER

## ALPHA CROWN & DRIVE ADAPTER



CODE	DESCRIPTION
WSA2409	CROWN & DRIVE ADAPTER FOR 78MM TUBE
WSA2408	CROWN & DRIVE ADAPTER FOR 70MM TUBE

## ALPHA PIONEER REMOTE



WSRE101-1



WSRE103-4



WSRE103-8

CODE	DESCRIPTION
WSRE101-1	PIONEER SERIES REMOTE CONTROL 1 CHANNEL
WSRE103-4	PIONEER SERIES REMOTE CONTROL 4 CHANNEL
WSRE103-8	PIONEER SERIES REMOTE CONTROL 8 CHANNEL

## ALPHA NAVIGATOR REMOTE



WSRE301-1



WSRE302-5



WSRE303-16



CODE	DESCRIPTION
WSRE301-1	NAVIGATOR SERIES REMOTE CONTROL 1 CHANNEL
WSRE302-5	NAVIGATOR SERIES REMOTE CONTROL 5 CHANNEL
WSRE303-16	NAVIGATOR SERIES REMOTE CONTROL 16 CHANNEL









## TERMS & CONDITIONS

1. Definitions
  - 1.1 "Seller" shall mean QCD Limited and its successors and assigns.
  - 1.2 "Customer" shall mean the Customer or any person acting on behalf of and with the authority of the Customer.
  - 1.3 "Guarantor" means that person (or persons), or entity that agrees herein to be liable for the debts of the Customer on a principal debtor basis.
  - 1.4 "Goods" shall have the same meaning as in section 119 of the Contract and Commercial Law Act 2017 and are goods supplied by the Seller to the Customer (and where the context so permits shall include any supply of Services as hereinafter defined).
  - 1.5 "Services" shall mean all services supplied by the Seller to the Customer and includes any advice or recommendations (and where the context so permits shall include any supply of Goods as defined above).
  - 1.6 "Price" shall mean the cost of the Goods as agreed between the Seller and the Customer subject to clause 4 of this contract.
2. Acceptance
  - 2.1 Any instructions received by the Seller from the Customer for the supply of Goods and/or the Customer's acceptance of Goods supplied by the Seller shall constitute acceptance of the terms and conditions contained herein.
  - 2.2 Where more than one Customer has entered into this agreement, the Customers shall be jointly and severally liable for all payments of the Price.
  - 2.3 Upon acceptance of these terms and conditions by the Customer the terms and conditions are irrevocable and can only be rescinded in accordance with these terms and conditions or with the written consent of the manager of the Seller.
  - 2.4 None of the Seller's agents or representatives are authorised to make any representations, statements, conditions or agreements not expressed by the manager of the Seller in writing nor is the Seller bound by any such unauthorised statements.
  - 2.5 The parties agree that for the purposes of the Construction Contracts Act 2002 together with any amendments to the Construction Contracts Act 2022 this contract is not a commercial construction contract or a construction contract whether for a commercial or residential property or work and devise liability under this contract shall be in no way limited by any contract that the Customer may have entered into with a third party in relation to the supply of Goods and/or Services to that third party or the payment by the third party to the Customer of any monies whether by progress payments or otherwise.
3. Goods / Services
  - 3.1 The Goods and/or Services are as described on the invoices, quotation, work authorisation or any other work commencement forms as provided by the Seller to the Customer.
  - 3.2 Any credit limit approved by the Seller may be reviewed by the Seller from time to time at its sole discretion. The credit limit may be increased or reduced by the Seller following the review without the need to give notice to the customer for the increase or reduction.
4. Price And Payment
  - 4.1 At the Seller's sole discretion the Price shall be either;
    - (a) as indicated on invoices provided by the Seller to the Customer in respect of Goods supplied; or
    - (b) the Seller's current Price, at the date of delivery of the Goods, according to the Seller's current Price list; or
    - (c) Seller's quoted Price (subject to clause 4.2) which shall be binding upon the Seller provided that the Customer shall accept in writing the Seller's quotation within thirty (30) days.
  - 4.2 The Seller may by giving notice to the Customer (verbally or otherwise) at any time before delivery increase the Price of the Goods to reflect any variation from the plan of scheduled works or specifications beyond the reasonable control of the Seller which increase the cost of the Goods/Services by more than 10% of the quoted Price.
  - 4.3 At the Seller's sole discretion a deposit may be required. The deposit amount or percentage of the Price will be stipulated at the time of the order of the Goods and shall become immediately due and payable.
  - 4.4 Time for payment for the Goods shall be of the essence and will be stated on the invoice, quotation or any other order forms. If no time is stated then payment shall be on delivery of the Goods.
  - 4.5 The Seller may withhold delivery of the Goods until the Customer has paid for them, in which event payment shall be made before the delivery date.
  - 4.6 At the Seller's sole discretion, payment for approved Customer's shall be due on the twentieth (20th) of the month in which a statement is posted to the Customer's address or address for notices.
  - 4.7 At the Seller's sole discretion, for certain approved Customers payment will be due seven (7) days following the date of the invoice.
  - 4.8 Payment will be made by cash on delivery, or by cheque, or by bank cheque, or by direct credit, or by credit card, or by any other method as agreed to between the Customer and the Seller.
  - 4.9 The Price shall be increased by the amount of any GST and other taxes and duties which may be applicable, except to the extent that such taxes are expressly included in any quotation given by the Seller.
  - 4.10 The Seller will charge a 2.5% premium for all payments made by credit card or by contactless credit or debit card payment systems such as "Paywave".
5. Delivery Of Goods
  - 5.1 Delivery of the Goods shall be made to the Customer's address. The Customer shall make all arrangements necessary to take delivery of the Goods whenever they are tendered for delivery.
  - 5.2 The costs of carriage and any insurance which the Customer reasonably directs the Seller to incur, shall be reimbursed by the Customer (without any set-off or other withholding whatever) and shall be due on the date for payment of the Price. The

- carrier shall be deemed to be the Customer's agent.
- 5.3 The Seller may deliver the Goods by separate instalments (in accordance with the agreed delivery schedule). Each separate instalment shall be invoiced and paid for in accordance with the provisions in this contract of sale.
  - 5.4 Delivery of the Goods to a third party nominated by the Customer is deemed to be delivery to the Customer for the purposes of this agreement.
  - 5.5 The Customer shall take delivery of the Goods tendered notwithstanding that the quantity so delivered shall be either greater or less than the quantity purchased provided that:
    - (a) such discrepancy in quantity shall not exceed 5%, and
    - (b) the Price shall be adjusted pro rata to the discrepancy.
  - 5.6 The failure of the Seller to deliver shall not entitle either party to treat this contract as repudiated.
  - 5.7 The Seller shall not be liable for any loss or damage whatever due to failure by the Seller to deliver the Goods (or any of them) promptly or at all.
6. Risk
    - 6.1 If the Seller retains title to the Goods nonetheless all risk for the Goods passes to the Customer on delivery.
    - 6.2 If any of the Goods are damaged or destroyed prior to title to them passing to the Customer, the Seller is entitled, without prejudice to any of its other rights or remedies under these terms and conditions (including the right to receive payment of the balance of the Price for the Goods), to receive all insurance proceeds payable in respect of the Goods. This applies whether or not the Price has become payable under these terms and conditions. The production of these terms and conditions by the Seller is sufficient evidence of the Seller's rights to receive the insurance proceeds without the need for any person dealing with the Seller to make further enquiries.
  7. Defects/Returns
    - 7.1 The Customer shall inspect the Goods on delivery and shall within seven (7) days subject to any mandatory provisions under the Consumer Guarantees Act 1993 of delivery notify the Seller of any alleged defect, shortage in quantity, damage or failure to comply with the description or quote. The Customer shall afford the Seller an opportunity to inspect the Goods within a reasonable time following delivery if the Customer believes the Goods are defective in any way. If the Customer shall fail to comply with these provisions the Goods shall be conclusively presumed to be in accordance with the terms and conditions and free from any defect or damage.
    - 7.2 For defective Goods, which the Seller has agreed in writing that the Customer is entitled to reject, the Seller's liability is limited to either (at the Seller's discretion) replacing the Goods or repairing the Goods provided that:
      - (a) the Customer has complied with the provisions of clause 7.1;
      - (b) the Goods are returned at the Customer's cost within fourteen (14) days of the delivery date;
      - (c) the Seller will not be liable for Goods which have not been stored or used in a proper manner;
      - (d) the Goods are returned in the condition in which they were delivered and with all packaging material, brochures and instruction material in as new condition as is reasonably possible in the circumstances.
    - 7.3 The Seller may (in its discretion) accept the Goods for credit but this may incur a handling fee of 15% of the value of the returned Goods plus any freight or \$100.00 which ever is the greater of.
    - 7.4 Goods returned for credit must be returned within 14 days of purchase, are subject to approval, and incur a restocking fee being the greater of 15% of invoice value or \$100. Custom items manufactured or cut to length are non-refundable. In the event of a claim the seller liability is restricted to the invoice price only. Title of goods supplied shall not pass to the Customer until full payment is received.
  8. Warranty
    - 8.1 For Goods not manufactured by the Seller, the warranty shall be the current warranty provided by the manufacturer of the Goods. The Seller shall not be bound by nor responsible for any term, condition, representation or warranty given by the manufacturer of the Goods.
  9. Default & Consequences Of Default
    - 9.1 Interest on overdue invoices shall accrue from the date when payment becomes due daily until the date of payment at a rate of 2.5% compounding per calendar month and shall accrue at such a rate after as well as before any judgement.
    - 9.2 If the Customer defaults in payment of any invoice when due, the Customer shall indemnify the Seller from and against all of the Seller's costs and disbursements including on a solicitor and own client basis and in addition all of the Seller's nominees costs of collection.
    - 9.3 Without prejudice to any other remedies the Seller may have, if at any time the Customer is in breach of any obligation (including those relating to payment), the Seller may suspend or terminate the supply of Goods to the Customer and any of its other obligations under the terms and conditions. The Seller will not be liable to the Customer for any loss or damage the Customer suffers because the Seller exercised its rights under this clause.
    - 9.4 If any account remains unpaid at the end of the second month after supply of the Goods or Services the following shall apply: An immediate amount of the greater of \$20.00 or 10.00% of the amount overdue shall be levied for administration fees which sum shall become immediately due and payable in addition to the interest payable under clause 9.1 hereof.
    - 9.5 In the event that:
      - (a) any money payable to the Seller becomes overdue, or in the Seller's opinion the Customer will be unable to meet its payments as they fall due; or,
      - (b) the Customer becomes insolvent, convenes a meeting with its creditors or proposes or enters into an arrangement with creditors, or makes an assignment for the benefit of its creditors, or;

- (c) a receiver, manager, liquidator (provisional or otherwise) or similar person is appointed in respect of the Customer or any asset of the Customer, then without prejudice to the Seller's other remedies at law;
- (i) the Seller shall be entitled to cancel all or any part of any order of the Customer which remains unperformed in addition to and without prejudice to any other remedies; and
- (ii) all amounts owing to the Seller shall, whether or not due for payment, immediately become due and payable.

## 10. Title

10.1 It is the intention of the Seller and agreed by the Customer that property in the Goods shall not pass until:

- (a) The Customer has paid all amounts owing for the particular Goods, and
- (b) The Customer has met all other obligations due by the Customer to the Seller in respect of all contracts between the Seller and the Customer, and that the Goods, or proceeds of the sale of the Goods, shall be kept separate until the Seller shall have received payment and all other obligations of the Customer are met.

10.2 Receipt by the Seller of any form of payment other than cash shall not be deemed to be payment until that form of payment has been honoured, cleared or recognised and until then the Seller's ownership of rights in respect of the Goods shall continue.

10.3 It is further agreed that:

- (a) Until such time as ownership of the Goods shall pass from the Seller to the Customer the Seller may give notice in writing to the Customer to return the Goods or any of them to the Seller. Upon such notice the rights of the Customer to obtain ownership or any other interest in the Goods shall cease.
- (b) If the Customer fails to return the Goods to the Seller then the Seller or the Seller's agent may enter upon and into land and premises owned, occupied or used by the Customer, or any premises as the invitee of the Customer, where the Goods are situated and take possession of the Goods, without being responsible for any damage thereby caused.

## 11. Personal Property Securities Act 1999

11.1 Upon assenting to these terms and conditions in writing the Customer acknowledges and agrees that:

- (a) these terms and conditions constitute a security agreement for the purposes of the PPSA; and
- (b) a security interest is taken in all Goods previously supplied by the Seller to the Customer (if any) and all Goods that will be supplied in the future by the Seller to the Customer during the continuance of the parties relationship.

11.2 The Customer undertakes to:

- (a) sign any further documents and/or provide any further information, such information to be complete, accurate and up-to-date in all respects, which the Seller may reasonably require to register a financing statement or financing change statement on the Personal Property Securities Register;
- (b) indemnify, and upon demand reimburse, the Seller for all expenses incurred in registering a financing statement or financing change statement on the Personal Property Securities Register or releasing any Goods charged thereby;
- (c) not register a financing change statement or a change demand without the prior written consent of the Seller;
- (d) give the Seller not less than fourteen (14) days prior written notice of any proposed change in the Customer's name and/or any other change in the Customer's details (including but not limited to, changes in the Customer's address, facsimile number, or business practice); and
- (e) immediately advise the Seller of any material change in its business practices of selling the Goods which would result in a change in the nature of proceeds derived from such sales.

11.3 The Seller and the Customer agree that nothing in sections 114(1)(a), 133 and 134 of the PPSA shall apply to these Terms and Conditions.

11.4 The Customer waives its rights as a debtor under sections 116, 120(2), 121, 125, 126, 127, 129, 131 and 132 of the PPSA.

11.5 Unless otherwise agreed to in writing by the Seller, the Customer waives its right to receive a verification statement in accordance with section 148 of the PPSA.

11.6 The Customer unconditionally ratifies any actions taken by the Seller under clauses 11.1 to 11.5. under and by virtue of the power of attorney given by the Customer to the Seller.

## 12. Security & Charge

12.1 Despite anything to the contrary contained herein or any other rights which the Seller may have howsoever:

- (a) Where the Customer and/or the Guarantor (if any) is the owner of land, realty or any other asset capable of being charged, both the Customer and/or the Guarantor agree to mortgage and/or charge all of their joint and/or several interest in the said land, realty or any other asset to the Seller or the Seller's nominee to secure all amounts and other monetary obligations payable under the terms and conditions. The Customer and/or the Guarantor acknowledge and agree that the Seller (or the Seller's nominee) shall be entitled to lodge where appropriate a caveat, which caveat shall be released once all payments and other monetary obligations payable hereunder have been met.

(b) Should the Seller elect to proceed in any manner in accordance with this clause and/or its sub-clauses, the Customer and/or Guarantor shall indemnify the Seller from and against all the Seller's costs and disbursements including legal costs on a solicitor and own client basis.

(c) To give effect to the provisions of clause [11, 12.1(a) to (b)] inclusive hereof the Customer and/or the Guarantor (if any) do hereby irrevocably nominate constitute and appoint the Seller or the Seller's nominee as the Customer's and/or Guarantor's true and lawful attorney to execute mortgages and charges (whether registrable or not) including such other terms and conditions as the Seller and/or the Seller's nominee shall think fit in his/her/its/their absolute discretion against the

joint and/or several interest of the Customer and/or the Guarantor in any land, realty or asset in favour of the Seller and in the Customer's and/or Guarantor's name as may be necessary to secure the said Customer's and/or Guarantor's obligations and indebtedness to the Seller and further to do and perform all necessary and other acts including instituting any necessary legal proceedings, and further to execute all or any documents in the Seller's absolute discretion which may be necessary or advantageous to give effect to the provisions of this clause.

## 13. Intellectual property

13.1 Where the Seller has designed or drawn Goods for the Customer, then the copyright in those designs and drawings shall remain vested in the Seller, and shall only be used by the Customer at the Seller's discretion.

13.2 The Customer warrants that all designs or instructions to the Seller will not cause the Seller to infringe any patent, registered design or trademark in the execution of the Customer's order.

## 14. Cancellation

14.1 The Seller may cancel these terms and conditions or cancel delivery of Goods and Services at any time before the Goods are delivered by giving written notice. On giving such notice the Seller shall promptly repay to the Customer any sums paid in respect of the Price for those Goods. The Seller shall not be liable for any loss or damage whatsoever arising from such cancellation.

14.2 At the Seller's sole discretion the Customer may cancel delivery of Goods and/or Services. In the event that the Customer cancels delivery of Goods and/or Services the Customer shall be liable for any costs incurred by the Seller up to the time of cancellation.

## 15. Privacy Act 2020

15.1 The Customer and the Guarantor/s (if separate to the Customer) authorises the Seller to:

- (a) collect, retain and use any information about the Customer, for the purpose of assessing the Customer's creditworthiness or marketing products and services; and
- (b) to disclose information about the Customer, whether collected by the Seller from the Customer directly or obtained by the Seller from any other source, to any other credit provider or any credit reporting agency for the purposes of providing or obtaining a credit reference, debt collection or notifying a default by the Customer.

15.2 Where the Customer is a natural person the authorities under clause

15.1 are authorities or consents for the purposes of the Privacy Act 2020.

15.3 The Customer shall have the right to request the Seller for a copy of the information about the Customer retained by the Seller and the right to request the Seller to correct any incorrect information about the Customer held by the Seller.

## 16. Customer's Disclaimer

16.1 The Customer hereby disclaims any right to rescind, or cancel the contract or to sue for damages or to claim restitution arising out of any misrepresentation made to him by any servant or agent of the Seller and the Customer acknowledges that he buys the Goods relying solely upon his own skill and judgement.

## 18. Unpaid Seller's Rights To Dispose Of Goods

18.1 In the event that:

- (a) the Seller retains possession or control of the Goods; and
- (b) payment of the Price is due to the Seller; and
- (c) the Seller has made demand in writing of the Customer for payment of the Price in terms of this contract; and
- (d) the Seller has not received the Price of the Goods,

then, whether the title in the Goods has passed to the Customer or has remained with the Seller, the Seller may dispose of the Goods and may claim from the Customer the loss to the Seller on such disposal.

## 19. Consumer Guarantees Act 1993

19.1 This agreement is subject to the provisions of the Consumer Guarantees Act 1993 in all cases except where the Customer is contracting within the terms of a trade/business (which cases are specifically excluded).

## 20. General

20.1 If any provision of these terms and conditions shall be invalid, void or illegal or unenforceable the validity existence, legality and enforceability of the remaining provisions shall not be affected, prejudiced or impaired.

20.2 All Goods and Services supplied by the Seller are supplied subject to the laws of New Zealand and the Seller takes no responsibility for changes in the law that affect the Goods or Services supplied.

20.3 The Seller shall be under no liability whatsoever to the Customer for any indirect loss and/or expense (including loss of profit) suffered by the Customer arising out of a breach by the Seller of these terms and conditions.

20.4 In the event of any breach of this contract by the Seller the remedies of the Customer shall be limited to damages. Under no circumstances shall the liability of the Seller exceed the Price of the Goods.

20.5 Neither party shall be liable for any default due to any act of God, terrorism, war, strike, lock out, industrial action, flood, storm or other event beyond the reasonable control of either party.

20.6 The Customer shall not set off against the Price amounts due from the Seller.

20.7 The Seller may license or sub-contract all or any part of its rights and obligations without the Customer's consent.

20.8 The Seller reserves the right to review these terms and conditions at any time and from time to time. If, following any such review, there is to be any change in such terms and conditions, that change will take effect from the date on which the Seller notifies the Customer of such change.







qcd.co.nz