



**Specialised  
Fabric  
Solutions**

**PRODUCT  
CATALOGUE  
2024**

**—**

**ACCESSORIES**

# QCD LIMITED

## Specialised Fabric Solutions

**Nature is demanding, so we demand a lot from our textiles.**

Whether providing much-needed shade for a sun-baked terrace or sailing a yacht around the world, you need to know your fabric systems are up to the challenge. QCD has been supplying customers in the commercial, residential and marine markets for over 60 years. With a huge range of specialised textiles and hardware sourced from around the world, our team can help you specify and deliver a solution that works.

The wind, UV rays and ocean spray can do their worst. Relax, because you're covered.

TO PLACE AN ORDER OR FOR  
PRODUCT ENQUIRIES

## CONTACT US

### **North Island**

#### **Office & Warehouse**

373D Neilson Street, Penrose,  
Auckland, 1061  
New Zealand  
09 815 7500  
[\*\*sales@qcd.co.nz\*\*](mailto:sales@qcd.co.nz)

### **South Island**

#### **Office & Warehouse**

24 Disraeli Street, Addington  
Christchurch, 8024  
New Zealand  
03 384 9329  
[\*\*chchsales@qcd.co.nz\*\*](mailto:chchsales@qcd.co.nz)

[\*\*qcd.co.nz\*\*](http://qcd.co.nz)





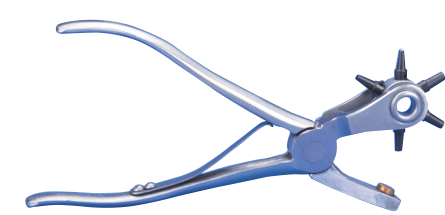


# ACCESSORIES

## CONTENTS

PUNCHES	4
CUTTERS & HAMMERS	5
SHEARS	6
HOT KNIVES	7
CLEANERS, PROTECTANTS & POLISH	8
ADHESIVES	10
CORD	14
EYELETS	16
EYELET MACHINE CHUCKS & DIES	18
GROMMETS	19
STAINLESS STEEL RINGS	20
WEBBING ACCESSORIES	21
METAL FASTENERS	22
DOT FASTENERS	25
T-TOGGLES	26
HOOKS & EQUESTRIAN FITTINGS	27
PLASTIC FASTENERS	28
MARINE ACCESSORIES	31
STAINLESS STEEL BOAT CANOPY FITTINGS	32
POLES	35
TUBE & FRAME ACCESSORIES	36
TUBE BENDERS	37
SHOCK CORD ACCESSORIES	38
WEBBING	40
AWNING ACCESSORIES	43
STAPLES	45
SEWING ACCESSORIES	46

# REVOLVING TUBE PUNCH



## PRODUCT FEATURES

- Industrial quality
- Forged handles with copper anvil
- Revolving hole punch with 6 replaceable drive tubes ranging from 2.4 to 4.8mm/ 3/32 to 3/16 inch

CODE	LENGTH (MM/IN)
HC350	230/9

# REPLACEMENT TUBES & ANVIL FOR REVOLVING TUBE PUNCH



## PRODUCT FEATURES

- Carbon steel replacement tubes and copper anvil for c350 punch (above)

CODE	HOLE DIAMETER (MM/IN)	OVERALL LENGTH (MM/IN)
HC3500	1.9   5/64	0
HC3501	2.4   3/32	1
HC3502	2.8   7/64	2
HC3503	3.2   1/8	3
HC3504	4.0   3/32	4
HC3505	4.4   11/64	5
HC3506	4.8   3/16	6
HC350A	COPPER ANVIL	

# WAD PUNCH



## PRODUCT FEATURES

- Osborne Arch Punches are forged in one piece from the finest special carbon steel in sizes from 2mm to 60mm diameter
- Larger sizes are made with our properly engineered two piece welded construction
- A unique feature of the Osborne Arch Punch is the inside taper which permits the punchings to clear easily through the barrel
- Punches have fully polished barrel and a green enamel finish
- The cutting edge is fully hardened all the way through and properly finished to provide long use, trouble free punching
- There is no other hollow punch that can compare

CODE	HOLE DIAMETER (MM)	WEIGHT EACH (OZ)
HP23	23	1
HP25	25	1-0
HP28	28	1-0
HP31	31	1-6
HP35	35	1-8
HP38	38	2-0
HP42	42	2-12
HP44	44	3-0
HP50	50	3-12

## SIDE HOLE CUTTERS



### PRODUCT FEATURES

- Hardened cutting edge - milled clearing hole
- Polished barrel
- Variety of sizes

CODE	HOLE DIAMETER (MM)	WEIGHT EACH (OZ)
HP03	3	1
HP04	4	1
HP05	5	1
HP06	6	1
HP07	7	1
HP08	8	1
HP09	9	1
HP10	10	1
HP11	11	3
HP12	12	3
HP16	16	4
HP19	19	4

## NYLON MAUL



### PRODUCT FEATURES

- Rawhide mauls are correctly balanced
- The nylon head is compressed between two solid bronze flanges
- Easy to handle, they strike square, deliver controlled dead blows, and are less likely to slip vs some synthetic mauls
- Made in the traditional manner with internal steel rod tanged through an oak handle

CODE	DIAMETER OF HEAD	LENGTH OF HEAD	OVERALL LENGTH	WEIGHT EACH LBS
QCDNM392-2OZ	2 3/4"	1 5/8"	8 3/4"	2
QCDNM392-4OZ	3 5/8"	2 1/4"	10	4
QCDNM392-6OZ	4"	2 1/4"	10 3/4"	6

## RUBBER MALLET



### PRODUCT FEATURES

- Extra heavy white rubber mallet will not mar surface
- Superior quality
- Finest on the market
- Limited bounce
- White hardwood handle

CODE	DIAMETER OF FACE	LENGTH OF HEAD	LENGTH OF HANDLE	WEIGHT EACH
QCDWRM396-2	2"	3 1/4"	12"	13OZ
QCDWRM396-3	2 1/2"	4 1/2"	14"	28OZ



# HEAVY DUTY SHEARS

WISS



## PRODUCT FEATURES

- Polished blades
- WISS made in the USA since 1848

CODE	WISS #	LENGTH (MM/IN)
HC552-10	20	254/10
HC552-12	22	305/12
HC552L-10	20 LEFT HAND	254/10

# EXTRA HEAVY DUTY SHEARS

WISS



## PRODUCT FEATURES

- Polished blades
- WISS made in the USA since 1848

CODE	WISS #	LENGTH (MM/IN)
HC555-10	20W	254/10
HC555-12	22W	305/12

# THREAD SNIPS

WISS



## PRODUCT FEATURES

- Self-opening spring action snips

CODE	DESCRIPTION
HC553	SELF OPENING SPRING 121   4¾ IN

# CUTTING PAD

- Made of a special formula resilient vinyl plastic, these tough cutting pads are ideal for use with punches



CODE	LENGTH (MM/IN)
QCDCP	230/9

# ENGEL HOT KNIFE

## PRODUCT FEATURES

- Designed to cut and seal synthetics, woven and knit fabrics, and cut and weld rope, cord and webbing
- Quick heating with built in spot lights
- Combine with optional blades for a variety of uses
- Engel hot knife is sold without blades - see right for order details
- Offered in two voltage styles for North American or worldwide use

**CAUTION:** Engel Hot Knife is designed for intermittent operation and should not be used for more than 20 minutes at one time without pause.



CODE	DESCRIPTION	OVERALL LENGTH (MM/IN)	HEATS TO	VOLT	WATT
HC850	HSGO-EURO	254/10	1000°F	220	60

# BENCH MOUNT HOT KNIFE

## PRODUCT FEATURES

- Unit comes with base and one 4 inch cutting blade
- Great for quick, clean cuts of rope or webbing

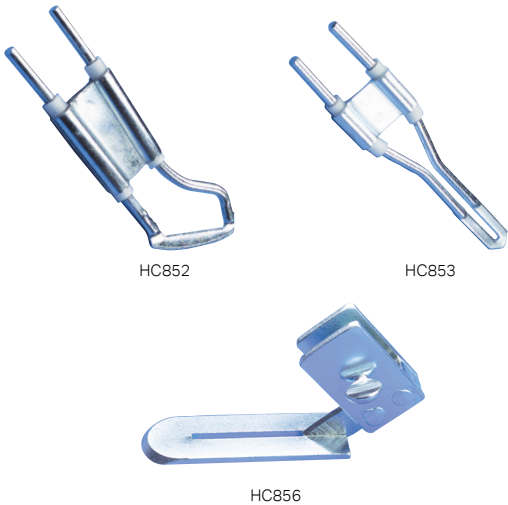


CODE	VOLT	HEATS TO
RC2303-C	240	1200°F

# ENGEL CUTTING ATTACHMENTS

## PRODUCT FEATURES

- Combine blades with trigger action handle to produce hot tool
- HC852 - use with C856 cutting foot
- HC853 - excellent for appliqué work, cut and seal synthetics
- HC856 - use HC852 blade. Does not require cutting surface



CODE	DESCRIPTION
HC852	STANDARD BLADE
HC853	PRECISION BLADE
HC856	CUTTING FOOT

## 303 AEROSPACE PROTECTANT

CODE	DESCRIPTION	LIQUID MEASURE (ML/FLOZ)	CASE QTY
303AP16OZ	TRIGGER SPRAY	473/16	12
303AP32OZ	TRIGGER SPRAY	946/32	12



### PRODUCT FEATURES

- 303 is excellent for preventative maintenance, with a UV screen that reduces fading and degradation due to ozone, acid rain and weather
- Non-hazardous and biodegradable, no petrochemicals
- Not oily or greasy - will not attract dust
- Use on rubber, plastic, fibreglass, plexiglass, vinyl, leather, canvas and woven polyester fabrics
- **Application:** Spray on. Wipe dry. Apply once or twice a year. Apply more often where UV exposure is extreme and constant. 236ml/8floz should cover approximately 13m2/140 square feet

## 303 HIGH TECH FABRIC GUARD

CODE	DESCRIPTION	LIQUID MEASURE (ML/FLOZ)	CASE QTY
303FG16OZ	TRIGGER SPRAY	473/16	12
303FG32OZ	TRIGGER SPRAY	946/32	12



### PRODUCT FEATURES

- 303 is powerful enough to protect fabrics in the harshest environments outdoors, yet is safe for the finest fabrics, wool, silk and fine leathers
- Superior performance, coverage and durability
- Soil and stain resistance, to store and maintain water repellence on outdoor fabrics and UV screening
- Protects against both water and oil based stains. Treated fabrics take longer to soil and clean-up more easily

## NOVUS PLASTIC POLISH

CODE	DESCRIPTION	LIQUID MEASURE (ML/FLOZ)	CASE QTY
HM171	NOVUS#1	59/2	12
HM172	NOVUS#2	59/2	12
HM173	NOVUS#3	59/2	12
HM181	NOVUS#1	236/8	12
HM182	NOVUS#2	236/8	12



### PRODUCT FEATURES

- Novus system provides everything to clean, shine and protect
- Novus 1 gently cleans plastic without scratching. Leaves shines that resist fogging, repels dust and eliminates static. Contains no abrasives
- Novus 2 removes fine scratches and haziness, helps restore faded and discoloured plastics
- Novus 3 removes heavy scratches and abrasion from most acrylic surfaces. Use when damage is too severe for No.2 polish
- Use on Lexan, Plexiglass, clear vinyl, monofilm, polycarbonate, etc
- Coverage: 40-75 sq. ft (3.7-7 sq. m) per 16fl.oz (473ml) depending on material and application method



## VUPLEX PLASTIC CLEANER

CODE	LIQUID MEASURE ML	CASE QTY
VUPLEX200	200	12
VUPLEX375	375	12



### PRODUCT FEATURES

- VuPlex is a simple and effective product to clean, polish, remove static and make fine scratches less visible on clear and coloured plastics
- It extends the life of plastic by sealing the porous surfaces creating a micro layer of protection
- VuPlex is what we recommend to clean and maintain clear Ziptrak® screens

## SEAM KOTE 4

CODE	LIQUID MEASURE ML	CASE QTY
HM150	3.6L	4



### PRODUCT FEATURES

- Waterborne urethane coating which exhibits excellent durability, flexibility & washability
- Lightfast & UV resistant
- Does not prevent mould & mildew
- Good adhesion to a variety of substrates
- Contains no aromatic solvents

## ADOS F2 MULTIPURPOSE SPRAY ADHESIVE

CODE	LIQUID MEASURE ML	CASE QTY
GLUF2SPRAY	575ML	12



### PRODUCT FEATURES

- A high-performance general-purpose contact adhesive. It is water resistant and flexible and its high bond strength makes it ideal for a wide range of uses
- Easily applied, highly versatile, durable and bonds instantly to most substrates

## WATERPROOFER

CODE	DESCRIPTION	LIQUID MEASURE	CASE QTY
WP1L	WATERPROOFER 1L	1L	12
WP2L	WATERPROOFER 2L	2L	6
WP5L	WATERPROOFER 5L	5L	4
WP20L	WATERPROOFER 20L	20L	N/A



### PRODUCT FEATURES

- A water-based product for re-waterproofing canvas and poly-cotton goods
- Make sure the surface to be re-sealed is clean and free of mildew, clean without soap or chemicals

# BOSTIK NO.2 SOLVENT



## PRODUCT OVERVIEW

Strong solvent used to thin most contact adhesives, clean brushes or washout spray equipment.

## RECOMMENDED USES

- Thinner where recommended
- Clean paint brushes and spray equipment
- Reactivate neoprene contact adhesives

CODE	DESCRIPTION	LIQUID MEASURE	CASE QTY
BOS#2SOL1L	NO.2 SOLVENT 1L	1L	12
BOS#2SOL4L	NO.2 SOLVENT 4L	4L	12

# BOSTIK NO.4 SOLVENT



## PRODUCT OVERVIEW

Strong solvent used mainly to thin or reactivate urethane or nitrile based adhesives. Can be used to remove dried adhesives from a variety of surfaces.

## RECOMMENDED USES

- Thinner where recommended
- Adhesive removal from a variety of surfaces
- Reactivate urethane and nitrile based adhesives
- PVC cleaner prior to cementing

CODE	DESCRIPTION	LIQUID MEASURE	CASE QTY
BOS#4SOL1L	NO.4 SOLVENT 1L	1L	12
BOS#4SOL4L	NO.4 SOLVENT 4L	4L	12
BOS#4SOL20L	NO.4 SOLVENT 20L	20L	12

# BOSTIK 1181 BRUSHABLE



Solvent based Neoprene adhesive for excellent durability, will not stain light coloured cotton-backed PVC fabrics. Quick drying with long tack life for ease of use. Softer bond line for flexible substrates with very good heat and water resistance. Intermittent oil and petrol exposure. Available in a natural colour.

**For Thinning:** Solvent No. 2  
**For Cleaning:** Solvent No. 2 or Turps

- For fabric and textiles where high durability, heat and water resistance are required
- Bonding of carpet and lining fabrics, leather, furniture foam and highly loaded fabric joints such as lifting straps
- Motor and marine trim work
- General assembly of wood, laminates, rubbers, cementitious materials, fibreglass and common metals such as aluminium and zinc coated surfaces
- Suitable for light duty bonding of plasticised PVC
- Not suitable for: Polyethylene, Polypropylene, Teflon, Plasticized PVC except for low stress bonds, Copper/brass and Polystyrene foam

CODE	DESCRIPTION	LIQUID MEASURE	CASE QTY
BOS11811L	1181 BRUSHABLE 1L	1L	12

## BOSTIK 2405 BOSCOPRENE PART A



Neoprene blend contact adhesive. Good chemical resistance to acids and alkali. Gives greater heat resistance and stronger bond with Desmodur RFE. Resistant to oil, petrol and kerosene. Not resistant to esters, ketones, aromatic and chlorinated hydrocarbons. Good water resistance. High bond strength with good heat and humidity resistance. Flexible and available in Natural colour.

**For Thinning:** Solvent No. 2

**For Cleaning:** Solvent No. 2 or Turps

- Rubberised (including Hypalon) canvas on rescue and pleasure craft
- Natural and synthetic rubber
- Some rigid PVC's - The adhesive will deteriorate if subjected to high temperatures and/or humidity on a continuous basis
- Rubber to metal (with Primer 17)
- Rubber to wood
- Not suitable for: Polyethylene, Polypropylene, Teflon, Plasticised PVC - except for low stress bonds, Copper/brass and Polystyrene foam

CODE	DESCRIPTION	LIQUID MEASURE	CASE QTY
BOS24024L	2405 BOSCOPRENE PART 1	4L	12

## BOSTIK TRIPLE 5 BSR



High performance Neoprene based laminating adhesive. It can be applied by brush, spray or roller. Versatile for bonding most common substrates. Can be heat reactivated. Good heat and water resistance. Intermittent oil and petrol exposure.

**For Thinning:** Solvent No. 2

**For Cleaning:** Solvent No. 2 or Turps

- Bonding decorative laminates such as Formica, Laminex etc. to particle board
- Bench top laminating
- General bonding for plywood, galvanised iron, wood veneer, plasterboard
- Most general laminating requirements
- Not suitable for: Polyethylene, Polypropylene, Teflon, Plasticised PVC except for low stress bonds, Copper/brass and Polystyrene foam

CODE	DESCRIPTION	LIQUID MEASURE	CASE QTY
BOS55520L	TRIPLE 5 BSR	20L	12



BOSTIK ULTRAGRIP 777

BOSTIK UNIGRIP 999



Polyurethane clear tough contact adhesive. Room temperature tack, colourless non-yellowing bond line, high heat resistance, excellent storage stability, superior bond to polyurethane and PVC and plasticiser resistant. Broad range of possible substrates. Modifiable with Desmodur RFE for greater heat resistance.

**For Thinning:** Solvent No. 4  
**For Cleaning:** Solvent No. 4

- Common shoe industry materials
- Laminating operations
- Soft furnishings
- Automotive
- PVC inflatable boats\*
- PVC truck sidings\*
- PVC inflatable goods\*
- PVC bonding where high moisture resistance is required\*
- Not suitable for: Polyethylene, polypropylene, Teflon and Polystyrene foam

\*2 part system required

CODE	DESCRIPTION	LIQUID MEASURE	CASE QTY
BOS7771L	ULTRAGRIP 777	1L	12



Polyurethane heat resistant high strength PVC adhesive with excellent creep resistance. Very good plasticizer resistance, low staining, excellent UV resistance and good brushability. Heat-reactivated and Desmodur RFE modifiable Use as 1 part or 2 part depending on performance requirements. Available in clear colour.

**For Thinning:** Solvent No. 4  
**For Cleaning:** Solvent No. 4

- Common shoe industry materials
- PVC inflatable boats\*
- PVC truck sidings\*
- PVC inflatable goods\*
- PVC bonding where high moisture resistance is required\*
- Not suitable for: Polyethylene, Polypropylene, Teflon and Polystyrene foam

\*2 part adhesive system required

CODE	DESCRIPTION	LIQUID MEASURE	CASE QTY
BOS9991L	UNIGRIP 999 1L	1L	12
BOS9994L	UNIGRIP 999 4L	4L	
BOS99920L	UNIGRIP 999 20L	20L	

## BOSTIK DESMODUR RFE SEAM SEALER



Adding isocyanates gives the adhesive bonds much higher heat, solvent and water resistance compared to the adhesive without crosslinker added. The adhesion to all substrates is dramatically improved, especially in the case of Bostik 2402 adhesive to rubber and metal. In the case of Bostik's Polyurethane adhesives such as Unigrip 999 and Ultragrip 777 there is a much-increased water and heat resistance.

Some adhesives such as Bostik's 1649 & 2404 contact adhesives must use crosslinking agents; they are part of the adhesive system.

Nitrile adhesives such as Clear Bond also benefit greatly from the addition of isocyanates. The heat resistance and adhesion is boosted.

CODE	DESCRIPTION	LIQUID MEASURE	CASE QTY
BOSDRFE50	DESMODUR RFE 50ML	50ML	12
BOSDRFE750	DESMODUR RFE 750ML	750ML	N/A



Iosso seam sealer prevents most seams from leaking. Best for use on cotton, cotton blends, polyester and synthetic woven fabrics. Water repellency will vary with vinyl coated and vinyl laminated fabrics due to seam construction. It will not change the look or feel of the fabric; ideal for boat covers, awnings, tents, backpacks etc.

CODE	DESCRIPTION	LIQUID MEASURE	CASE QTY
M216	SEAM SEALER	118ML	12

## SEWING MACHINE OIL



HC063 Oil Bottle

Purchase oil bottle with this product for super easy application.

CODE	DESCRIPTION	LIQUID MEASURE	CASE QTY
M321	SEWING MACHINE OIL	1L	12

# ROPE - DANILINE 3 STRAND PPE

## PRODUCT FEATURES

- Made in New Zealand, Duradan PPE rope is made from blending Polypropylene and Polyethylene resins
- Floats on water
- Is UV stabilised for New Zealand's extreme UV conditions
- Available in 3mm - 48mm on 110m and 220m reels



CODE	SIZE/COLOUR	BREAKING LOAD (KG)	ROLL IN METERS
R5PPE	5MM WHITE	465	220
R5PPEGRN	5MM GREEN	465	220
R6PPE	6MM WHITE	727	220
R6PPEB	6MM BLACK	727	220
R6PPEY	6MM YELLOW	727	220
R7PPE	7MM WHITE	945	220
R7PPEB	7MM BLACK	945	220
R8PPE	8MM WHITE	1236	220
R8PPEB	8MM BLACK	1236	220
R10PPE	10MM WHITE	1908	220
R10PPEB	10MM BLACK	1908	220
R12PPE	12MM WHITE	2654	220

# LUFF CORD HARD LAY

## PRODUCT FEATURES

- Tightly picked 100% polyester braid, extremely rigid for use in sail making luffcord



CODE	SIZE	SPOOL	WEIGHT/100MTS (KG)
CJ632HL	3,2MM	500M	0.76
CJ640HL	4MM	300M	1.21
CJ648HL	4.8MM	300M	1.73
CJ660HL	6.0MM	300M	2.65
CJ664HL	6.4MM	300M	2.98

# 5 SERIES POLYESTER COURSE BRAID

## PRODUCT FEATURES

- 8 Plait construction, high tenacity UV stabilised polyester core and cover
- Solid white, black
- Applications - General purpose, tying and whipping, Lacing cord, Blind drawing cord, mouse line, leech line



CODE	SIZE	COLOUR	SPOOL	APPROX B/LOAD (KG)	WEIGHT/ 100MTS (KG)
CJ15W	1.5MM	WHITE	100/1000M	50	0.16
CJ20W	2MM	WHITE	100/1000M	100	0.27
CJ20B	2MM	BLACK	100/1000M	100	0.27
CJ25W	2.5MM	WHITE	100/1000M	130	0.42
CJ25B	2.5MM	BLACK	100/1000M	130	0.42
CJ30W	3MM	WHITE	100/300M	200	0.60
CJ30B	3MM	BLACK	100/300M	200	0.60
CJ35W	3.5MM	WHITE	100/500M	350	0.81
CJ35B	3.5MM	BLACK	100/500M	350	0.81
CJ40W	4MM	WHITE	100/300M	390	1.13
CJ40B	4MM	BLACK	100/300M	390	1.13
CJ45W	4.5MM	WHITE	100/400M	425	1.28
CJ45B	4.5MM	BLACK	100/400M	425	1.28
CJ50W	5MM	WHITE	100/300M	565	1.57
CJ50B	5MM	BLACK	100/300M	565	1.57
CJ60B	6MM	BLACK	100/200M	600	2.36



# 6 SERIES POLYESTER SMOOTH BRAID

## PRODUCT FEATURES

- 16 Carrier smooth construction, high tenacity UV stabilised polyester core and cover
- Solid white, black
- Applications - General purpose, tying and whipping, mouse line, blind draw cord, leech line

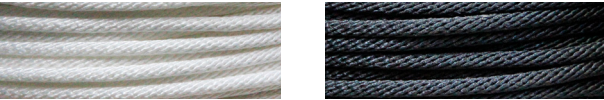


CODE	SIZE	COLOUR	SPOOL	APPROX B/LOAD (KG)	WEIGHT/ 100MTS (KG)
CJ610W	1.0MM	WHITE	100/1000M	25	0.16
CJ615B	1.5MM	BLACK	100/1000M	50	0.27
CJ615W	1.5MM	WHITE	100/1000M	50	0.27
CJ620B	2MM	BLACK	100/1000M	75	0.36
CJ620W	2MM	WHITE	100/1000M	75	0.36
CJ625B	2.5MM	BLACK	100/1000M	200	0.49
CJ625W	2.5MM	WHITE	100/1000M	200	0.49
CJ630B	3MM	BLACK	100/1000M	240	0.63
CJ630W	3MM	WHITE	100/1000M	240	0.63
CJ635B	3.5MM	BLACK	100/500M	275	0.80
CJ635W	3.5MM	WHITE	100/500M	275	0.80
CJ640B	4MM	BLACK	100/300M	400	1.34
CJ640W	4MM	WHITE	100/300M	400	1.34
CJ645B	4.5MM	BLACK	100/300M	425	1.41
CJ645W	4.5MM	WHITE	100/300M	425	1.41
CJ650B	5MM	BLACK	100/300M	520	1.83
CJ650W	5MM	WHITE	100/300M	520	1.83
CJ660B	6MM	BLACK	100/200M	650	2.40
CJ660W	6MM	WHITE	100/200M	650	2.40

# SASH CORD

## PRODUCT FEATURES

- Solid braid construction high tenacity UV polyester, excellent general purpose braid available in solid black and white
- Not suitable for high loads, although excellent for Sash Windows
- Applications - Window sash cord, motor starter cord



CODE	PRODUCT	SIZE	COLOUR	SPOOL	WEIGHT/ 100MTS (KG)
SASH3HL	NO.3	3MM	WHITE	150M	0.57
SASH35	NO.4	3.5MM	WHITE	150M	0.72
SASH35BK	NO.4	3.5MM	BLACK	150M	0.72
SASH4	NO.5	4MM	WHITE	150M	1.20
SASH4BK	NO.5	4MM	BLACK	150M	1.20
SASH6	NO.6	6MM	WHITE	150M	2.50
SASH6BK	NO.6	6MM	BLACK	150M	2.50
SASH8	NO.7	6.4MM	WHITE	150M	2.84
SASH8PKBK	NO.7	6.4	BLACK	150M	2.84

# BRASS SELF PIERCING EYELETS

EYELET



CODE	SIZE	IN BOXES OF
SP1EB	SP1	1,000
SP3EB	SP3	1,000
SP4EB	SP4	1,000
SP6EB	SP6	500
SP7EB	SP7	500
SP9EB	SP9	200

SPUR WASHERS



CODE	SIZE	IN BOXES OF
TG3WB	SP3	1,000
TG4WB	SP4	1,000
TG6WB	SP6	500
TG7WB	SP7	500
TG9WB	SP9	200

PLAIN (FLAT) WASHERS



CODE	SIZE	IN BOXES OF
SP1FWB	SP1	1,000
SP3FWB	SP3	1,000
SP4FWB	SP4	1,000
SP6FWB	SP6	500
SP7FWB	SP7	500
SP9FWB	SP9	200



# NICKEL PLATED SELF PIERCING EYELETS

EYELET



CODE	SIZE	IN BOXES OF
SP0EN	SP0	1,000
SP1EN	SP1	2,500
SP3EN	SP3	1,000
SP4EN	SP4	1,000
SP6EN	SP6	500
SP7EN	SP7	500
SP9EN	SP9	200

SPUR WASHERS



CODE	SIZE	IN BOXES OF
TG3WN	SP3	1,000
TG4WN	SP4	1,000
TG6WN	SP6	500
TG7WN	SP7	500
TG9WN	SP9	200

PLAIN (FLAT) WASHERS



CODE	SIZE	IN BOXES OF
SP0FWN	SP0	1,000
SP1FWN	SP1	2,500
SP3FWN	SP3	1,000
SP4FWN	SP4	1,000
SP6FWN	SP6	500
SP7FWN	SP7	500
SP9FWN	SP9	200



STAINLESS STEEL SELF  
PIERCING EYELETS

EYELET



CODE	SIZE	IN BOXES OF	GRADE
SP3SSE	SP3	1,000	316
SP4SSE-304	SP4	1,000	304
SP6SSE-304	SP6	500	304
SP7SSE-304	SP7	500	304
SP9SSE	SP9	200	316

SPUR WASHERS

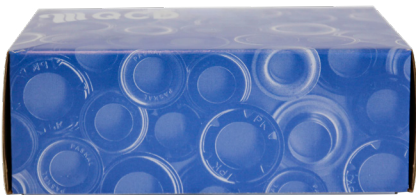


CODE	SIZE	IN BOXES OF	GRADE
TG4SS-304	SP4	1,000	304
TG6SS-304	SP6	500	304
TG7SS-304	SP7	500	304
TG9SS	SP9	200	316

PLAIN (FLAT) WASHERS



CODE	SIZE	IN BOXES OF	GRADE
SP3SS	SP3	1,000	316
SP4SS-304	SP4	1,000	304
SP6SS-304	SP6	500	304
SP7SS-304	SP7	500	304
SP9SS	SP9	200	316



BLACK STAINLESS  
STEEL SELF PIERCING  
EYELETS

EYELET

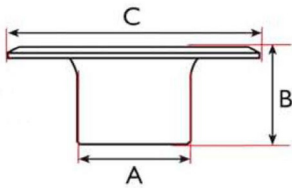


CODE	SIZE	IN BOXES OF	GRADE
SP4SSEB	SP4	1,000	316
SP7SSEB	SP7	1,000	316

PLAIN (FLAT) WASHERS



CODE	SIZE	IN BOXES OF	GRADE
SP4SSB	SP4	1,000	316
SP7SSB	SP7	1,000	316



SELF PIERCING EYELET DIMENSIONS

CODE	A INTERNAL DIAMETER AFTER FITTING	B BARREL LENGTH	C EXTERNAL DIAMETER
SP0	4.8MM	5.2MM	9.6MM
SP1	6.5MM	4.8MM	12.8MM
SP3	8.0MM	5.6MM	19.1MM
SP4	9.5MM	6.6MM	20.6MM
SP6	11.1MM	6.8MM	21.8MM
SP7	12.7MM	7.4MM	26.5MM
SP9	15.6MM	8.4MM	31.8MM
SP20	42MM	12.1MM	63.5MM

# EYELET HAND PRESS



Increase productivity with this light-weight design that allows for portable operation.

- Single mould dye cast head
- Extended handle for maximum leverage
- Suitable for up to SP9 Stainless Steel eyelets
- Can be bolted to a bench (recommended for maximum use)
- Quick and easy to use
- Designed for Self Piercing Eyelets and Durables

CODE	DESCRIPTION
HANDPRESS	EYELET HAND PRESS

# EYELET KICK PRESS



- This tool is for those who want something a little more industrial than a hand press
- This industrial grade press machine is made of solid cast iron
- Supplied in flat pack kit form
- The position of the die can be easily adjusted for use with fabrics of various thickness
- All instructions and tools supplied
- Screw on shaft included

CODE	DESCRIPTION
KICKPRESS	EYELET KICK PRESS

## STIMPSON SPUR-TOOTHED GROMMETS

NICKEL PLATED FINISH



- The higher strength of these spur-toothed grommets derives from their thicker metal gauge and flange closing
- Available only in full packs of 144 = 1 gross

CODE	SIZE	SET HOLE DIAMETER (MM/IN)	PACK QUANTITY
HD003NS	0	6.4   1/4	144
HD004NS	1	9.5   3/8	144
HD005NS	2	10.3   13/32	144
HD006NS	3	11.1   7/16	144
HD007NS	4	14.2   9/16	144
HD008NS	5	15.0   19/32	144
HD009NS	6	17.4   11/16	144

## ENGLISH GROMMETS SET

NICKEL PLATED FINISH



- Low cost, roll-rim, spur toothed grommets suitable for a wide range of applications in sailmaking and cover work

CODE	SIZE	SET HOLE DIAMETER	PACK QTY	HOLE PUNCH	CLOSING TOOL	HOLE PUNCH DIAMETER
HD001NH	000	5.1MM   201/1000"	200	HP6/HP7	HC301	6.3MM
HD002NH	00	6.4MM   1/4"	1000	HP8	HC302	7.9MM

## SPUR GROMMET SETS

LOW COST



CODE	SIZE	SET HOLE DIAMETER (MM/IN)	PACK QTY
HC303O	0	6.4   1/4	144
HC304O	1	9.5   3/8	144
HC305O	2	10.3   13/32	144
HC306O	3	11.1   7/16	144
HC307O	4	14.2   9/16	144
HC308O	5	15.0   19/32	144
HC309O	6	17.4   11/16	144

## CLOSING TOOLS FOR STIMPSON GROMMETS



- Stimpson Grommets cannot be used with English Grommet tools
- Stimpson tools are machined steel case hardened dies
- Low-cost tools are drop forged steel dies

CODE	LOW COST PART NO	SIZE
HC303S	HC303O	0
HC304S	HC304O	1
HC305S	HC305O	2
HC306S	HC306O	3
HC307S	HC307O	4
HC308S	HC308O	5
HC309S	HC309O	6

## ROUND RINGS

### STAINLESS STEEL WELDED HARDWARE

All QCD welded stainless steel fittings are manufactured from high grade stainless steel, which is chemically cleaned and passivated after welding to reduce the risk of staining. TIG welding maximises strength.

- High grade stainless steel
- TIG welded
- Small diameter rings with the same size bar diameter will deform at a higher load although both will have similar tensile strength



CODE	DESCRIPTION	BAR DIAMETER
QCD1503	RND RING WELDED 316S/S 15 X 3MM	3MM
QCD2003	RND RING WELDED 316S/S 20 X 3MM	3MM
QCD2004	RND RING WELDED 316S/S 20 X 4MM	4MM
QCD2005	RND RING WELDED 316S/S 20 X 5MM	5MM
QCD2505	RND RING WELDED 316S/S 25 X 5MM	5MM
QCD2506	RND RING WELDED 316S/S 25 X 6MM	6MM
QCD2806	RND RING WELDED 316S/S 28 X 6MM	6MM
QCD3005	RND RING WELDED 316S/S 30 X 5MM	5MM
QCD3006	RND RING WELDED 316S/S 30 X 6MM	6MM
QCD3008	RND RING WELDED 316S/S 30 X 8MM	8MM
QCD3806	RND RING WELDED 316S/S 38 X 6MM	6MM
QCD3808	RND RING WELDED 316S/S 38 X 8MM	8MM
QCD4510	RND RING WELDED 316S/S 45 X 10MM	10MM
QCD5008	RND RING WELDED 316S/S 50 X 8MM	8MM
QCD5010	RND RING WELDED 316S/S 50 X 10MM	10MM
QCD5012	RND RING WELDED 316S/S 50 X 12MM	12MM

## “D” RINGS

- High grade stainless steel
- TIG welded



CODE	DESCRIPTION	BAR DIAMETER
QCDDR2504	D RING WELDED 316S/S 25 X 4MM	4MM
QCDDR2505	D RING WELDED 304S/S 25 X 5MM	5MM
QCDDR3806	D RING WELDED 304S/S 38 X 6MM	6MM
QCDDR5005	D RING WELDED 316S/S 50 X 5MM	5MM
QCDDR5006	D RING WELDED 316S/S 50 X 6MM	6MM
QCDDR50065	D RING WELDED 316S/S 50 X 6.5MM	6.5MM
QCDDR5008	D RING WELDED 316S/S 50 X 8MM	8MM

## TRI RING WELDED



CODE	DESCRIPTION
QCDTR4006	TRI RING WELDED 316S/S 40MM X 6MM
QCDTR4406	TRI RING WELDED 316S/S 44 X 36 X 6MM
QCDTR5006	TRI RING WELDED 316S/S 50MM X 6MM
QCDTR5008	TRI RING WELDED 316S/S 50MM X 8MM



## SNAP HOOK - WEBBING

- G200N/S has rectangular eye for webbing



CODE	MATERIAL	LENGTH (MM/IN)	INSIDE EYE (MM/IN)	PACK QTY
G200N	NICKEL PLATED BRASS	50/2	25/1	100
G200S	STAINLESS STEEL	50/2	25/1	100
B617S	STAINLESS STEEL	50/2	25/1	100

## SLIDING BAR BUCKLES



CODE	FOR WEBBING (MM/IN)	MATERIAL	PACK QTY
G221	25/1	STAINLESS STEEL/NYLON	10
G221S	25/1	STAINLESS STEEL	10
G222	50/2	STAINLESS STEEL/NYLON	10
G222S	50/2	STAINLESS STEEL	10

## ADJUSTER BUCKLES



CODE	FOR WEBBING (MM/IN)	MATERIAL	PACK QTY
G210N	25/1	NICKEL PLATED BRASS	100
G210S	25/1	STAINLESS STEEL	10
A122BK	50/2	PLASTIC	10

## TENAX FASTENERS

- Used on superior quality boats and cars
- Positive lock



CODE	DESCRIPTION	PACK QTY
G165	STANDARD PULL TOP WITH LOCK WASHER	10
G166	CLOTH BASE STUD WITH LOCK WASHER	10
G167	WOOD SCREW STUD	10
G167S	STUD - SELF TAP	10
G168	2 SCREW STUD	10
G165TOOL	TOOL FOR LOCATING RING	1
G164	#15 MACHINE SCREW	10

## ROPE SPLICE CLIP



Rope Splice Clips are used to join rope to form loops & prevent fraying on rope ends. Simply lay the two rope pieces, so they are side by side, inside the splice clip and close firmly.

CODE	DESCRIPTION	SIZE
QCDRSC6	ROPE SPLICE CLIP	6MM
QCDRSC8	ROPE SPLICE CLIP	8MM
QCDRSC10	ROPE SPLICE CLIP	10MM

# DURABLES



- Custom designed logo can be added to Durable Caps
- Minimum quantity is 30,000 pieces
- Price is on application and there is an initial design cost for the logo
- Cap width - 15mm

EXTRA LONG CAP



LONG CAP



MEDIUM CAP



REGULAR CAP



SOCKET



CARPET FASTENER

STUD



GYPSY STUD



WINDSHIELD CLIP

PLASTIC WASHERS



REGULAR POST



LONG POST

DURABLES CAPS



CODE	DESCRIPTION	COLOUR	POST LENGTH
CAPSS	CAP REGULAR	STAINLESS STEEL	7.3MM
CAPSSMED	CAP MEDIUM	STAINLESS STEEL	8.7MM
CAPSSLP	CAP LONG	STAINLESS STEEL	9.2MM

DURABLES EYELETS



CODE	DESCRIPTION	COLOUR	POST LENGTH
EYELETSS	EYELET REGULAR	STAINLESS STEEL	7.5MM
EYELETSSLP	EYELET LONG	STAINLESS STEEL	8.5MM

DURABLES SOCKETS



CODE	DESCRIPTION	COLOUR	SPRING DIAMETER
SOCKETSS	MEDIUM ACTION	STAINLESS	9.5MM
	SOCKET	STEEL	
SOCKETSSSEASY	EASY ACTION	STAINLESS	9.65MM
	SOCKET	STEEL	
SOCKETSSSTIF	STIFF ACTION	STAINLESS	9.4MM
	SOCKET	STEEL	

DURABLES HAND DIES



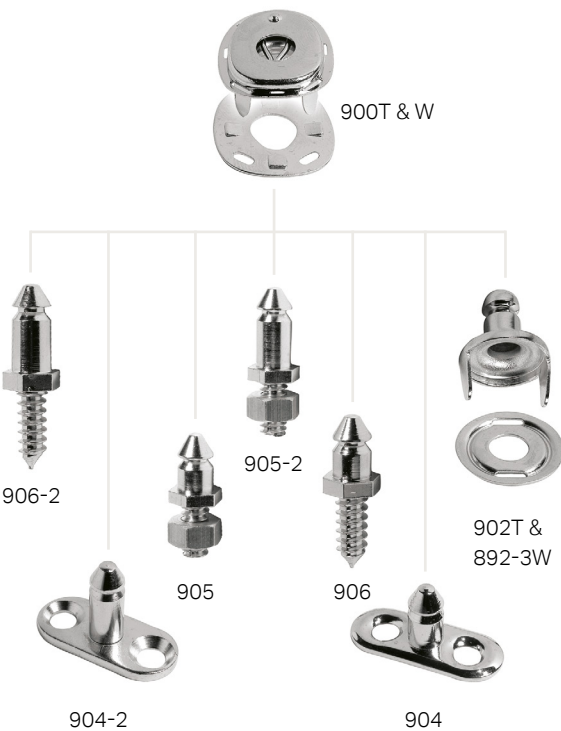
CODE	DESCRIPTION
DDHC	CAP BASE
DDHP	POST BASE
DDHS/ST	STUD/SOCKET PUNCH

DURABLES STUDS



CODE	DESCRIPTION	COLOUR	SCREW LENGTH
STUDSS	REGULAR STUD	STAINLESS STEEL	N/A
STUDSSCS	SCREW STUD	STAINLESS STEEL	10MM
STUDSSCS16	SCREW STUD	STAINLESS STEEL	16MM

SUPER SPOT FASTENERS



TURN BUTTON FASTENERS



TOMAX FASTENERS

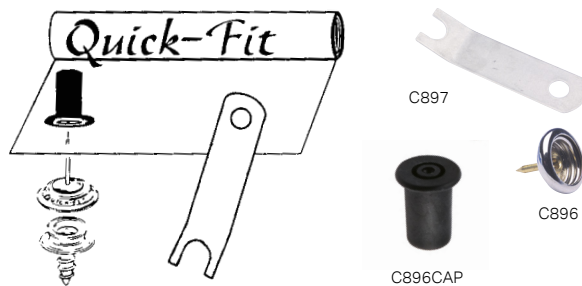
The TOMAX closure is a highly engineered, self-locking snap fastener that cannot come undone once engaged, yet it releases instantly by simply pulling upon the head of the button component.

Manufactured from brass and nickel plated, the TOMAX product range is often seen in use on a number of British automotive applications, but because of the uniqueness of the TOMAX system it is an ideal choice for marine upholstery.



## QUICK-FIT CANVAS TOOLS

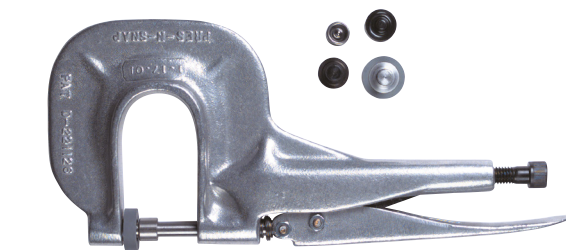
- Quick-fit holding tools snap onto existing studs and provide a quick and easy way to hold material while fitting boat covers
- Plastic holding cap fits onto the pin holding the material in place
- Quick-fit tools can be used over and over again
- Great for fitting with material and also holding paper or plastic material patterns
- Accurately mark the cover as to where sockets are placed
- Use on tonneau covers, cockpit covers, side curtains, enclosures, biminis, dodgers, etc
- Kit contains 50 fit pins, 25 holding caps and 1 release tool



CODE	DESCRIPTION	PACK QTY
C896CAP	PLASTIC HOLDING CAP	EACH
C896	FIT PIN SOCKET	50/BOX
C897	RELEASE TOOL	EACH
C896KIT	KIT	EACH

## PRESS-N-SNAP TOOL

- A hand action tool for closing grommets, rivets and setting button snap fasteners
- HC360 tool comes complete with die sets for No 1 washer grommets, Button Snaps & durables



CODE	DESCRIPTION	FASTENER
HC360	PRESS-N-SNAP TOOL	DURABLES

## PULL-THE-DOT FASTENERS

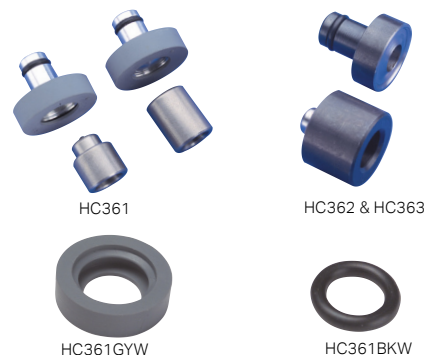
- A heavy duty three sided locking snap fastener that is built to withstand extreme pressure on three sides without unlocking
- When pulled on the fourth side where the Pull-the-dot trademark appears, the fastener releases instantly
- DOT fasteners are sold in full packs of 100 only



CODE	DESCRIPTION	MFR#
G170	PULL-THE-DOT BUTTON CAP	92-18100
G172	PULL-THE-DOT SOCKET	92-18201
G173	PULL-THE-DOT STUD	92-18303
G176	PULL-THE-DOT SCREW STUD	92-18307
G145	6.4MM/ 1/4" POST	93-10412
G146	7.0MM/ 5/16" POST	93-10413

## DIES FOR PRESS-N-SNAP TOOL

- HC361 - Four piece set
- HC362/363 - Two piece sets



CODE	DESCRIPTION	FOR USE WITH
HC361	BUTTON FASTENERS SET	DURABLES
HC362	NO 0 SPUR GROMMET, SET	D003
HC363	NO 1 SPUR GROMMET, SET	D004
HC361GYW	SPARE GREY WASHER	-
HC361BKW	SPARE BLACK 'O' RING	-

# T-TOGGLES WITH METAL FLIPPER

ALL T-TOGGLES ARE AVAILABLE IN BLACK & WHITE

## SINGLES



CODE	DESCRIPTION
SPMVS	T-TOGGLES VERTICAL SINGLE WITH METAL FLIPPER - WHITE
SPMVSB	T-TOGGLES VERTICAL SINGLE WITH METAL FLIPPER - BLACK
SPMHS	T-TOGGLES HORIZONTAL SINGLE WITH METAL FLIPPER - WHITE
SPMHSB	T-TOGGLES HORIZONTAL SINGLE WITH METAL FLIPPER - BLACK
SPMCCS	T-TOGGLES CANVAS TO CANVAS SINGLE WITH METAL FLIPPER - WHITE (INCLUDES NUTS)
SPMCCSB	T-TOGGLES CANVAS TO CANVAS SINGLE WITH METAL FLIPPER - BLACK (INCLUDES NUTS)

## DOUBLES



CODE	DESCRIPTION
SPMVD	T-TOGGLES VERTICAL DOUBLE WITH METAL FLIPPER - WHITE
SPMVDB	T-TOGGLES VERTICAL DOUBLE WITH METAL FLIPPER - BLACK
SPMHD	T-TOGGLES HORIZONTAL DOUBLE WITH METAL FLIPPER - WHITE
SPMHDB	T-TOGGLES HORIZONTAL DOUBLE WITH METAL FLIPPER - BLACK
SPMCCD	T-TOGGLES CANVAS TO CANVAS DOUBLE WITH METAL FLIPPER - WHITE (INCLUDES NUTS)
SPMCCDB	T-TOGGLES CANVAS TO CANVAS DOUBLE WITH METAL FLIPPER - BLACK (INCLUDES NUTS)

# T-TOGGLES STAINLESS STEEL

316 GRADE

## SINGLES



CODE	DESCRIPTION
QCDTVS	T-TOGGLES VERTICAL SINGLE STAINLESS STEEL 316
QCDTHS	T-TOGGLES HORIZONTAL SINGLE STAINLESS STEEL 316

## DOUBLES



CODE	DESCRIPTION
QCDTV	T-TOGGLES VERTICAL DOUBLE STAINLESS STEEL 316
QCDT	T-TOGGLES HORIZONTAL DOUBLE STAINLESS STEEL 316



## T-TOGGLES



CODE	DESCRIPTION
SPMHK	T-TOGGLES ANNEX HOOK
SPMH	T-TOGGLES MARQUEE HOOK

## SIDE RELEASE BUCKLES

ITW FASTEX



CODE	SIZE (MM)	DESCRIPTION	BAGS OF
950-1142	19 (¾ INCH)	FASTEX WORLD SIDE RELEASE BUCKLE TO FIT 19MM WEBBING	100
950-1135	25 (1 INCH)	FASTEX WORLD SIDE RELEASE BUCKLE TO FIT 25MM WEBBING	100
950-1119	40 (1 ½ INCH)	FASTEX WORLD SIDE RELEASE BUCKLE TO FIT 40MM WEBBING	100
950-1113	50 (2 INCH)	FASTEX WORLD SIDE RELEASE BUCKLE TO FIT 50MM WEBBING	100

## METAL CAMLOC



CAM25B



CAM25SS

CODE	DESCRIPTION
CAM25B CAM25SIL CAM25SSS	25MM (1 INCH) AVAILABLE IN BLACK ENAMEL, NICKEL & STAINLESS STEEL FINISHES
CAM50B	50MM (2 INCH) AVAILABLE IN ZINC METAL PLATED FINISH ONLY

## SISTER CLIP

- Allows fast and positive sheet attachment to sail
- Use on one-design or light air spinnakers



CODE	DESCRIPTION	LENGTH	PACK QTY
HB605	STAINLESS STEEL WITH FERRULE	38 MM	10

# PASKAL SIDE RELEASE BUCKLE



- Plastic side release buckles and snap buckles can be used for a variety of different applications, though they are most used to make belts and straps
- Paskal Side Release Buckles are the effective way to secure the straps on backpacks, school bags, shoulder bags, laptop bags, tent bags, tool belts and more

CODE	SIZE	PACK QTY
PKSRB19	19MM	100
PKSRB25	25MM	100
PKSRB32	32MM	100
PKSRB38	38MM	100
PKSRB50	50MM	100

# SIVELLA SIDE RELEASE BUCKLE



- The SIVELLA range is our premium range of side release buckles that have been engineered to provide maximum strength & performance
- Complementing this is the stylish design & high quality surface finish making the SIVELLA series both pleasing to the eye as well as ideal for side release applications

CODE	SIZE	PACK QTY
FTSR19	19MM	100
FTSR25	25MM	100
FTSR38	38MM	100
FTSR50	50MM	100

# TRI GLIDES



- The Tri-glides strap adjuster provides length adjustment on strap assemblies. The Tri-glides grip webbing securely & work well in combination with other buckles as a means of securing loose webbing

CODE	SIZE	PACK QTY
PK2824/19	19MM	100
PK2824/25	25MM	100
PK2824/32	32MM	100
PK2824/38	38MM	100
PK2824/50	50MM	100

# CAMLOC BUCKLE

PLASTIC



- Plastic camloc Buckles provide an easy-to-use and easy-to-adjust means of securing webbing
- Locking doors trap the webbing to prevent unintentional slippage

CODE	SIZE	PACK QTY
FCL25	25MM	100

# D RING PLASTIC



CODE	WIDTH	DESCRIPTION	FIBRE	BAGS OF
PK2825	25MM	UV RESISTANT	POLYACETAL	100

## PLASTIC LOOPLOC



- Paskal Looplocs are ideal for holding straps or webbing where no adjustment is needed

CODE	SIZE	PACK QTY
FX-3860825	25MM	100
FX-3860838	38MM	100
FX-3860850	50MM	100

## ZIPPER PULL



- Plastic cord end closures come with easy locking plastic clips. The plastic clasp covers come with clips. They are great plastic closures for making plastic zipper pulls

CODE	DESCRIPTION	BAGS OF
PK2728	UV RESISTANT	100

## LADDERLOC



- Ladderloc adjustment buckles are the most versatile buckles, allowing easy, one-handed release or tightening of webbing and straps
- All Ladderlocs have been designed to minimize slippage of the webbing while allowing smooth and easy tightening

CODE	WIDTH	DESCRIPTION	FIBRE	BAGS OF
FLL19	19MM	UV RESISTANT	POLYACETAL	100
FX-3861426	25MM	UV RESISTANT	POLYACETAL	100

## BARRELOCS



- Designed for the toughest environments including saltwater, dirt, mud, indoor or outdoor use

CODE	SIZE	SPRING	FIBRE	BAGS OF
PK2704	SMALL	METAL	ROUND	100
PK2708	SMALL	METAL	SQUARE	100
PK2707	LARGE	PLASTIC	RECTANGLE	100

## QCD HOOK & LOOP

- This Nylon fastener is a two part system; one part consisting of rows of hooks and the other part of a mass of loops, when pressed together, they form a highly secure closure, yet can be easily re-opened with a simple peeling action
- Available in sew on and pressure sensitive adhesive backed forms
- Excellent properties for thermo-resistance, chemical resistance and electrical insulation
- Heat resistance: Becoming soft at 180 °C and melted at 215°C
- Cold resistance: usable to -30°C, the lower the temperature the stronger the tensile force

CODE	DESCRIPTION	WIDTH	SPOOLS IN LENGTH	BOX QTY
V16H	HOOK	5⁄8" INCH   16 MM	25 M	30
V16L	LOOP	5⁄8" INCH   16 MM	25 M	30
V25H	HOOK	1" INCH   25 MM	25 M	20
V25L	LOOP	1" INCH   25 MM	25 M	20
V38H	HOOK	1 1⁄2" INCH   38 MM	25 M	14
V38L	LOOP	1 1⁄2" INCH   38 MM	25 M	14
V50H	HOOK	2" INCH   50 MM	25 M	10
V50L	LOOP	2" INCH   50 MM	25 M	10
V100H	HOOK	4" INCH   100 MM	25 M	5
V100L	LOOP	4" INCH   100 MM	25 M	5



## SELF ADHESIVE

### ACRYLIC

- Self Adhesive Tape is an acrylic pressure sensitive adhesive for high temperature performance and superior bond strength for uses in automotive, computer medical and other industries
- Moderate tack - medium set up
- High Strength
- High Temperature use
- Full bond strength - 24 hours
- Temperature operating range -20 °C to 110 °C

CODE	DESCRIPTION	WIDTH	SPOOLS IN LENGTH	BOX QTY ?
V25HA	HOOK	1" INCH   25 MM	25 M	
V25LA	LOOP	1" INCH   25 MM	25 M	
V50HA	HOOK	2" INCH   50 MM	25 M	
V50LA	LOOP	2" INCH   50 MM	25 M	



TUBE ENDS



CODE	DESCRIPTION
SM101	TUBE END 25MM BLACK SLIDES INSIDE 25MM X 1.6MM TUBING
SM103	TUBE END 25MM BLACK SLIDES INSIDE 25MM X 3MM TUBING
SM105	TUBE END 20MM BLACK SLIDES INSIDE 20MM X 1.6MM TUBING

BUNJI KNOB



CODE	DESCRIPTION
SM501	BUNJI KNOB (BLACK) SUITS UP TO 8MM ROPE/SHOCK CORD. INTERNAL FIXING HOLE SUITS UP TO SIZE 6 RIVET

DECKMOUNTS

FLAT - EXTENDED



CODE	DESCRIPTION
SM307	DECKMOUNT FLAT (BLACK) THIS UNIT HAS A FLAT BASE TO SUIT FLAT DECKS INCLUDES STAINLESS STEEL 1/4 INCH (6MM) DIAMETER SCREW & NUT

BOW KNUCKLES



CODE	DESCRIPTION
SM201	BOW KNUCKLES 25MM (BLACK) CLAMPS AROUND 25MM TUBING INCLUDES STAINLESS STEEL 1/4 INCH (6MM) DIAMETER SCREW & NUT
SM203	BOW KNUCKLES 20MM (BLACK) CLAMPS AROUND 20MM TUBING INCLUDES STAINLESS STEEL 1/4 INCH (6MM) DIAMETER SCREW & NUT

THUMBSCREWS



CODE	DESCRIPTION
SM401	THUMBSCREW (BLACK) USED WHERE A FRAME IS CONTINUOUSLY LOOSENED OR REMOVED. STAINLESS STEEL 1/4 INCH (6MM) SCREW

## DECK HINGE FITTINGS

### SCREW PIN

#### PRODUCT FEATURES

- Die cast type 316 stainless steel
- Mirror polished finish



CODE	DESCRIPTION	PACK QTY
G622S	FLAT HINGE WITH SCREW PIN	10
G623S	ANGLE HINGE WITH SCREW PIN	10

## DECK HINGE FITTINGS

### REMOVABLE PIN

#### PRODUCT FEATURES

- Die cast type 316 stainless steel
- Mirror polished finish



CODE	DESCRIPTION	PACK QTY
G625S	FLAT HINGE WITH REMOVABLE DROP NOSE PIN	10

## REMOVABLE PIN

#### PRODUCT FEATURES

- Die cast type 316 stainless steel
- Mirror polished finish



CODE	DESCRIPTION	PACK QTY
G627PIN	DROP NOSE PIN 6.4MM/ 1/4" O.D.	10
G625PIN	QUICK RELEASE PIN 6.4MM/ 1/4" O.D. WITH SS RING	10
G637PIN	DROP NOSE PIN 6.4MM/ 1/4" O.D. WITH SS RING	10

## SIDE MOUNT FITTING

#### PRODUCT FEATURES

- Die cast type 316 stainless steel
- Mirror polished finish
- Accepts all sizes of eye end



CODE	DESCRIPTION	PACK QTY
G624S	4 HOLE SIDE MOUNT 8.0MM   5/16" BOLT	10
G629S	2 HOLE SIDE MOUNT 6.4MM   1/4" BOLT	10

## LANYARD

#### PRODUCT FEATURES

- Stainless steel



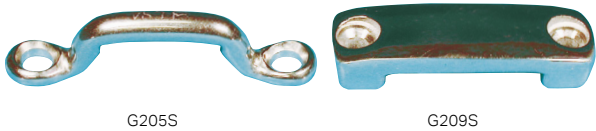
CODE	DESCRIPTION	PACK QTY
G625LAN	STAINLESS STEEL WIRE - 152MM   6"	10
G634LT	6.4MM   1/4" I.D. PIN 125MM   6" SS WIRE WITH TAB	10

## FOOTMAN LOOP

### WEB BRIDGE

#### PRODUCT FEATURES

- Stainless steel



CODE	DESCRIPTION	WIDTH (MM   IN)	PACK QTY
G205S	STAINLESS STEEL	25   1	10
G209S	STAINLESS STEEL	25   1	10



## UNIVERSAL DECK HINGES

STAINLESS STEEL

### PRODUCT FEATURES

- Universal deck hinge compensates for different angles of decks and coamings. Made from mirror polished stainless steel, even vertical surfaces can be accommodated
- Die cast type 316 stainless steel
- Mirror polished finish
- Accepts all sizes of eye end
- Compensates for different deck and coaming angles including vertical surfaces



CODE	DESCRIPTION	PACK QTY
G615S	UNIVERSAL DECK HINGE WITH SCREW	10

## QUICK RELEASE DECK MOUNT

### PRODUCT FEATURES

- Spring-loaded release button ejects eye end for almost instant frame removal
- Stylish and unique design
- Manufactured from type 316 stainless steel
- Use with G611S, G631S and G641S

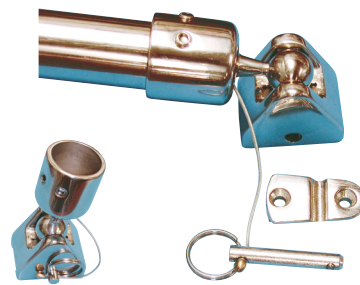


CODE	DESCRIPTION	PACK QTY
G605S	QUICK RELEASE DECK MOUNT	10

## BALL SWIVEL WITH QUICK RELEASE DECK MOUNT & EYE END

### PRODUCT FEATURES

- Manufactured from 316 stainless steel
- Greater range of motion
- Base screws to the deck
- Removing quick pin allows hinge to slide off the base
- Double set screws



CODE	DESCRIPTION	PACK QTY
G771S	22MM   7/8" BALL SWIVEL DECK HINGE	10
G731S	25MM   1" BALL SWIVEL DECK HINGE	10

## BALL SWIVEL JAW SLIDE AND EYE ENDS

### PRODUCT FEATURES

- Increase frame versatility
- Allows full movement range
- Manufactured from 316 stainless steel
- Double set screws



CODE	DESCRIPTION	PACK QTY
G770S	22MM   7/8" BALL SWIVEL JAW	10
G730S	25MM   1" BALL SWIVEL JAW	10

# SIDE MOUNT JAW SLIDE

## PRODUCT FEATURES

- Allows outboard or inboard mounts of Gemlock struts
- Outboard mount allows the Gemlock strut to act as grab rail
- Grab rail stands off to allow bimini to fold flat



CODE	DESCRIPTION
G633S	22MM   7/8" STAINLESS STEEL
G635S	25MM   1" STAINLESS STEEL

# STAINLESS STEEL RATCHET BUCKLES

## PRODUCT FEATURES

- Stainless steel ratchet buckles (SS304) for use tying down loads and tensioning fabric



CODE	DESCRIPTION
RB800	800KG RATCHET BUCKLE
RB1500	1500KG RATCHET BUCKLE

# STAINLESS STEEL TUBE ENDS



CODE	DESCRIPTION	TUBE SIZE
G611S	STAINLESS STEEL TUBE END CAP WITH EYE	19MM
G621S	STAINLESS STEEL TUBE END CAP WITH EYE	22MM
G631S	STAINLESS STEEL TUBE END CAP WITH EYE	25MM

# STAINLESS STEEL BOW KNUCKLE



CODE	DESCRIPTION	TUBE SIZE
G610S	STAINLESS STEEL BOW KNUCKLE WITH BOLT	19MM
G620S	STAINLESS STEEL BOW KNUCKLE WITH BOLT	22MM
G631S	STAINLESS STEEL BOW KNUCKLE WITH BOLT	25MM

# SEPARATING BOW KNUCKLES



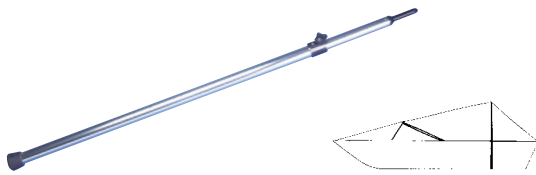
CODE	DESCRIPTION	TUBE SIZE
G820S	STAINLESS STEEL SEPARATING BOW KNUCKLE	22MM
G830S	STAINLESS STEEL SEPARATING BOW KNUCKLE	25MM
G840S	STAINLESS STEEL SEPARATING BOW KNUCKLE	32MM
G842S	STAINLESS STEEL SEPARATING BOW KNUCKLE	50MM

## ADJUSTABLE MOORING POLE

ALUMINIUM

### PRODUCT FEATURES

- Comes with three interchangeable tips
- No. 1 - pole end fits No. 3 spur grommet
- No. 2 - soft vinyl tip similar to the foot
- No. 3 - with button snap accepts standard G142 socket
- Aluminium support pole adjusts from 1m | 40" to 1.7m | 70"

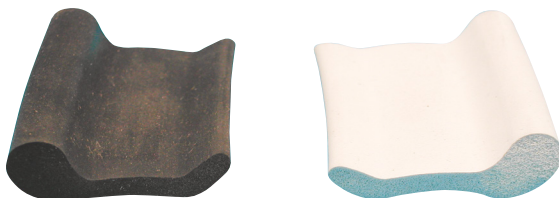


CODE	DESCRIPTION
G370	ADJUSTS FROM 1.0 TO 1.7 METERS   40 TO 70 INCHES

## XTREME SEAL

### PRODUCT FEATURES

- Xtreme Seal edge seal is a closed-cell flexible material that can be glued or sewn to most materials and surfaces.
- Edge seal creates a three-point contact seal on most surfaces.
- Perfect choice as an edge seal on all types of custom covers.
- Can be used on convertible tops, side curtains, windshield tops, radar arches and awnings.
- Place Xtreme Seal under the binding edge on the inside of the finished surface, large bead towards the back and the small tip 1/8 to 1/4 inch revealed. Place the material and Xtreme Seal under sewing machine canvas side up.

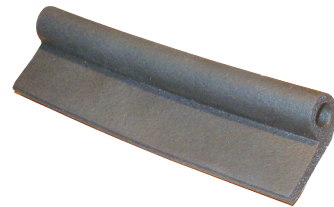


CODE	DESCRIPTION	EDGE SEAL LENGTH	WIDTH
L710BK	BLACK	44MM   1 3/4"	30/100
L710WT	WHITE	44MM   1 3/4"	30/100

## SPRAY WELT WITH ADHESIVE

### PRODUCT FEATURES

- This is a new and fully functional spray welt manufactured from extruded foam rubber and is well suited for almost all applications where a tight, waterproof seal is required when a panel or enclosure is clamped into place
- P-section design ensures maximum efficiency
- Durable extruded foam rubber composition
- Hi-tack adhesive with release paper on rear
- Sold in economical 13m/50 feet and 76m/250 feet reels
- This product is ideal weather strip for sealing; enclosures, dodgers, covers etc



CODE	DESCRIPTION
L705BKA	1 1/4" - WIDE BLACK RUBBER WITH PRESSURE SENSITIVE ADHESIVE

# SUNBLOCKER CLIP

## PRODUCT FEATURES

- Sunblocker is a self insulated protective clip which eliminates contact between your metal tubular top frame and the clear plastic windows
- Two or three Sunblocker clips on metal frame tubing can give maximum protection against destruction of clear plastic windows, by reducing singeing, scorching and heat cracking
- Designed cooling air vents
- All rounded corners eliminates abrasion

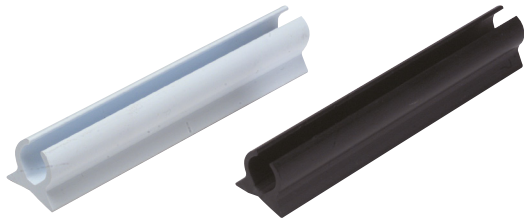


CODE	DESCRIPTION	PACK QTY
G638	SINGLE FOR USE WITH TUBE OUTSIDE DIAMETER 22MM   7/8"	50
G639	SINGLE FOR USE WITH TUBE OUTSIDE DIAMETER 25.4MM   1"	50

# FLEX-A-RAIL AWNING TRACK

## PRODUCT FEATURES

- Flexible, non-corrosive extruded PVC track
- Works best with L575/LS001/LS002
- Highly flexible for easy installation
- Use flat or oval head screws to install (D355/D356)
- Use 3M VHB tape to help install Fex-A-Rail

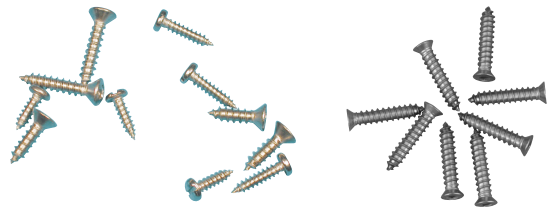


CODE	DESCRIPTION	INTERNAL DIAMETER	OVERALL LENGTH
CANTRACKV3	WHITE PVC	8MM   5/16"	3000
CANTRACKV3BK	BLACK PVC	8MM   5/16"	6000

# STAINLESS STEEL SCREWS FOR ATTACHING TRACK

## PRODUCT FEATURES

- Use to attach Flex-A-Rail, Cover Trax and all other types of awning track
- Screws are sold in full packs of 100

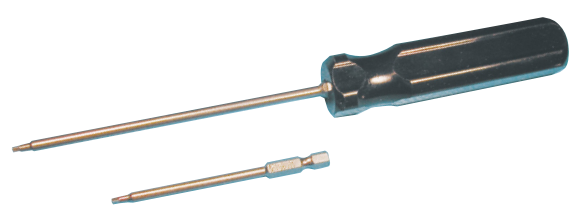


CODE	SIZE (MM   IN)	STYLE	HEAD
HD371	NO. 4 HEAD, NO. 6 BODY 19MM   3/4 INCH	SELF TAPPING	SQUARE

# SQUARE HEAD SCREWDRIVER

## PRODUCT FEATURES

- Use with D371 square head screws
- Narrow shaft will NOT scratch Flex-a-Rail

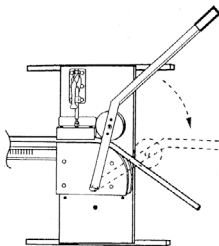


CODE	DESCRIPTION
HC335	SIZE 0 SQUARE HEAD SCREWDRIVER
HC336	SIZE 0 SQUARE HEAD SCREWDRIVER BIT

# BENDARC TUBE BENDER

## PRODUCT FEATURES

- Bendarc Quick-Switch - Gives strong bends with smooth rounded corners
- Designed for wall or bench mounting and easy pull down use, Bendarc can bend 152mm/6 inch radius to 300mm/12 inch radius, depending on which dies are purchased
- Easy, pull-down use. Wall mounting allows your body weight to help
- Quick and easy to switch sizes
- Constructed of boiler plate steel with bearing supported roller and powerful 998kg/2200 lb. clamp
- Rollers are high density polymer for mar resistant contact with fine tubing finishes
- Other size radius dies, rollers are available

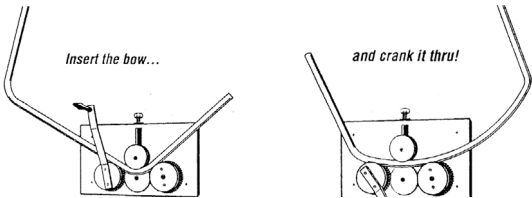


CODE	DESCRIPTION
G635S	BEND 25MM   1" TUBE TO 203MM   8" RADIUS
	BEND 25MM   1" TUBE TO 250MM   10" RADIUS

# CROWNARC TUBE BENDER

## PRODUCT FEATURES

- Crownarc - The only crowner with gear drive
- Mounted on the wall, a table or on the side or rear of a truck, Crownarc puts a crown onto tubing
- Bends 19, 22 & 25mm | ¾, 7⁄8 & 1 inch outside diameter tubing using the same dies
- Dies and rollers are mounted on a backplate of boiler plate steel
- Rollers are high density polymer
- The centre roller is fully adjustable



CODE	DESCRIPTION
C998	19,22 & 25MM   ¾, 7⁄8 & 1" TUBING

# ANCHOR CLEAT

SOLCOR



## PRODUCT FEATURES

- Compatible with 6mm and 8mm Shock Cord only
- Secure anchor point from which cord can be cleated to required length

CODE	DESCRIPTION	IN BAGS OF
SOLCORAA	SOLCOR ADJUSTABLE ANCHOR	100

# PERMANENT CONNECTOR

SOLCOR



## PRODUCT FEATURES

- Compatible with 6mm and 8mm Shock Cord only
- Allows 'locked' connection of cord to create various formations; loops, circles, joining two lengths

CODE	DESCRIPTION	IN BAGS OF
SOLCORPC	SOLCOR SHOCK CORD CONNECTOR (3 PART)	100

# ADJUSTABLE CONNECTOR

SOLCOR



## PRODUCT FEATURES

- Compatible with 6mm and 8mm Shock Cord only
- Joins cord, creates fixed and running loops for cord and rope

CODE	DESCRIPTION	IN BAGS OF
SOLCORAE	SOLCOR SHOCK CORD CONNECTOR ADJUSTABLE	100

# WHIPPING ENDS

SOLCOR



## PRODUCT FEATURES

- To suit 6mm and 8mm Shock Cord only
- Heat shrink whipping ends onto the ends of cut cord or rope to prevent fraying

Prepackaged in packets of 12 (includes instructions)

CODE	DESCRIPTION	IN BAGS OF
SOLCORWHIP	SOLCOR WHIPPING ENDS	12

# PERMANENT HOOK

SOLCOR



## PRODUCT FEATURES

- Compatible with 6mm and 8mm Shock Cord only
- 'Locked' hook with point of effort in the centre

CODE	DESCRIPTION	IN BAGS OF
SOLCORPH	SOLCOR SHOCKCORD HOOK (2 PARTS)	100

# ADJUSTABLE HOOK

SOLCOR



## PRODUCT FEATURES

- Compatible with 6mm and 8mm Shock Cord only
- Cleat hook allowing variation in cord length and tension

CODE	DESCRIPTION	IN BAGS OF
SCAJ	SOLCOR J-HOOK ADJUSTABLE SHOCK CORD HOOK	100



SOLCOR CORD

PRODUCT FEATURES

This shockcord is comprised of mono cord rubber covered by a variety of sheaths.

ADVANTAGES OF MONOCORD MULTIFILAMENTS:

- Increased Core stability
- No splaying of ends when cutting
- No twisting
- Resistance to water and chemical impregnation
- Increased life span
- Consistency and retention of elasticity

Polyester sheaths are recommended for marine & transport applications.



CODE	SIZE	STYLE	IN ROLLS OF
SOLCOR4BLK	4MM	ELASTIC SHOCK CORD - POLYESTER SHEATH - BLACK	100M
SOLCOR6BLK	6MM	ELASTIC SHOCK CORD - POLYESTER SHEATH - BLACK, WHITE	100M
SOLCOR8BLK	8MM	ELASTIC SHOCK CORD - POLYESTER SHEATH - BLACK	100M

PLASTIC LOCKING SHOCK CORD HOOK

PRODUCT FEATURES

- Two part hook with locking cover secures shock cord to hook without separate clamps or knots
- Use for tie down cords



CODE	CORD DIAMETER	LENGTH	COLOUR	QTY
386-0373	5MM   1/4"	45MM   1 3/4"	BLACK DELRIN	100
386-0371	8MM   5/16"	73MM   2 7/8"	BLACK NYLON	500

SHOCK CORD

MULTI FILAMENT

PRODUCT FEATURES

- Made in NZ this is NZ's most trusted brand of shock cord
- Made from multi filament elastic cord
- Covered in Polyester yarn, and designed to be in NZ's extreme UV conditions



CODE	COLOUR	SIZE IN MM
SC3BK	BLACK	3
SC3WT	WHITE	3
SC4BK	BLACK	4
SC4WT	WHITE	4
SC5BK	BLACK	5
SC5WT	WHITE	5
SC6BK	BLACK	6
SC6WT	WHITE	6
SC7BK	BLACK	7
SC7WT	WHITE	7
SC8BK	BLACK	8
SC8WT	WHITE	8
SC10BK	BLACK	10
SC10WT	WHITE	10

SHOCK CORD CLAMPS



CODE	DESCRIPTION	SIZE	BAGS OF
HB449	STAINLESS STEEL SHOCK CORD CLAMPS	3.5MM	100
HB450	STAINLESS STEEL SHOCK CORD CLAMPS	6MM	100
HB451	STAINLESS STEEL SHOCK CORD CLAMPS	8MM	100
HB452	STAINLESS STEEL SHOCK CORD CLAMPS	10MM	100
HB453	STAINLESS STEEL SHOCK CORD CLAMPS	12MM	100

CLAMP PLIERS



CODE	DESCRIPTION
HC449	CLAMP PLIERS FOR CLOSING CLAMPS Q-HB449-453

# GENERAL PURPOSE WEBBING

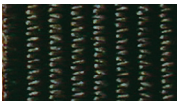
O42 INDUSTRY STANDARD

## PRODUCT FEATURES

- Heatset
- Canvas work
- Equestrian
- Ruck sacks/back packs
- Pet accessories



WHITE W16



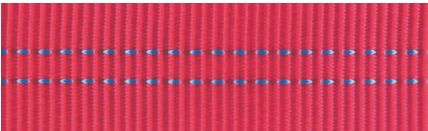
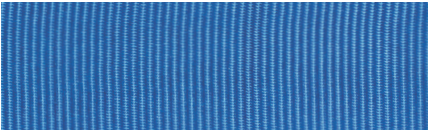
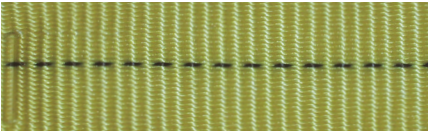
BLACK B17

CODE	COLOUR	TAPE WIDTH	BREAKING STRENGTH	ROLL LENGTH
QCD042-19	WHITE	19MM   ¾ INCH	1100KG	50M
QCD042-25	WHITE	25MM   1 INCH	1500KG	50M
QCD042-38	WHITE	38MM   1½ INCH	1900KG	50M
QCD042-50	WHITE	50MM   2 INCH	2500KG	50M
QCD042-19B	BLACK	19MM   ¾ INCH	1100KG	50M
QCD042-25B	BLACK	25MM   1 INCH	1500KG	50M
QCD042-38B	BLACK	38MM   1½ INCH	1900KG	50M
QCD042-50B	BLACK	50MM   2 INCH	2500KG	50M

# SUPER HEAVY WEIGHT

NYLON TUBULAR

- Available only on full reels



CODE	WIDTH	BREAKING STRENGTH	REEL LENGTH	COLOUR
HE124NBU	25MM   1 INCH	1800KG   4000LB	50M   54YD	BLUE
HE124NBK	25MM   1 INCH	1800KG   4000LB	50M   54YD	BLACK
HE124NBY	25MM   1 INCH	1800KG   4000LB	50M   54YD	YELLOW
HE124NRD	25MM   1 INCH	1800KG   4000LB	50M   54YD	RED
HE124NWT	25MM   1 INCH	1800KG   4000LB	50M   54YD	WHITE

# HEAVY WEIGHT POLYESTER

SAIL MAKER

## PRODUCT FEATURES

- Strong, low stretch webbing ideal for strapping rings on sails
- Flat, non-tubular webbing
- Excellent UV resistance
- Very low stretch
- Minimal shrinkage
- Available only on full reels
- Loomstate (not heat set)



CODE	WIDTH	BREAKING STRENGTH	REEL LENGTH	COLOUR
QCD042-19SM	19MM   ¾ INCH	950KG	50M	WHITE
QCD042-19BSM	19MM   ¾ INCH	950KG	50M	BLACK
QCD042-25SM	25MM   1 INCH	1250KG	50M	WHITE
QCD042-25BSM	25MM   1 INCH	1250KG	50M	BLACK
QCD042-38SM	38MM   1½ INCH	1850KG	50M	WHITE
QCD042-38BSM	38MM   1½ INCH	1850KG	50M	BLACK
QCD042-50SM	50MM   2 INCH	2450KG	50M	WHITE
QCD042-50BSM	50MM   2 INCH	2450KG	50M	BLACK

## HERRINGBONE STYLE POLYESTER

SAIL MAKER

### PRODUCT FEATURES

- Rugged polyester webbing, five panel construction, recommended for hiking straps, bag handles, nose piece for kites, reinforcement, tie down, trampolines etc
- Excellent UV resistance
- Available only on full reels
- Loomstate (not heatset)



CODE	WIDTH	BREAKING STRENGTH	REEL LENGTH	COLOUR
QCD012-19SM	19MM   ¾ INCH	N/A	250M	WHITE
QCD012-25SM	25MM   1 INCH	700KG	100M	WHITE
QCD012-38SM	38MM   1 ½ INCH	1000KG	100M	WHITE
QCD042-50SM	50MM   2 INCH	1500KG	100M	WHITE

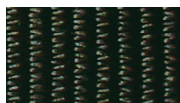
## LOAD BINDER WEBBING 108

### PRODUCT FEATURES

- Tied down straps
- Rub pads
- High strength



WHITE W16



BLACK B17

CODE	WIDTH	BREAKING STRENGTH	COLOUR	ROLL LENGTH
QCD10825B	25MM   1 INCH	2000KG	BLACK	50M
QCD10825W	25MM   1 INCH	2000KG	WHITE	50M
QCD10850B	50MM   2 INCH	4500KG	BLACK	50M
QCD10850W	50MM   2 INCH	4500KG	WHITE	50M
QCD10875B	75MM   3 INCH	6500KG	BLACK	50M
QCD10875W	75MM   3 INCH	6500KG	WHITE	50M

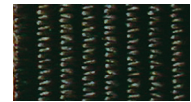
## SEAT BELT WEBBING 012

### PRODUCT FEATURES

- General Industry canvas work
- Shade sails
- Heatset



WHITE W16



BLACK B17

CODE	WIDTH	BREAKING STRENGTH	ROLL LENGTH
QCD01225B	25MM   1 INCH	1000KG	100M
QCD01225W	25MM   1 INCH	1000KG	100M
QCD01232B	32MM   1 ¼ INCH	1250KG	100M
QCD01232W	32MM   1 ¼ INCH	1250KG	100M
QCD01238B	38MM   1 ½ INCH	1500KG	100M
QCD01238W	38MM   1 ½ INCH	1500KG	100M
QCD01250B	50MM   2 INCH	2000KG	100M
QCD01250W	50MM   2 INCH	2000KG	100M
QCD01275B	75MM   3 INCH	3000KG	100M
QCD01275W	75MM   3 INCH	3000KG	100M
QCD012100B	100MM   4 INCH	4000KG	100M
QCD012100W	100MM   4 INCH	4000KG	100M

## WELDABLE PVC WEBBING

COATED POLYESTER



CODE	WIDTH	COLOUR	ROLL LENGTH
QCDWELD50W	50MM   2 INCH	WHITE	50M

# LEOLENE BINDING

## PRODUCT FEATURES

- General Bindings
- UV stabilised
- Herringbone pattern

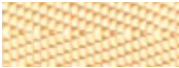
CODE	WIDTH	COLOURS	ROLL LENGTH
QCD53-25	25MM	VARIOUS	100M
QCD53-50B	50MM	BLACK	50M



WHITE  
QCD53-25W



BLACK  
QCD53-25B  
QCD53-50B(L)



NATURAL  
QCD53-25NAT



SILVER  
QCD53-25SIL



DARK GREY  
QCD53-25G



SAND  
QCD53-25SA



BROWN  
QCD53-25BR



RED  
QCD53-25R



ROYAL BLUE  
QCD53-25RB



FOREST GREEN  
QCD53-25FG



PURPLE  
QCD53-25P



NAVY  
QCD53-25N



SILVER/BLACK  
QCD53-25SIL/BLK



BLACK/ROYAL BLUE  
QCD53-25BLK/RB



BLACK/SILVER  
QCD53-25BLK/SIL



GREY/BLACK  
QCD53-25GB

# BINDING TAPE 406

TEXTURED POLYESTER

## PRODUCT FEATURES

- General binding tape
- Black is now solutions dye (UV treated)
- Specifically designed for binders
- 300m Spools available on indent

CODE	WIDTH	ROLL LENGTH
TP406/25	25MM   1 INCH	100M ROLL
TP406/36	36MM   1 5/8 INCH	100M SPOOL
TP406/25(300)	25MM   1 INCH	300M SPOOL    INDENT



WHITE W16  
TP406/25W16  
TP406/36W16



NATURAL B01  
TP406/25B01



BEIGE B08  
TP406/25B08



GREY G11  
TP406/25G11  
TP406/36G11



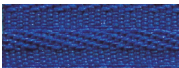
CHARCOAL G30  
TP406/25G30



BLACK B17  
TP406/25B17



BABY BLUE B06  
TP406/25B06  
TP406/36B06



ROYAL R31  
TP406/25R31  
TP406/36R31



NAVY N27  
TP406/25N27



BOTTLE GREEN G33  
TP406/25G33



EMERALD G35  
TP406/25G35



GOLD G25  
TP406/25G25  
TP406/36G25



RED R20  
TP406/25R20  
TP406/36R20



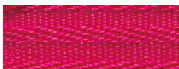
RED R25  
TP406/25R25



BURGUNDY M19  
TP406/25M19  
TP406/36M19



PURPLE P23  
TP406/25P23



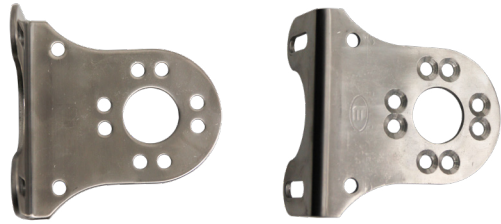
HOT PINK P22  
TP406/25P22

## GEARBOXES



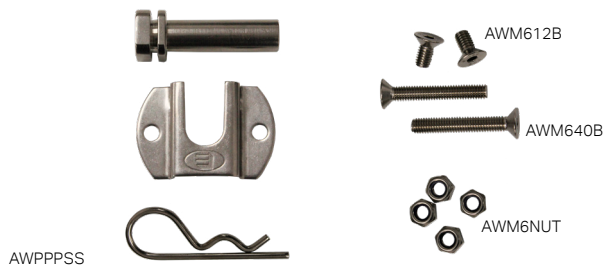
CODE	DESCRIPTION
AWGB71B	GEAR BOX 7:1 BLACK
AWGB71W	GEAR BOX 7:1 WHITE
AWGB71G	GEAR BOX 7:1 GREY
AWM6NUT	M6 NUTS FOR GEAR BOX BRACKETS & PLATES
AWM640B	M6 BOLT FOR GEAR BOX STAINLESS STEEL 40MM

## AWNING GEARBOX BRACKETS



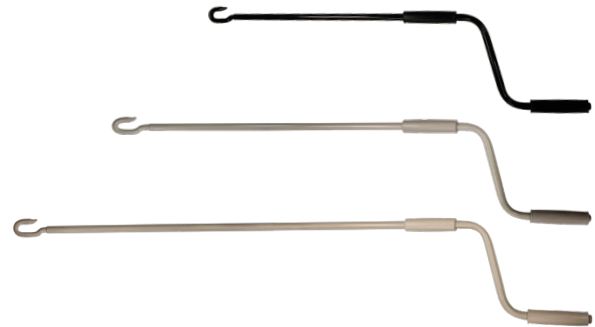
CODE	DESCRIPTION
AWGBPLSS	AWNING PLATE 65MM - STAINLESS
AWGBBKT65SS	AWNING BRACKET 65MM - STAINLESS
AWGBBKT80SS	AWNING BRACKET 80MM - STAINLESS

## PIVOT PIN & PLATES



CODE	DESCRIPTION
AWPPSS	PIVOT PIN & PLATE - STAINLESS STEEL
AWM6NUT	NUTS FOR PIVOT PIN & PLATE - STAINLESS STEEL
AWM612B	M6 X 12MM BOLT 304SS CSK SOCKET SCREW
AWM640B	M6 X 40MM BOLT 304SS CSK SOCKET SCREW

## CRANK HANDLES



CODE	DESCRIPTION	COLOUR
AWCH0800	CRANK HANDLE 800MM	GREY, WHITE, BLACK
AWCH1200	CRANK HANDLE 1200MM	GREY, WHITE, BLACK
AWCH1600	CRANK HANDLE 1600MM	GREY, WHITE, BLACK
AWCH2000	CRANK HANDLE 2000MM	GREY, WHITE, BLACK
AWCH2500	CRANK HANDLE 2500MM	GREY, WHITE, BLACK

## KEYWAY TUBE ENDS



CODE	DESCRIPTION
AWDE70	DRIVE END 70MM
AWIE70	IDLER END W/HOLE 70MM
AWDE78	DRIVE END 78MM
AWIE78	IDLER END W/HOLE 78MM

## KEYWAY TUBES



CODE	DESCRIPTION
AWTUBE70	KEYWAY TUBE 70MM - ALUMINIUM - 5M
AWTUBE706	KEYWAY TUBE 70MM - ALUMINIUM - 6M
AWTUBE784-OMNI	KEYWAY TUBE 78MM - ANODISED - 4M
AWTUBE786-OMNI	KEYWAY TUBE 78MM - ANODISED - 6M



# AWNING KIT

Includes all hardware needed for a gearbox awning.

One Gearbox

- Black - AWGB71B
- White - AWGB71W
- Grey - AWGB71G

One Pivot Pin & Plate Set

- AWPPSS

Four nyloc nuts for pivot pin & plate and gearbox stainless steel

- AWM6NUT

Two bolts M6 x 12mm bolt 304SS CSK socket screw

- AWM612B

Two bolts M6 x 40mm bolt 304SS CSK socket screw

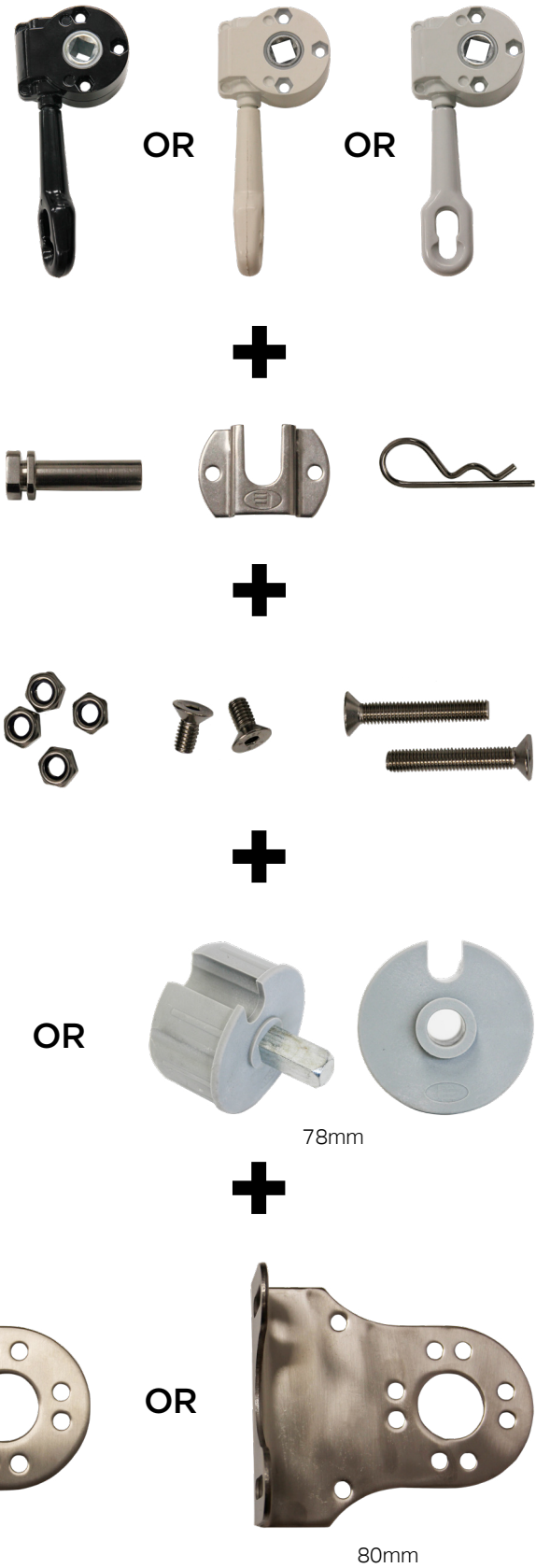
- AWM640B

One pair of Keyway Tube Ends

- 70mm Drive end AWDE70 & 70mm Idler end AWIE70
- 78mm Drive end AWDE78 & 78mm Idler end AWIE78

One set of Gearbox brackets

- 65mm AWGBBKT65SS
- 80mm AWGBBKT80SS



## 80 SERIES STAPLER



CODE	STAPLE	RANGE	DIMENSIONS (MM)	WEIGHT (KG)	OPERATING PSI	FASTENER CAPACITY
HC519	80 SERIES	3-16	215 X 39 X153	0.89	80-120	102

Heavy duty air stapler commonly used for upholstery, padding, cupboard backs, house wrapping, labelling & installation.

- Convenient Rear Exhaust: Diverts air away from the operator
- Comfortable Rubber Grip: Reduces vibrations & fatigue
- Standard Upholstery Trigger
- Easy to Load Magazine: Reduces downtime
- Solid Steel Metal Cap

## 80 SERIES ELECTRIC STAPLER

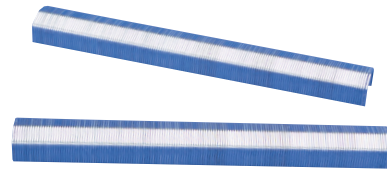


CODE	STAPLE	RANGE	DIMENSIONS (MM)	WEIGHT (KG)	SUPPLY	FASTENER CAPACITY
HC519	80 SERIES	3-16	215 X 47 X186	1.4	ELECTRIC (240V)	140

Heavy duty air stapler commonly used for upholstery, padding, cupboard backs, house wrapping, labelling & installation.

- Strong Fibreglass Reinforced Resin Body
- Rear Loading
- Airless: No compressor required
- Easily Portable
- Suitable for both soft and hard wood
- Quiet Operation
- Quick Release Nose

## STCR2115 SERIES STAPLES



CODE	SIZE
STCR2115-1/4	6.3   ¼
STCR2115-3/8	9.5   ¾

1 Case = 100 Boxes of 5000 Staples each.  
Fits B8P Stapling Plier.

## 80 SERIES STAPLES



Commonly used for upholstery, padding, cupboard backs, house wrapping, labelling and insulation.

- Crown width 12.9mm
- Wire size 0.6 x 0.95mm 21 Gauge

CODE	SIZE	FINISH	BOX QTY
86/04	4MM	GALVANISED	10,000
86/06	6MM	GALVANISED	10,000
86/08	8MM	GALVANISED	10,000
86/10	10MM	GALVANISED	10,000
86/12	12MM	GALVANISED	10,000
86/14	14MM	GALVANISED	10,000
86/04SS	4MM	STAINLESS STEEL	5,000
86/06SS	6MM	STAINLESS STEEL	5,000
86/08SS	8MM	STAINLESS STEEL	5,000
86/10SS	10MM	STAINLESS STEEL	5,000
86/12SS	12MM	STAINLESS STEEL	5,000
86/14SS	14MM	STAINLESS STEEL	5,000



NON PERMANENT – OMNICHROM

STAEDTLER

CODE	COLOUR
SSCPWTWS	WHITE
SSCPBKWS	BLACK
SSCPBLWS	BLUE
SSCPYLWS	YELLOW

Boxes of 12

Ideal for marking on Docril, Top Gun or most other fabrics including vinyl. Pencils do not contain wax and are water soluble, to remove use a moist sponge or damp fabric towel.



BLACK  
SSCPBKWS



WHITE  
SSCPWTWS

NON PERMANENT – OMNICHROM REFILL PENS

STAEDTLER

CODE	COLOUR
SSCPKIT	WHITE PEN
SSCPLW	WHITE
SSCPLBK	BLUE

12 Refills per Box

Refillable lead holder in 4 colours. Can be wiped off smooth textiles and washes out of many other textiles. No sharpening necessary.



**NOTE:** always test effectiveness of Omnichrom on a scrap piece of the exact material before use on a new project.

MARKING-OUT CHALK

H. HANCOCK

CODE	COLOUR
TCW	WHITE
TCA	ASSORTED COLOURS

Box of 50

Only available as a full box.



PERMANENT – GLASOCHROM

STAEDTLER

CODE	COLOUR
SSCPWT	WHITE
SSCPBK	BLACK
SSCPBL	BLUE

Box of 12

Water resistant, semi-permanent wax pencils deal for marking on glass, china, leather and other polished surfaces. Pencil markings are waterproof but can be easily removed with a dry cloth.



BLACK  
SSCPBK



WHITE  
SSCPWT

KNEEPADS



CODE	DESCRIPTION
HC904	1 PAIR RUBBER PADS WITH HOOK & LOOP FASTENINGS

CLOTH CLAMPS



CODE	JAW OPENING MM   IN	OVERALL LENGTH MM   IN
HC515R	25   1	102   4
HC516R	51   2	152   6
HC517R	76   3	229   9

SEAM RIPPER



CODE	DESCRIPTION
HC906	DELUXE QUALITY

AWLS



STANDARD  
HC901

HEAVY DUTY  
HC900

CODE	DESCRIPTION	LENGTH MM   IN	PACK QTY
HC901	STANDARD	100   4	20
HC900	HEAVY DUTY	130   5 ½	12

STAPLING PLIER

Special stapling plier with high raised clincher for stapling around bolt ropes or rolled up material.



CODE	DESCRIPTION
B8P	RAISED CLINCH STAPLE PLIERS

STAPLE REMOVER



CODE	DESCRIPTION
HC519	METAL PUSH-TYPE STAPLER

UPHOLSTERY SKEWERS



CODE	SIZE	LENGTH	GAUGE
UPSK75	8	75MM	16
UPSK87	10	87.5MM	16

## TERMS & CONDITIONS

1. Definitions
  - 1.1 "Seller" shall mean QCD Limited and its successors and assigns.
  - 1.2 "Customer" shall mean the Customer or any person acting on behalf of and with the authority of the Customer.
  - 1.3 "Guarantor" means that person (or persons), or entity that agrees herein to be liable for the debts of the Customer on a principal debtor basis.
  - 1.4 "Goods" shall have the same meaning as in section 119 of the Contract and Commercial Law Act 2017 and are goods supplied by the Seller to the Customer (and where the context so permits shall include any supply of Services as hereinafter defined).
  - 1.5 "Services" shall mean all services supplied by the Seller to the Customer and includes any advice or recommendations (and where the context so permits shall include any supply of Goods as defined above).
  - 1.6 "Price" shall mean the cost of the Goods as agreed between the Seller and the Customer subject to clause 4 of this contract.
2. Acceptance
  - 2.1 Any instructions received by the Seller from the Customer for the supply of Goods and/or the Customer's acceptance of Goods supplied by the Seller shall constitute acceptance of the terms and conditions contained herein.
  - 2.2 Where more than one Customer has entered into this agreement, the Customers shall be jointly and severally liable for all payments of the Price.
  - 2.3 Upon acceptance of these terms and conditions by the Customer the terms and conditions are irrevocable and can only be rescinded in accordance with these terms and conditions or with the written consent of the manager of the Seller.
  - 2.4 None of the Seller's agents or representatives are authorised to make any representations, statements, conditions or agreements not expressed by the manager of the Seller in writing nor is the Seller bound by any such unauthorised statements.
  - 2.5 The parties agree that for the purposes of the Construction Contracts Act 2002 together with any amendments to the Construction Contracts Act 2022 this contract is not a commercial construction contract or a construction contract whether for a commercial or residential property or work and devise liability under this contract shall be in no way limited by any contract that the Customer may have entered into with a third party in relation to the supply of Goods and/or Services to that third party or the payment by the third party to the Customer of any monies whether by progress payments or otherwise.
3. Goods / Services
  - 3.1 The Goods and/or Services are as described on the invoices, quotation, work authorisation or any other work commencement forms as provided by the Seller to the Customer.
  - 3.2 Any credit limit approved by the Seller may be reviewed by the Seller from time to time at its sole discretion. The credit limit may be increased or reduced by the Seller following the review without the need to give notice to the customer for the increase or reduction.
4. Price And Payment
  - 4.1 At the Seller's sole discretion the Price shall be either;
    - (a) as indicated on invoices provided by the Seller to the Customer in respect of Goods supplied; or
    - (b) the Seller's current Price, at the date of delivery of the Goods, according to the Seller's current Price list; or
    - (c) Seller's quoted Price (subject to clause 4.2) which shall be binding upon the Seller provided that the Customer shall accept in writing the Seller's quotation within thirty (30) days.
  - 4.2 The Seller may by giving notice to the Customer (verbally or otherwise) at any time before delivery increase the Price of the Goods to reflect any variation from the plan of scheduled works or specifications beyond the reasonable control of the Seller which increase the cost of the Goods/Services by more than 10% of the quoted Price.
  - 4.3 At the Seller's sole discretion a deposit may be required. The deposit amount or percentage of the Price will be stipulated at the time of the order of the Goods and shall become immediately due and payable.
  - 4.4 Time for payment for the Goods shall be of the essence and will be stated on the invoice, quotation or any other order forms. If no time is stated then payment shall be on delivery of the Goods.
  - 4.5 The Seller may withhold delivery of the Goods until the Customer has paid for them, in which event payment shall be made before the delivery date.
  - 4.6 At the Seller's sole discretion, payment for approved Customer's shall be due on the twentieth (20th) of the month in which a statement is posted to the Customer's address or address for notices.
  - 4.7 At the Seller's sole discretion, for certain approved Customers payment will be due seven (7) days following the date of the invoice.
  - 4.8 Payment will be made by cash on delivery, or by cheque, or by bank cheque, or by direct credit, or by credit card, or by any other method as agreed to between the Customer and the Seller.
  - 4.9 The Price shall be increased by the amount of any GST and other taxes and duties which may be applicable, except to the extent that such taxes are expressly included in any quotation given by the Seller.
  - 4.10 The Seller will charge a 2.5% premium for all payments made by credit card or by contactless credit or debit card payment systems such as "Paywave".
5. Delivery Of Goods
  - 5.1 Delivery of the Goods shall be made to the Customer's address. The Customer shall make all arrangements necessary to take delivery of the Goods whenever they are tendered for delivery.
  - 5.2 The costs of carriage and any insurance which the Customer reasonably directs the Seller to incur, shall be reimbursed by the Customer (without any set-off or other withholding whatever) and shall be due on the date for payment of the Price. The

- carrier shall be deemed to be the Customer's agent.
- 5.3 The Seller may deliver the Goods by separate instalments (in accordance with the agreed delivery schedule). Each separate instalment shall be invoiced and paid for in accordance with the provisions in this contract of sale.
- 5.4 Delivery of the Goods to a third party nominated by the Customer is deemed to be delivery to the Customer for the purposes of this agreement.
- 5.5 The Customer shall take delivery of the Goods tendered notwithstanding that the quantity so delivered shall be either greater or less than the quantity purchased provided that:
  - (a) such discrepancy in quantity shall not exceed 5%, and
  - (b) the Price shall be adjusted pro rata to the discrepancy.
- 5.6 The failure of the Seller to deliver shall not entitle either party to treat this contract as repudiated.
- 5.7 The Seller shall not be liable for any loss or damage whatever due to failure by the Seller to deliver the Goods (or any of them) promptly or at all.
6. Risk
  - 6.1 If the Seller retains title to the Goods nonetheless all risk for the Goods passes to the Customer on delivery.
  - 6.2 If any of the Goods are damaged or destroyed prior to title to them passing to the Customer, the Seller is entitled, without prejudice to any of its other rights or remedies under these terms and conditions (including the right to receive payment of the balance of the Price for the Goods), to receive all insurance proceeds payable in respect of the Goods. This applies whether or not the Price has become payable under these terms and conditions. The production of these terms and conditions by the Seller is sufficient evidence of the Seller's rights to receive the insurance proceeds without the need for any person dealing with the Seller to make further enquiries.
7. Defects/Returns
  - 7.1 The Customer shall inspect the Goods on delivery and shall within seven (7) days subject to any mandatory provisions under the Consumer Guarantees Act 1993 of delivery notify the Seller of any alleged defect, shortage in quantity, damage or failure to comply with the description or quote. The Customer shall afford the Seller an opportunity to inspect the Goods within a reasonable time following delivery if the Customer believes the Goods are defective in any way. If the Customer shall fail to comply with these provisions the Goods shall be conclusively presumed to be in accordance with the terms and conditions and free from any defect or damage.
  - 7.2 For defective Goods, which the Seller has agreed in writing that the Customer is entitled to reject, the Seller's liability is limited to either (at the Seller's discretion) replacing the Goods or repairing the Goods provided that:
    - (a) the Customer has complied with the provisions of clause 7.1;
    - (b) the Goods are returned at the Customer's cost within fourteen (14) days of the delivery date;
    - (c) the Seller will not be liable for Goods which have not been stored or used in a proper manner;
    - (d) the Goods are returned in the condition in which they were delivered and with all packaging material, brochures and instruction material in as new condition as is reasonably possible in the circumstances.
  - 7.3 The Seller may (in its discretion) accept the Goods for credit but this may incur a handling fee of 15% of the value of the returned Goods plus any freight or \$100.00 which ever is the greater of.
  - 7.4 Goods returned for credit must be returned within 14 days of purchase, are subject to approval, and incur a restocking fee being the greater of 15% of invoice value or \$100. Custom items manufactured or cut to length are non-refundable. In the event of a claim the seller liability is restricted to the invoice price only. Title of goods supplied shall not pass to the Customer until full payment is received.
8. Warranty
  - 8.1 For Goods not manufactured by the Seller, the warranty shall be the current warranty provided by the manufacturer of the Goods. The Seller shall not be bound by nor responsible for any term, condition, representation or warranty given by the manufacturer of the Goods.
9. Default & Consequences Of Default
  - 9.1 Interest on overdue invoices shall accrue from the date when payment becomes due daily until the date of payment at a rate of 2.5% compounding per calendar month and shall accrue at such a rate after as well as before any judgement.
  - 9.2 If the Customer defaults in payment of any invoice when due, the Customer shall indemnify the Seller from and against all of the Seller's costs and disbursements including on a solicitor and own client basis and in addition all of the Seller's nominees costs of collection.
  - 9.3 Without prejudice to any other remedies the Seller may have, if at any time the Customer is in breach of any obligation (including those relating to payment), the Seller may suspend or terminate the supply of Goods to the Customer and any of its other obligations under the terms and conditions. The Seller will not be liable to the Customer for any loss or damage the Customer suffers because the Seller exercised its rights under this clause.
  - 9.4 If any account remains unpaid at the end of the second month after supply of the Goods or Services the following shall apply: An immediate amount of the greater of \$20.00 or 10.00% of the amount overdue shall be levied for administration fees which sum shall become immediately due and payable in addition to the interest payable under clause 9.1 hereof.
  - 9.5 In the event that:
    - (a) any money payable to the Seller becomes overdue, or in the Seller's opinion the Customer will be unable to meet its payments as they fall due, or;
    - (b) the Customer becomes insolvent, convenes a meeting with its creditors or proposes or enters into an arrangement with creditors, or makes an assignment for the benefit of its creditors, or;
    - (c) a receiver, manager, liquidator (provisional or otherwise) or similar

person is appointed in respect of the Customer or any asset of the Customer, then without prejudice to the Seller's other remedies at law:

- (i) the Seller shall be entitled to cancel all or any part of any order of the Customer which remains unperformed in addition to and without prejudice to any other remedies; and
- (ii) all amounts owing to the Seller shall, whether or not due for payment, immediately become due and payable.

10. Title
- 10.1 It is the intention of the Seller and agreed by the Customer that property in the Goods shall not pass until:
- (a) The Customer has paid all amounts owing for the particular Goods, and
  - (b) The Customer has met all other obligations due by the Customer to the Seller in respect of all contracts between the Seller and the Customer, and that the Goods, or proceeds of the sale of the Goods, shall be kept separate until the Seller shall have received payment and all other obligations of the Customer are met.
- 10.2 Receipt by the Seller of any form of payment other than cash shall not be deemed to be payment until that form of payment has been honoured, cleared or recognised and until then the Seller's ownership of rights in respect of the Goods shall continue.
- 10.3 It is further agreed that:
- (a) Until such time as ownership of the Goods shall pass from the Seller to the Customer the Seller may give notice in writing to the Customer to return the Goods or any of them to the Seller. Upon such notice the rights of the Customer to obtain ownership or any other interest in the Goods shall cease.
  - (b) If the Customer fails to return the Goods to the Seller then the Seller or the Seller's agent may enter upon and into land and premises owned, occupied or used by the Customer, or any premises as the invitee of the Customer, where the Goods are situated and take possession of the Goods, without being responsible for any damage thereby caused.

11. Personal Property Securities Act 1999
- 11.1 Upon assenting to these terms and conditions in writing the Customer acknowledges and agrees that:
- (a) these terms and conditions constitute a security agreement for the purposes of the PPSA; and
  - (b) a security interest is taken in all Goods previously supplied by the Seller to the Customer (if any) and all Goods that will be supplied in the future by the Seller to the Customer during the continuance of the parties relationship.
- 11.2 The Customer undertakes to:
- (a) sign any further documents and/or provide any further information, such information to be complete, accurate and up-to-date in all respects, which the Seller may reasonably require to register a financing statement or financing change statement on the Personal Property Securities Register;
  - (b) indemnify, and upon demand reimburse, the Seller for all expenses incurred in registering a financing statement or financing change statement on the Personal Property Securities Register or releasing any Goods charged thereby;
  - (c) not register a financing change statement or a change demand without the prior written consent of the Seller;
  - (d) give the Seller not less than fourteen (14) days prior written notice of any proposed change in the Customer's name and/or any other change in the Customer's details (including but not limited to, changes in the Customer's address, facsimile number, or business practice); and
  - (e) immediately advise the Seller of any material change in its business practices of selling the Goods which would result in a change in the nature of proceeds derived from such sales.
- 11.3 The Seller and the Customer agree that nothing in sections 114(1)(a), 133 and 134 of the PPSA shall apply to these Terms and Conditions.
- 11.4 The Customer waives its rights as a debtor under sections 116, 120(2), 121, 125, 126, 127, 129, 131 and 132 of the PPSA.
- 11.5 Unless otherwise agreed to in writing by the Seller, the Customer waives its right to receive a verification statement in accordance with section 148 of the PPSA.
- 11.6 The Customer unconditionally ratifies any actions taken by the Seller under clauses 11.1 to 11.5. under and by virtue of the power of attorney given by the Customer to the Seller.

12. Security & Charge
- 12.1 Despite anything to the contrary contained herein or any other rights which the Seller may have howsoever:
- (a) Where the Customer and/or the Guarantor (if any) is the owner of land, realty or any other asset capable of being charged, both the Customer and/or the Guarantor agree to mortgage and/or charge all of their joint and/or several interest in the said land, realty or any other asset to the Seller or the Seller's nominee to secure all amounts and other monetary obligations payable under the terms and conditions. The Customer and/or the Guarantor acknowledge and agree that the Seller (or the Seller's nominee) shall be entitled to lodge where appropriate a caveat, which caveat shall be released once all payments and other monetary obligations payable hereunder have been met.
  - (b) Should the Seller elect to proceed in any manner in accordance with this clause and/or its sub-clauses, the Customer and/or Guarantor shall indemnify the Seller from and against all the Seller's costs and disbursements including legal costs on a solicitor and own client basis.
  - (c) To give effect to the provisions of clause [11, 12.1(a) to (b)] inclusive hereof the Customer and/or the Guarantor (if any) do hereby irrevocably nominate constitute and appoint the Seller or the Seller's nominee as the Customer's and/or Guarantor's true and lawful attorney to execute mortgages and charges (whether registrable or not) including such other terms and conditions as the Seller and/or the Seller's nominee shall think fit in his/her/its/their absolute discretion against the joint and/or several interest of the Customer and/or the Guarantor in any land, realty

or asset in favour of the Seller and in the Customer's and/or Guarantor's name as may be necessary to secure the said Customer's and/or Guarantor's obligations and indebtedness to the Seller and further to do and perform all necessary and other acts including instituting any necessary legal proceedings, and further to execute all or any documents in the Seller's absolute discretion which may be necessary or advantageous to give effect to the provisions of this clause.

13. Intellectual property
- 13.1 Where the Seller has designed or drawn Goods for the Customer, then the copyright in those designs and drawings shall remain vested in the Seller, and shall only be used by the Customer at the Seller's discretion.
- 13.2 The Customer warrants that all designs or instructions to the Seller will not cause the Seller to infringe any patent, registered design or trademark in the execution of the Customer's order.
14. Cancellation
- 14.1 The Seller may cancel these terms and conditions or cancel delivery of Goods and Services at any time before the Goods are delivered by giving written notice. On giving such notice the Seller shall promptly repay to the Customer any sums paid in respect of the Price for those Goods. The Seller shall not be liable for any loss or damage whatsoever arising from such cancellation.
- 14.2 At the Seller's sole discretion the Customer may cancel delivery of Goods and/or Services. In the event that the Customer cancels delivery of Goods and/or Services the Customer shall be liable for any costs incurred by the Seller up to the time of cancellation.
15. Privacy Act 2020
- 15.1 The Customer and the Guarantor/s (if separate to the Customer) authorises the Seller to:
- (a) collect, retain and use any information about the Customer, for the purpose of assessing the Customer's creditworthiness or marketing products and services; and
  - (b) to disclose information about the Customer, whether collected by the Seller from the Customer directly or obtained by the Seller from any other source, to any other credit provider or any credit reporting agency for the purposes of providing or obtaining a credit reference, debt collection or notifying a default by the Customer.
- 15.2 Where the Customer is a natural person the authorities under clause 15.1 are authorities or consents for the purposes of the Privacy Act 2020.
- 15.3 The Customer shall have the right to request the Seller for a copy of the information about the Customer retained by the Seller and the right to request the Seller to correct any incorrect information about the Customer held by the Seller.
16. Customer's Disclaimer
- 16.1 The Customer hereby disclaims any right to rescind, or cancel the contract or to sue for damages or to claim restitution arising out of any misrepresentation made to him by any servant or agent of the Seller and the Customer acknowledges that he buys the Goods relying solely upon his own skill and judgement.
18. Unpaid Seller's Rights To Dispose Of Goods
- 18.1 In the event that:
- (a) the Seller retains possession or control of the Goods; and
  - (b) payment of the Price is due to the Seller; and
  - (c) the Seller has made demand in writing of the Customer for payment of the Price in terms of this contract; and
  - (d) the Seller has not received the Price of the Goods,
- then, whether the title in the Goods has passed to the Customer or has remained with the Seller, the Seller may dispose of the Goods and may claim from the Customer the loss to the Seller on such disposal.
19. Consumer Guarantees Act 1993
- 19.1 This agreement is subject to the provisions of the Consumer Guarantees Act 1993 in all cases except where the Customer is contracting within the terms of a trade/business (which cases are specifically excluded).
20. General
- 20.1 If any provision of these terms and conditions shall be invalid, void or illegal or unenforceable the validity existence, legality and enforceability of the remaining provisions shall not be affected, prejudiced or impaired.
- 20.2 All Goods and Services supplied by the Seller are supplied subject to the laws of New Zealand and the Seller takes no responsibility for changes in the law that affect the Goods or Services supplied.
- 20.3 The Seller shall be under no liability whatsoever to the Customer for any indirect loss and/or expense (including loss of profit) suffered by the Customer arising out of a breach by the Seller of these terms and conditions.
- 20.4 In the event of any breach of this contract by the Seller the remedies of the Customer shall be limited to damages. Under no circumstances shall the liability of the Seller exceed the Price of the Goods.
- 20.5 Neither party shall be liable for any default due to any act of God, terrorism, war, strike, lock out, industrial action, flood, storm or other event beyond the reasonable control of either party.
- 20.6 The Customer shall not set off against the Price amounts due from the Seller.
- 20.7 The Seller may license or sub-contract all or any part of its rights and obligations without the Customer's consent.
- 20.8 The Seller reserves the right to review these terms and conditions at any time and from time to time. If, following any such review, there is to be any change in such terms and conditions, that change will take effect from the date on which the Seller notifies the Customer of such change.





qcd.co.nz