



**Specialised  
Fabric  
Solutions**

**PRODUCT  
CATALOGUE  
2024**

**—**

**TEXTILES**

# QCD LIMITED

## Specialised Fabric Solutions

**Nature is demanding, so we demand a lot from our textiles.**

Whether providing much-needed shade for a sun-baked terrace or sailing a yacht around the world, you need to know your fabric systems are up to the challenge. QCD has been supplying customers in the commercial, residential and marine markets for over 60 years. With a huge range of specialised textiles and hardware sourced from around the world, our team can help you specify and deliver a solution that works.

The wind, UV rays and ocean spray can do their worst. Relax, because you're covered.

TO PLACE AN ORDER OR FOR  
PRODUCT ENQUIRIES

## CONTACT US

### **North Island**

#### **Office & Warehouse**

373D Neilson Street, Penrose,  
Auckland, 1061  
New Zealand  
09 815 7500  
[sales@qcd.co.nz](mailto:sales@qcd.co.nz)

### **South Island**

#### **Office & Warehouse**

24 Disraeli Street, Addington  
Christchurch, 8024  
New Zealand  
03 384 9329  
[chchsales@qcd.co.nz](mailto:chchsales@qcd.co.nz)

[qcd.co.nz](http://qcd.co.nz)



# TEXTILES

## CONTENTS

SHADE	4
MARINE	22
MESH	26
POLYFABRICS	28
AUTOMOTIVE	38
WOOL	41
FOAM	42
NYLON	43

# SHADEVIEW MESH





# SHADEVIEW URBAN

## 2X2 CONSTRUCTION

CODE	WIDTH - CM	ROLL LENGTH - M	WEIGHT - GSM
SV300	300	25	570

Shadeview Urban is a multifunctional fabric for external shading ideally suited to straight drop alfresco blinds and awnings, with a 3 metre width allowing for a join free blind. It is a great alternative for those considering PVC alfresco blinds as it offers effective protection from the elements all year around. Shadeview Urban is also highly suited to those harsh west facing windows that need the extra protection that only a 5% openness fabric can deliver.

### PRODUCT FEATURES

- 5% Openness
  - 2 x 2 construction
  - Reduces up to 95% of the sun's harmful rays
  - Optimal ventilation and air flow
  - High quality, UV resistant construction
  - Reduces cooling costs
  - Mildew resistant
- Provides shade and privacy
  - Fire retardant additives
  - Weldable
  - Controls reflected glare
  - 10 year warranty for screens
  - 5 year warranty for shade sail (horizontal application)



2X2 CONSTRUCTION – FLINT



# SHADEVIEW EXTREME

BROKEN TWILL CONSTRUCTION

CODE	WIDTH - CM	ROLL LENGTH - M	WEIGHT - GSM
SVX320	320	20	560

As the name suggests this outdoor fabric has gone to the extreme. This unique fabric has been developed to provide you with clarity and protection from the elements. Black mesh is easier to see through, however black doesn't complement all exterior colour ranges. Shadeview Extreme is a fabric that has been designed with this in mind with one side black for clarity and view and the other side in a range of fashion colours to suit your home. Shadeview Extreme can combat the environments harsh elements through its unique broken twill weave, giving it greater attributes than any other mesh on the market, while still providing quality and style.

## PRODUCT FEATURES

- 3% Openness
  - Broken twill construction
  - Reduces up to 97% of the sun's harmful rays
  - Minimal ventilation and air flow
  - High quality, UV resistant construction
  - Dual colour
- Mildew resistant
  - Fire retardant additives
  - Weldable
  - Controls reflected glare
  - 10 year warranty for screens
  - 5 year warranty for shade sail (horizontal application)



BROKEN TWILL CONSTRUCTION      FRONT | BACK

# SHADEVIEW CLASSIC

## 1X1 CONSTRUCTION

CODE	WIDTH - CM	ROLL LENGTH - M	WEIGHT - GSM
SV305	305	25	550

Shadeview Classic has a unique woven design that will shade your home, office or entertaining area whilst retaining a high level of visibility. Shadeview Classic can be railroaded for the ultimate blind or awning with no vertical joins. Enjoy letting the light and cool air into your home whilst filtering out up to 90% of the sun's damaging ultra violet rays. Shadeview Classic is ideally suited for external awnings, alfresco blinds and shade sails.

### PRODUCT FEATURES

- 10% Openness
- 1x1 Construction
- Reduces up to 90% of the sun's harmful rays
- Optimal ventilation and air flow
- High quality, UV resistant construction
- Mildew resistant
- Fire retardant additives
- Weldable
- Controls reflected glare
- Railroad
- 10 year warranty for screens
- 5 year warranty for shade sail (horizontal application)



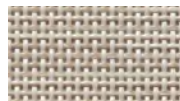
**SNOWCAP**  
SV305SNOWCAP



**WHEAT**  
SV305WHEAT



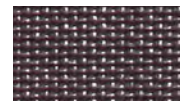
**DUSK**  
SV305DUSK



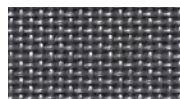
**DESERT**  
SV305DESERT



**BEIGE**  
SV305BEIGE



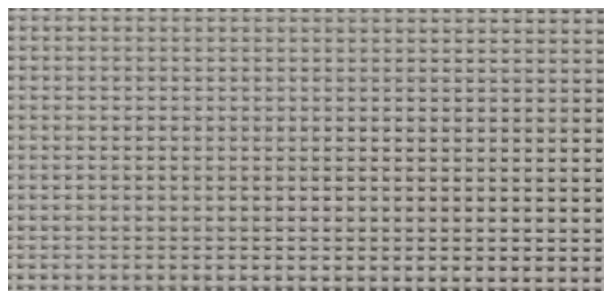
**CHOCOLATE**  
SV305CHOC



**SLATE**  
SV305SLATE



**BLACK**  
SV305BLACK



1X1 CONSTRUCTION

# SHADEVIEW ONE

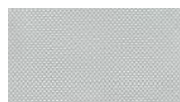
## 2X2 CONSTRUCTION

CODE	WIDTH - CM	ROLL LENGTH - M	WEIGHT - GSM
SVU300	300	25	615

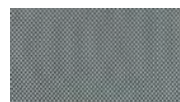
The 1% openness of Shadeview One ensures optimal shielding from the elements while preserving scenic vistas, making it perfect for alfresco blinds, awnings, or shading your entertainment area. Filter out up to 99% of harmful UV rays, creating a serene ambiance while enjoying superior sun protection. Built to last, Shadeview One's durable construction guarantees longevity and performance.



COAL DUST



**LIMESTONE**  
SVONE300LIMESTONE



**BOULDER**  
SVONE300BOULDER



**GUNMETAL**  
SVONE300GUNMETAL



**COAL DUST**  
SVONE300COALDUST



**MIDNIGHT**  
SVONE300MIDNIGHT

### PRODUCT FEATURES

- 1% Openness
- 70% PVC, 30% Polyester
- Reduces up to 99% of the sun's harmful rays
- Optimal ventilation and air flow
- High quality, UV resistant construction
- Reduces cooling costs
- Mildew resistant
- Provides shade and privacy
- Fire retardant additives
- Weldable
- Controls reflected glare
- 10 year warranty for screens
- 5 year warranty for shade sail (horizontal application)

# SOLTIS BY SERGE FERRARI



# SOLTIS HORIZON 86

SERGE FERRARI

CODE	WIDTH - CM	ROLL LENGTH - M	WEIGHT - GSM
SF86	267	40	380
SF86	177	40	380 <b>INDENT</b>

Soltis Horizon 86 provides excellent outward visual contact and promotes natural light intake. This is beneficial and assists energy savings by reducing artificial lighting. It can be used for external & skylight blinds, Conservatories as well as Shadesails, and has excellent characteristics in tension screens.

## PRODUCT FEATURES

- 10 year warranty for screens
- 5 year warranty for shade sail (horizontal application)
- 14% openness factor
- Mildew resistant
- Fire retardant
- Up to 30% solar transmission
- Weldable
- Good balance for the lowest exposed facades of the building
- Lightweight, durable and 100% recyclable
- High dimensional stability due to Précontraint® technology



CHAMPAGNE



**WHITE**  
SF86-2044



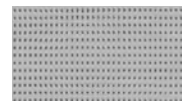
**CHAMPAGNE**  
SF86-2175



**SANDY BEIGE**  
SF86-2135



**BOULDER**  
SF86-2171



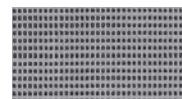
**ALU/WHITE**  
SF86-2051



**ALU/OAT**  
SF86-2046



**ALU/ALU**  
SF86-2048



**BEATEN METAL**  
SF86-2045



**CONCRETE**  
SF86-2167



**PEPPER**  
SF86-2012



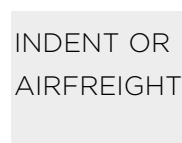
**ANTHRACITE**  
SF86-2047



**BLACK**  
SF86-2053



**BRONZE**  
SF86-2043



**INDENT OR  
AIRFREIGHT**



**BUTTERCUP**  
SF86-2166 177CM



**ORANGE**  
SF86-8204 177CM



**CARAMEL**  
SF86-50261 177CM



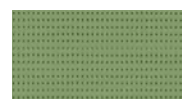
**RED**  
SF86-8255 177CM



**MUSCAT**  
SF86-50260 177CM



**BAMBOO**  
SF86-50333 177CM



**MOSS GREEN**  
SF86-2158 177CM

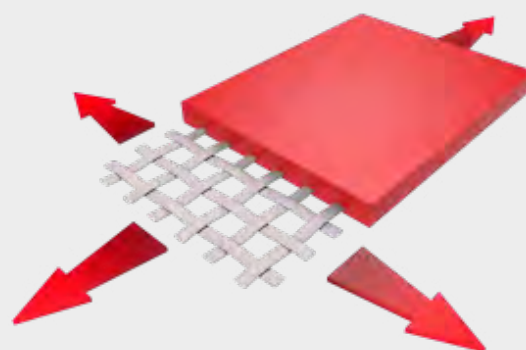


**MIDNIGHT BLUE**  
SF86-2161 177CM

## Précontraint Technology

Through Précontraint, Serge Ferrari produces flexible composite materials, using a high-tenacity polyester base cloth. By keeping both warp and weft under tension throughout the entire production cycle the result is an outstandingly smooth surface.

This tense grid allows for the application of a thick, smooth solar protective coating and a dirt-resistant surface treatment resulting in a dimensionally stable, light, thin yet super strong material that is easy to clean, retains its shape and provides superior heat protection.





# SOLTIS LOUNGE 96

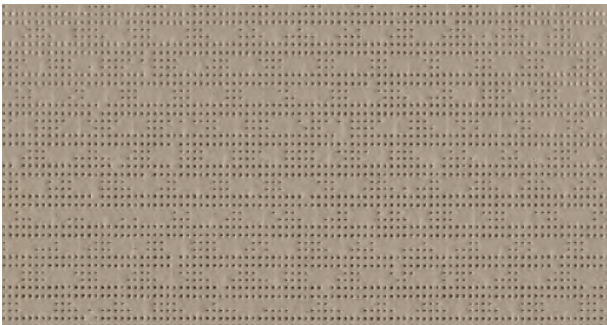
SERGE FERRARI

CODE	WIDTH - CM	ROLL LENGTH - M	WEIGHT - GSM
SF96	267	40	400

Soltis Lounge 96 is optimised screen for terraces and creates a comfortable ambience for outdoor living spaces when applied as a retractable arm awning. Other uses include external blinds, Pergolas, Shadesails and Projection blinds.

## PRODUCT FEATURES

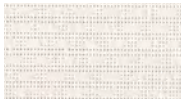
- 10 year warranty for screens
  - 5 year warranty for shade sails (horizontal application)
  - Up to 21% solar transmission
  - All colours available in wide width
- 4% Openness factor
  - Lightweight, durable and 100% recyclable
  - Easy to clean
  - Mildew resistant
  - Fire retardant
  - Weldable



TAUPE



WHITE  
SF96-8102



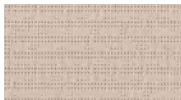
SHEA  
SF96-50843



OFF WHITE  
SF96-1103



VANILLA  
SF96-8861



SANDY BEIGE  
SF96-2135



CLOUD  
SF96-50272



BOULDER  
SF96-2171



TAUPE  
SF96-50850



BRONZE  
SF96-2043



PLATINUM  
SF96-50844



ANTHRACITE  
SF96-2047



BLACK  
SF96-8450



CITRUS  
SF96-50846



LIME  
SF96-50848



JUNGLE  
SF96-50849



AUREOLIN  
SF96-50845



CARAMEL  
SF96-50261



RED  
SF96-8255



ACAPULCO  
SF96-50847



ATLANTIS  
SF96-50851



MIDNIGHT BLUE  
SF96-2161



# SOLTIS PROOF W96

SERGE FERRARI

CODE	WIDTH - CM	ROLL LENGTH - M	WEIGHT - GSM
SFW96	267	35	620

A smart material that protects from heat and rain while preserving natural light, ideal for pergolas, Shadesails, projection blinds and fixed awnings.

## PRODUCT FEATURES

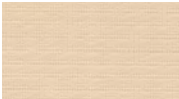
- 10 year warranty for screens
  - 5 year warranty for shade sails (horizontal application)
  - Up to 17% solar transmission
  - Transparent textured aspect
  - Combines impermeability and luminosity
  - Heat and weather protection
- Easy maintenance
  - High colourfastness to UV radiations
  - Lightweight, durable and 100% recyclable
  - High dimensional stability due to Precontraint® technology
  - Mildew resistant
  - Fire retardant
  - Weldable



WHITE  
SFW96-8102



OFF WHITE  
SFW96-1103



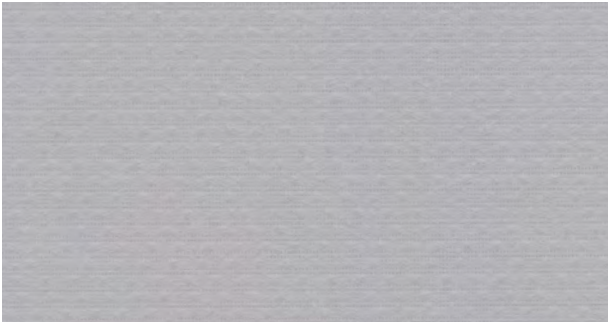
VANILLA  
SFW96-8861



CLOUD  
SFW96-2171



ANTHRACITE  
SFW96-2074



CLOUD  
SFW96-2171



# SOLTIS PROOF 502

SERGE FERRARI

CODE	WIDTH - CM	ROLL LENGTH - M	WEIGHT - GSM
SF502V2	180	40	570

A highly resistant membrane designed to last over the years. It protects against bad weather and UV. This waterproof fabric, available in 40 colours, affords creative freedom. Applications include shade sails, fixed awnings, pergolas, projection blinds.

## PRODUCT FEATURES



- Fire Rated A51530.2
  - High dimensional stability due to Precontraint® technology
  - Satin finish
  - PVDF weldable
- Reinforced dirt resistance and easy cleanability
  - Heat and weather protection
  - 10 year warranty



MARINE  
SF502V2-1125C

					
WHITE SF502V2-8102C	BOULDER SF502V2-2171C	CONCRETE SF502V2-2167C	BLACK SF502V2-8450C	CHAMPAGNE SF502V2-8341C	VANILLA SF502V2-8861C
					
HEMP SF502V2-50265C	SANDY BEIGE SF502V2-2135C	PEPPER SF502V2-2012C	CAMEL SF502V2-2141C	COCOA SF502V2-2148C	TEAK SF502V2-50669C
					
WALNUT STAIN SF502V2-2137C	LEMON SF502V2-50574C	BUTTERCUP SF502V2-2166C	DIJON SF502V2-50571C	ORANGE SF502V2-8204C	CARROT SF502V2-2172C
					
RASPBERRY SF502V2-2150C	POPPY SF502V2-8255C	TERRACOTTA SF502V2-20185C	BURGUNDY SF502V2-8284C	ANISEED SF502V2-2157C	OLIVE SF502V2-50668C
					
MOSS GREEN SF502V2-2158C	PORCELAIN SF502V2-50670C	TENNIS GREEN SF502V2-8056C	SPRUCE SF502V2-2156C	CELADON SF502V2-50675C	STEEL BLUE SF502V2-506676C
					
LAGOON SF502V2-2160C	DARK BLUE SF502V2-50673C	THISTLE BLUE SF502V2-50270C	CELESTIAL BLUE SF502V2-50672C	VICTORIA BLUE SF502V2-50677C	MIDNIGHT BLUE SF502V2-2161C
					
MARINE SF502V2-1125C					

METALLIC COLOURS

		
VELVET RED SF502V2-2152C	AUTUMN SF502V2-2138C	ALUMINIUM SF502V2-2168C

# COMMERCIAL SHADE BY GALE PACIFIC





# COMMERCIAL DUALSHADE 350

GALE PACIFIC

CODE	WIDTH - CM	ROLL LENGTH - M	WEIGHT - GSM
GALED350	300	40	350
GALED350FR	300	40	350 INDENT

DualShade 350 is made using a patent pending knit pattern and features a single colour on one side and complementary colour on the opposite side.

Maximum durability and superior dimensional stability are achieved through a proprietary knit pattern, and DualShade 350 is backed by a full 10-year warranty against UV degradation.

## PRODUCT FEATURES

- Patent pending dual colour knit pattern creates a high performing fabric with a unique aesthetic
  - Dimensionally stable fabric reduces retensioning frequency and associated maintenance costs, resulting in longer fabric life and improved performance
  - Ideal for sun protection offering up to 93.6% UV Block
- Maximum durability achieved through use of high quality, UV-stabilised, monofilament and tape yarns joined by a lock-stitch knit pattern
  - Superior long-term performance achieved through an even distribution of force across the tensioned fabric
  - Available in FR on Indent
  - 10 year warranty



SAVANNA  
GALED350-SVNA



GOLD RUSH  
GALED350-GLDR



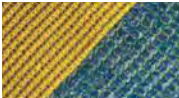
COBBLESTONE  
GALED350-CBLS



CAPRI  
GALED350-CPRI



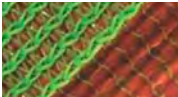
SANTORINI  
GALED350-STNI



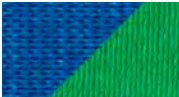
MACAW  
GALED350-MACW



SUNBURST  
GALED350-SUNB



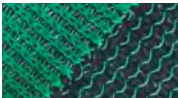
CITRUS  
GALED350-CTRS



TOPAZ  
GALED350-TPAZ



CHAMELEON  
GALED350-CMLN



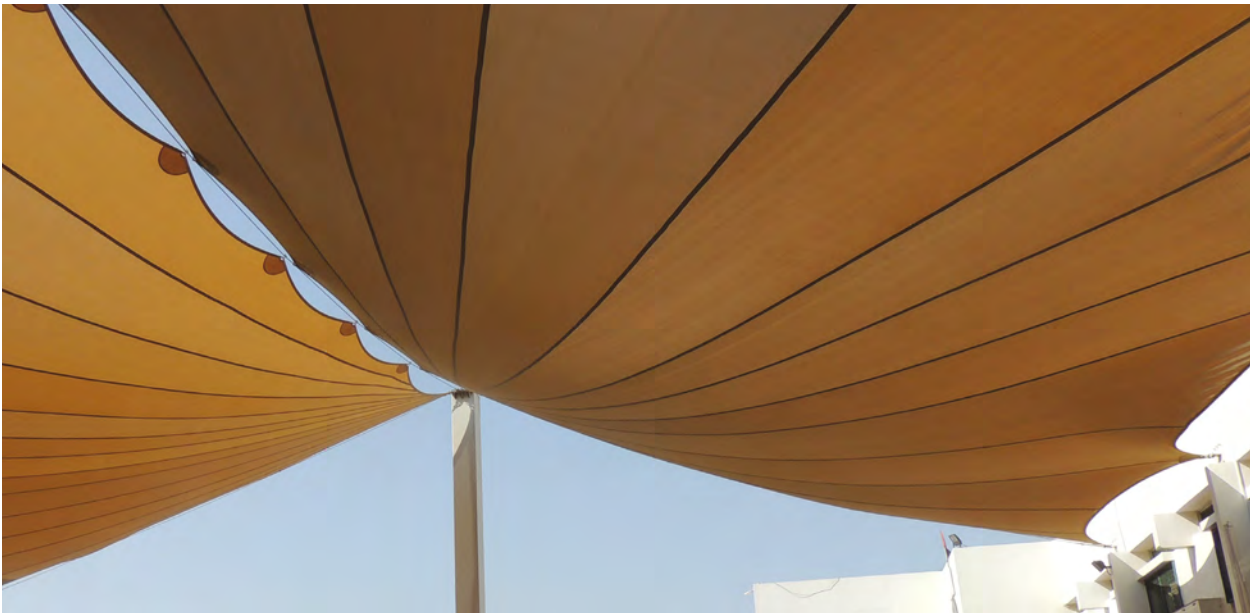
AMAZONIA  
GALED350-AMZN



MALDIVES  
GALED350-MLDV



DUAL COLOUR KNIT PATTERN — CAPRI



# COMMERCIAL HEAVY 430


GALE PACIFIC

CODE	WIDTH - CM	ROLL LENGTH - M	WEIGHT - GSM
GALECOMHV	300	40	430
GALECOMHVFR	300	40	430 INDENT

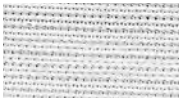
Commercial Heavy 430 architectural shade fabric was engineered specifically to withstand extreme weather conditions on large scale tension structures. It features superior biaxial strength and load bearing performance for optimum shape and tensioning endurance. Made from 100% round monofilament and designed using a patented intertwining knit pattern.

## PRODUCT FEATURES


- 100% Lead and Phthalate free for a healthier environment
  - Full 15 year warranty against UV degradation on fabric
  - UV block range from 85.9% to 87.9%
  - Engineered in Australia to meet harsh weather extremes 100% round monofilament yarn for optimal structural stability
  - 100% recyclable
- Available in FR on Indent
  - Patented intertwining knit pattern resulting in superior biaxial performance
  - Uniform balance across the warp and weft for easy fabrication and minimal maintenance
  - Stentered (heat set) for prevention of shrinking and ease of fabrication
  - Greenguard® and Oeko-Tex® certified



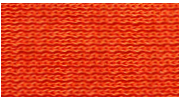
**WHITE**  
GALECOMHV-WHT




**NATURAL**  
GALECOMHV-NAT



**YELLOW**  
GALECOMHV-YEL



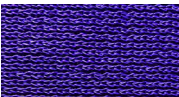
**ORANGE**  
GALECOMHV-ORA



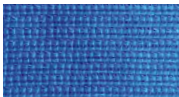
**RED**  
GALECOMHV-RED




**DEEP OCHRE**  
GALECOMHV-DOCHRE




**PURPLE**  
GALECOMHV-RPUR




**AQUATIC BLUE**  
GALECOMHV-AQBLU



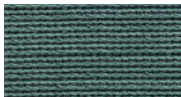
**NAVY BLUE**  
GALECOMHV-NBLU



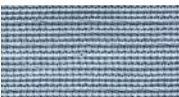
**BRIGHT GREEN**  
GALECOMHV-BG



**EMERALD**  
GALECOMHV-EME




**BRUNSWICK GREEN**  
GALECOMHV-BGRN




**STEEL GREY**  
GALECOMHV-STGRY



**CHARCOAL**  
GALECOMHV-CHAR



**BLACK**  
GALECOMHV-BLK



**DESERT SAND**  
GALECOMHV-DSAN



## COMMERCIAL 95 340

GALE PACIFIC

CODE	WIDTH - CM	ROLL LENGTH - M	WEIGHT - GSM
GALECOM95	300	40	340
GALECOM95FR	300	40	340 INDENT

Commercial 95® is a high quality knitted shade fabric designed for tension structures, awnings and shade covers specifically for commercial architectural applications: supplied in bulk rolls.

### PRODUCT FEATURES

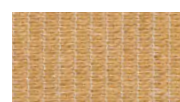
- 100% virgin grade polymers ensuring fabric consistency and performance
- UV block range from 91.1% to 95.5%
- 10 year warranty against UV degradation on fabric
- HDPE fabric that won't rot or absorb moisture
- Available in FR on Indent
- 100% recyclable
- 100% Lead and Phthalate free
- Stentered (heat-set) to reduce shrinkage
- Greenguard® and Oeko-Tex® certified



RIVERGUM GREEN



NATURAL  
GALECOM95-NAT



DESERT SAND  
GALECOM95-DSAN



DRIFTWOOD  
GALECOM95-DRFWD



YELLOW  
GALECOM95-YEL



ORANGE  
GALECOM95-ORA



CHERRY RED  
GALECOM95-CHERD



DEEP OCHRE  
GALECOM95-DOCHRE



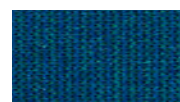
BLUEBIRD  
GALECOM95-BBIRD



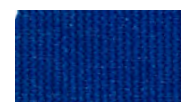
AQUAMARINE  
GALECOM95-AQMAR



SKY BLUE  
GALECOM95-SKBLU



TURQUOISE  
GALECOM95-TQSE



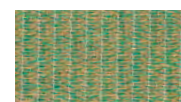
AQUATIC BLUE  
GALECOM95-AQBLU



NAVY BLUE  
GALECOM95-NBLU



BRUNSWICK GREEN  
GALECOM95-BGRN



RIVERGUM GREEN  
GALECOM95-RGUM



BRIGHT GREEN  
GALECOM95-BG



STONE  
GALECOM95-STNE



STEEL GREY  
GALECOM95-STGRY



GUN METAL  
GALECOM95-GMET



CHARCOAL  
GALECOM95-CHAR



BLACK  
GALECOM95-BLK

# DOCRIL AWNING BY CITEL



## DOCRIL AWNING

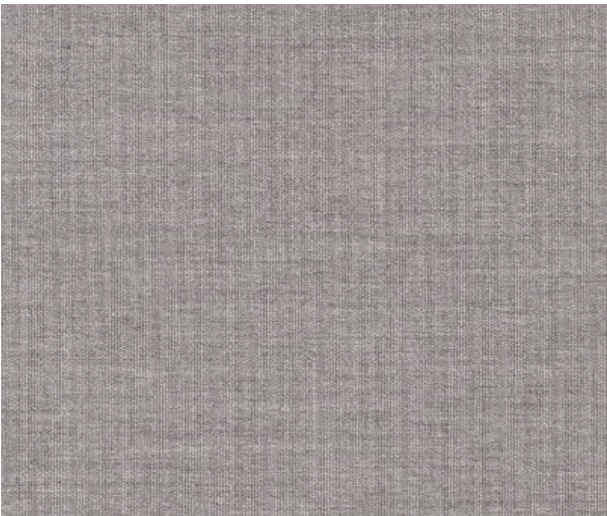
CITEL

CODE	WIDTH - CM	ROLL LENGTH - M	WEIGHT - GSM
DOCRIL120	120	60	295

Designed and manufactured in Spain and known for its superb quality with an extensive colour palette. Solution dyeing, with no mixing or dyeing during the finishing process adds pigments to the molecule of the fibre ensuring long lasting, vibrant colour.

### PRODUCT FEATURES

- 100% solution dyed acrylic fibre
- Mildew resistant
- Teflon coating
- Rot resistant
- 84 vibrant colours
- Oil repellant
- 10 Year warranty



DOCRIL120-1000



DOCIL120-001



DOCIL120-061



DOCIL120-080



DOCIL120-002



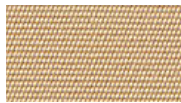
DOCIL120-086



DOCIL120-037



DOCIL120-079



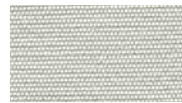
DOCIL120-591



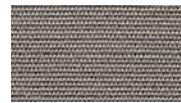
DOCIL120-106



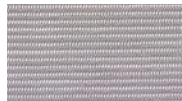
DOCIL120-592



DOCIL120-041



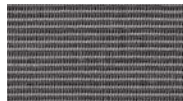
DOCIL120-067



DOCIL120-675



DOCIL120-1000



DOCIL120-676



DOCIL120-494



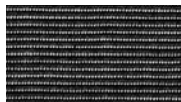
DOCIL120-113



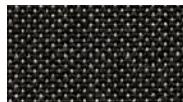
DOCIL120-198



DOCIL120-098



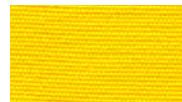
DOCIL120-677



DOCIL120-114



DOCIL120-039



DOCIL120-003



DOCIL120-066



DOCIL120-036



DOCIL120-035



DOCIL120-040



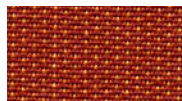
DOCIL120-683



DOCIL120-074



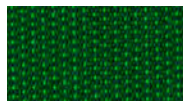
DOCIL120-060



DOCIL120-107



DOCIL120-145



DOCIL120-111



DOCIL120-006



DOCIL120-686



DOCIL120-072



DOCIL120-064



DOCIL120-328



DOCIL120-492



DOCIL120-103



DOCIL120-007



DOCIL120-063



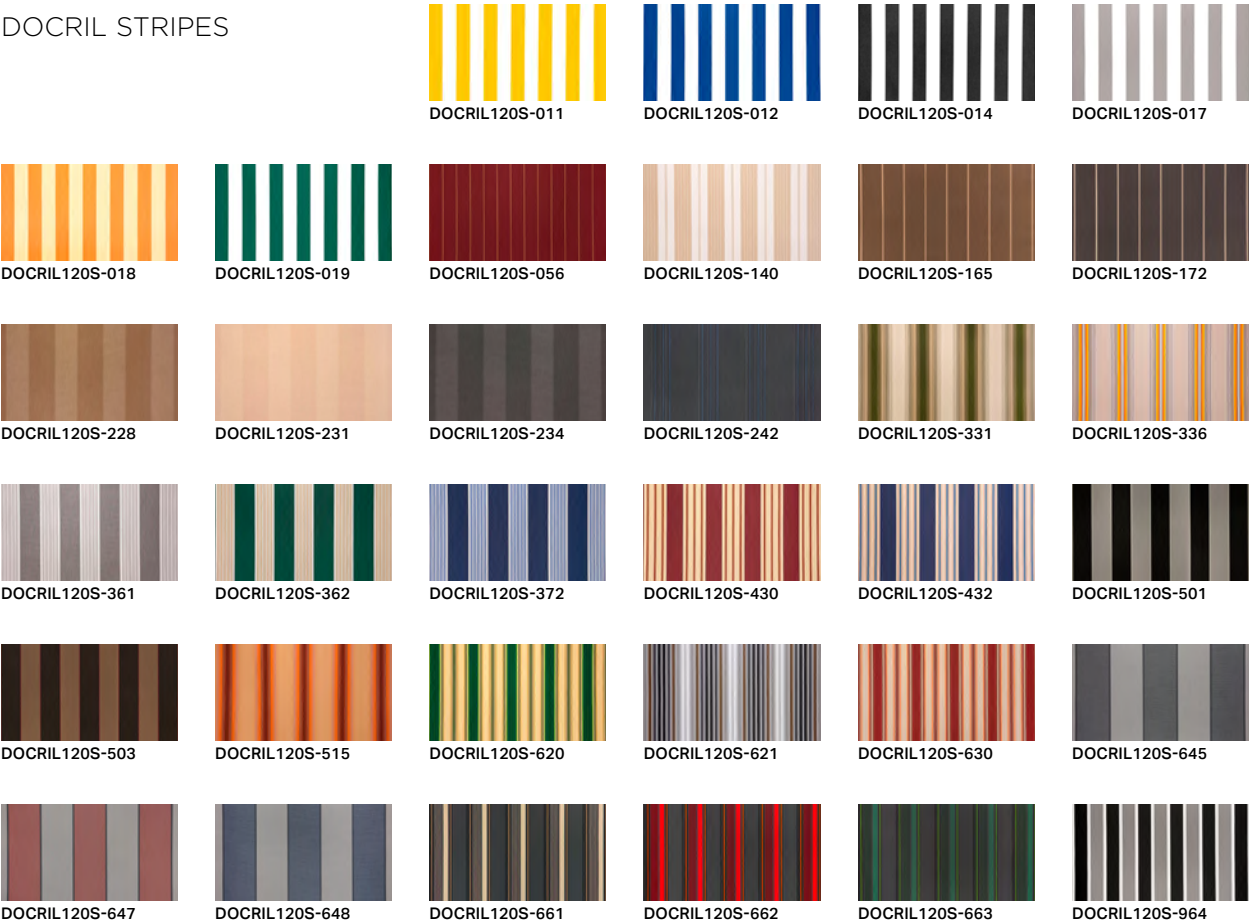
DOCIL120-077



DOCIL120-084



DOCRIL STRIPES





DOCRIL NAUTICA MARINE ACRYLIC CANVAS

CITEL

CODE	WIDTH - CM	ROLL LENGTH - M	WEIGHT - GSM
DOCRL60N	152.4	60	315

Docril Nautica is distinguished by its waterproofness, which makes this fabric the best option for sailboats and sailing lovers who need a higher water column to avoid leaks. It has excellent stability and great protection against UV rays (UPF50+).

PRODUCT FEATURES

- 100% water resistant
  - Teflon coated front
  - PU coated back
  - Oil repellant
- 5 Year warranty
  - Mildew resistant
  - Rot resistant



NATURAL  
DOCRL60N-061



LIGHT GREY  
DOCRL60N-041



GREY  
DOCRL60N-067



TOFFEE  
DOCRL60N-086



BURGUNDY  
DOCRL60N-060



PURE BLACK  
DOCRL60N-680



SAPPHIRE  
DOCRL60N-084



NAVY  
DOCRL60N-077



PACIFIC BLUE  
DOCRL60N-682



HERITAGE GREEN  
DOCRL60N-072

# DOCRIL MARINE ACRYLIC CANVAS

CITEL

CODE	WIDTH - CM	ROLL LENGTH - M	WEIGHT - GSM
DOCRIL60	152.4	60	295
DOCRIL200	200	60	295
DOCRIL250	250	50	295

Docril Marine is made in Spain by Citel who control the entire manufacturing process from procuring of the acrylic solution dyed fibre, to the spinning and finishing process, producing one of best acrylic canvasses available today. TEFLON® is used in the finishing process to increase wear resistance of the fabric. It also makes the fabric more resistant to soiling from atmospheric pollutants and general dirt particles whilst maintaining air permeability.

### PRODUCT FEATURES

- Water repellent
  - Teflon coated
  - Mildew resistant
- 5 Year warranty
  - Oil repellent

### DOCRIL MARINE 60"



**WHITE**  
DOCRIL60-681



**NATURAL**  
DOCRIL60-061



**TOFFEE**  
DOCRIL60-086



**LIGHT GREY**  
DOCRIL60-041



**GREY**  
DOCRIL60-067



**BURGUNDY**  
DOCRIL60-060



**SAPPHIRE**  
DOCRIL60-084



**NAVY**  
DOCRIL60-077



**PACIFIC BLUE**  
DOCRIL60-682



**HERITAGE GREEN**  
DOCRIL60-072



**PURE BLACK**  
DOCRIL60-680

### DOCRIL MARINE 200CM



**GREY**  
DOCRIL200-067



**CHARCOAL**  
DOCRIL200-098



**PURE BLACK**  
DOCRIL200-680



**HERITAGE GREEN**  
DOCRIL200-072



**SAPPHIRE**  
DOCRIL200-084



**OCEAN**  
DOCRIL200-077



**CAPPUCCINO**  
DOCRIL200-037

### DOCRIL MARINE 250CM



**GREY**  
DOCRIL250-067



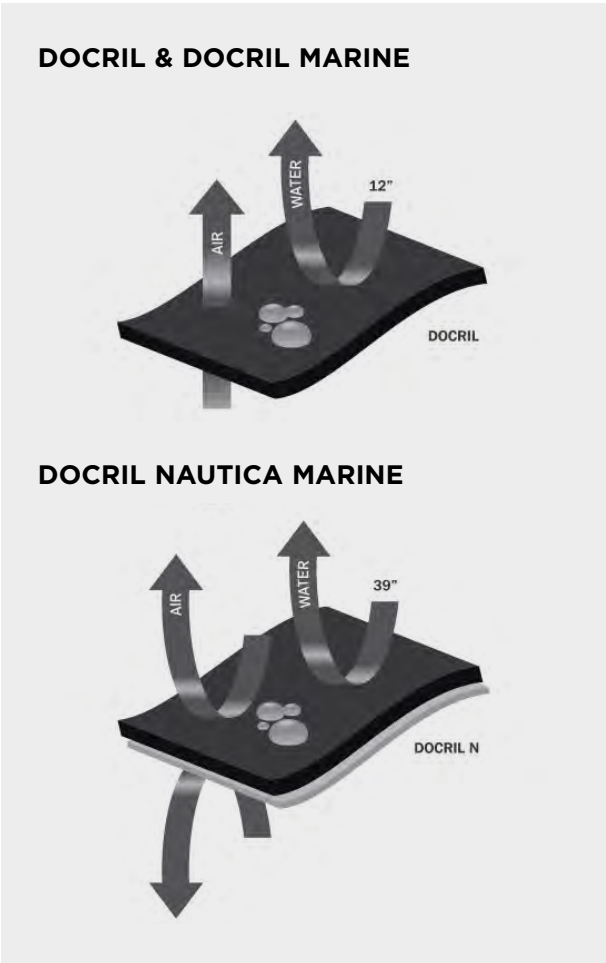
**CHARCOAL**  
DOCRIL250-098



**PURE BLACK**  
DOCRIL250-680



**NAVY**  
DOCRIL250-077





# ULTRAMARINE VINYL

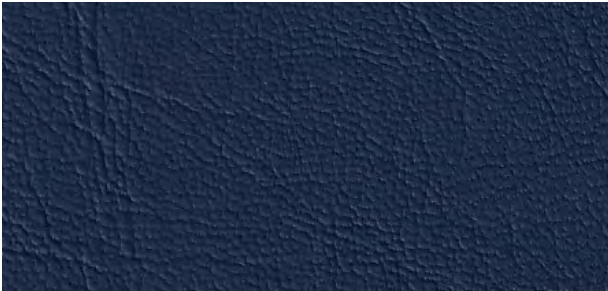
## ULTRAMARINE

CODE	WIDTH - CM	ROLL LENGTH - M	WEIGHT - GSM
VUSTA	137	30	646
VUPEB	137	30	646

UltraMarine is one of the highest quality marine grade vinyls available. UltraMarine is manufactured to meet the highest standards in Marine, Automotive and Commercial upholstery. 1.1mm thick and available in two different emboss styles which can be used individually or together to create a unique style for your application.

### PRODUCT FEATURES

- Indoor & outdoor use
  - UV treatment
  - Anti mildew
- Fire rated additives
  - Marine use
  - 2 Year warranty



ULTRAMARINE SMOOTH



ULTRAMARINE PEBBLE

### ULTRAMARINE SMOOTH



**POLAR**  
VUSTAPOL



**QUICKSILVER**  
VUSTAQUICKSILVER



**CREAM**  
VUSTACREAM



**BEACH BEIGE**  
VUSTABEACH



**SANDSTONE**  
VUSTASAND



**TAUPE**  
VUSTATAUPE



**YELLOWTAIL**  
VUSTAYELLOWTAIL



**ORANGE**  
VUSTAOR



**RED SNAPPER**  
VUSTARS



**PORT BURGUNDY**  
VUSTAPORTB



**STINGRAY**  
VUSTASG



**BLUEBOTTLE**  
VUSTABB



**NAVY SEAL**  
VUSTANS



**DARK CHARCOAL**  
VUSTADCHA



**BLACKTIP**  
VUSTABT

### ULTRAMARINE PEBBLE



**POLAR**  
VUPEBPOL



**CREAM**  
VUPEBCRE



**SANDSTONE**  
VUPEBSANDSTONE



**BAHAMA TAN**  
VUPEBBAHAMATAN



**CHOCOLATE**  
VUPEBCHO



**NAVY SEAL**  
VUPEBNAV



**BLUEBOTTLE**  
VUPEBBLU



**GREY NURSE**  
VUPEBGREYNURSE



**DARK CHARCOAL**  
VUPEBDCHA



**BLACKTIP**  
VUPEBBT



# PROTECT MESH 392

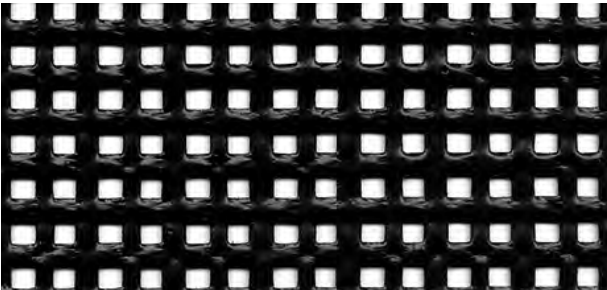
SERGE FERRARI

CODE	WIDTH - CM	ROLL LENGTH - M	WEIGHT - GSM
SF392S2	180	50	820

Protect 392 S2 is a very open (27%) fire retardant mesh with excellent weight/strength ratio enabling good transmission of light and ventilation. Very versatile material - use to block sun or wind, or for partitions or doors.

## PRODUCT FEATURES

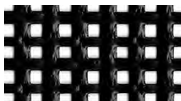
- Long lifespan and easy cleanability
- High weight and mechanical strength
- Fire certification M2/B1
- 10 year warranty



BLACK



WHITE  
SF392S2-100S



BLACK  
SF392S2-107S

# PROTECT MESH 492

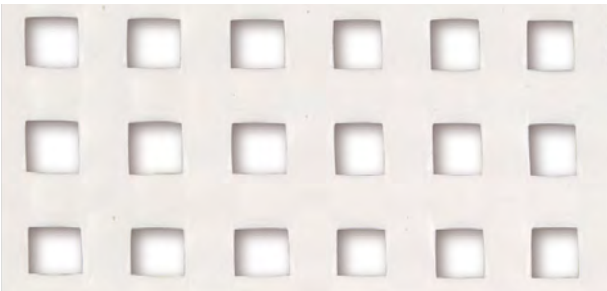
SERGE FERRARI

CODE	WIDTH - CM	ROLL LENGTH - M	WEIGHT - GSM
SF492S2	180	50	1050

Protect 492 S2 is an ultra-resistant, fireproof grid with a large opening mesh (opening factor 31%), ideal for catamaran trampolines, trampoline parks and sporting applications.

## PRODUCT FEATURES

- Excellent resistance to sea and mountain environments
- High weight, high opening factor and good mechanical resistance
- Fire resistant M2/ B1 classification
- 10 Year warranty



WHITE  
SF492S2-100S2



# FLEXLIGHT PERFORM 502S2 & 702S2

SERGE FERRARI

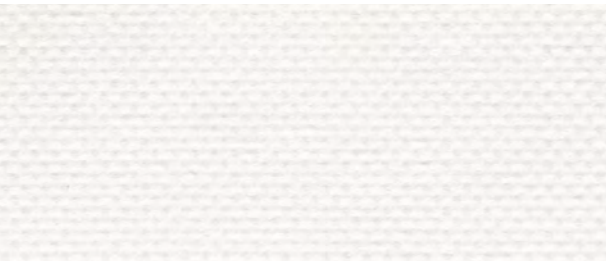
CODE	WIDTH - CM	ROLL LENGTH - M	WEIGHT - GSM
SF502 S2	250	50	590
SF702 S2	267	50	750

Bright white that is very easy to clean, so maintains a beautiful aesthetic with exceptional longevity. Suitable for halls and clear spans, high-end structures and air domes.

## PRODUCT FEATURES

- UV. resistance
  - Optimum weight/strength ratio
  - Serge Ferrari Précontraint technology
  - Exceptional luminosity
  - Anti-capillarity treatment
- S2 varnish: exceptional cleanability
  - 10 year warranty for 502S2
  - 15 year warranty for 702S2

## FLEXLIGHT PERFORM 502S2



502S2 TRANSLUCENT WHITE  
SF502-8604S2

## FLEXLIGHT PERFORM 702S2



702S2 TRANSLUCENT WHITE  
SF702-8604S2



# FLEXLIGHT CLASSIC 402 & 602

SERGE FERRARI

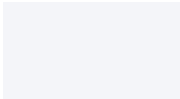
CODE	WIDTH - CM	ROLL LENGTH - M	WEIGHT - GSM
SF402	267	50	490
SF602	267	50	620

Flexlight Classic 402 and 602 are fireproof membranes that provide protection from all weather conditions, water and UV. They have excellent longevity and weldability along with being lightweight. Both transmit a comfortable level of natural light and are easy to clean for a longer “like-new” lifespan. Suitable for use in Clear span and aluminium structures, frame tents, pole tents and inflatable structures.

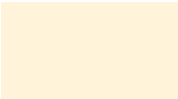
## PRODUCT FEATURES

- Easy to weld
  - Very good mechanical resistance
  - High transparency
- High dimensional stability due to Précontraint® technology
  - Optimum weight/strength ratio

FLEXLIGHT  
CLASSIC  
402

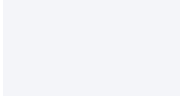


WHITE  
SF402-8104



CHAMPAGNE  
SF402-8341

FLEXLIGHT  
CLASSIC  
602



WHITE  
SF602-8100



# SOLARWEAVE 185

GALE PACIFIC

CODE	WIDTH - CM	ROLL LENGTH - M	WEIGHT - GSM
GALESOL400	205	50	185
GALESOL400	205	100 — JUMBO	185 INDENT

Recognised as the best in its category, Solarweave® 185 has proven its performance working in Australian conditions for more than 30 years. Its polyethylene-based, semi-transparent fabric is well suited for horticultural and hothouse applications.

Solarweave® 185 is made from premium UV-stabilised materials and coated in Gale Pacific's factory in Australia using our proprietary coating process. Excellent toughness and strength, yet is light enough for easily handling.

## PRODUCT FEATURES

- “Best in Show” light transmission provides greater yields
  - Dirt repellent PE coating for good appearance and reduced maintenance
  - Excellent durability and strength versus weight for ease of handling
  - Good resistance to accidental punctures, minimises repair and replacement costs
- Improved weldability and very good weld strength compared to similar products
  - Good resistance to chemicals allows versatility of use in number of greenhouse environments
  - Full 5 year UV degradation warranty



NATURAL



WHITE  
GALESOL400-WHT



NATURAL  
GALESOL400-NAT



# PREMIUM HORTSHADE

GALE PACIFIC

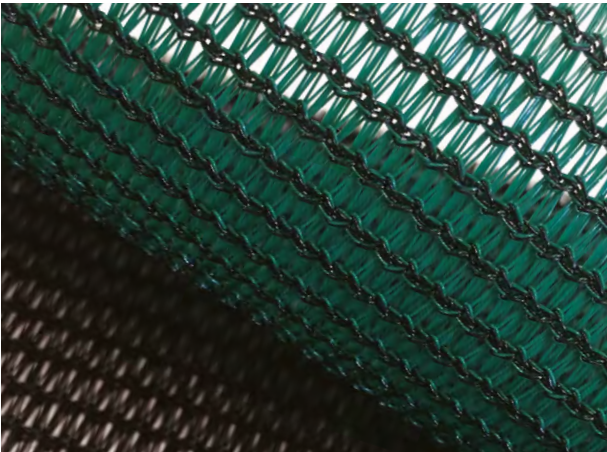
CODE	WIDTH - CM	ROLL LENGTH - M	WEIGHT - GSM
GALEHORTLGT2	200	50	160
GALEHORTLGT4	400	50	160
GALEHORTMED2	200	50	220
GALEHORTMED4	400	50	220
GALEHORTHVY2	200	50	276
GALEHORTHVY4	400	50	276

GALE Pacific’s Premium Hortshade® is a high-quality, knitted shadecloth that provides optimum performance in any climate. Available in a range of weights and colours and designed for use in horticultural, agricultural and commercial applications to protect animals/livestock, assets and crops.

Made from UV-stabilised HDPE, it is designed to resist sun damage, water absorption, rotting and will not tear or fray if cut. This recyclable fabric provides weather and pest protection, can enhance yields, improve crop aesthetics and provide an overall more efficient environment for plant growth.


## PRODUCT FEATURES

- 52%–77% UV block provides optimal conditions for plant growth or for protection of assets and livestock
- 100% lead and phthalate free
  - Greenguard® and Oeko-Tex® certified
  - Engineered in Australia
  - 100% recyclable
  - 10 year UV degradation warranty on fabric
- Strong HDPE fabric won't rot or absorb moisture and withstands harsh weather conditions
- Available in several grades, widths and colours




HEAVY – BLACK & FOREST GREEN

## PREMIUM HORTSHADE LIGHT



**WHITE**  
GALEHORTLGT2-WHT  
GALEHORTLGT4-WHT



**FOREST GREEN**  
GALEHORTLGT2-FGRN  
GALEHORTLGT4-FGRN



**BLACK**  
GALEHORTLGT4-BLK

## PREMIUM HORTSHADE MEDIUM



**WHITE**  
GALEHORTMED2-WHT  
GALEHORTMED4-WHT




**FOREST GREEN**  
GALEHORTMED2-FGRN  
GALEHORTMED4-FGRN




**BLACK**  
GALEHORTMED2-BLK  
GALEHORTMED4-BLK

## PREMIUM HORTSHADE HEAVY



**FOREST GREEN**  
GALEHORTHVY2-FGRN  
GALEHORTHVY4-FGRN



**BLACK**  
GALEHORTHVY2-BLK  
GALEHORTHVY4-BLK



## MEHLER POLYMAR TRAFFIC 8556

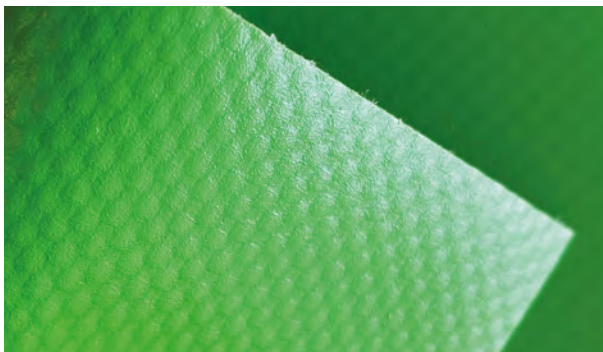
MEHLER TECHNOLOGIES

CODE	WIDTH - CM	ROLL LENGTH - M	WEIGHT - GSM
8556	300	60	900

POLYMAR® 8556 is Synonymous with the highest quality PVC for Truck Curtain Side and industrial applications globally. Made by Mehler Technologies® Hückelhoven plant in Germany. POLYMAR® 8556 is a calendar coated, 900gsm panama fabric with high quality lacquer finish for superior print finish and longevity. A comprehensive colour range of 19 colours stocked in New Zealand, matt white specifically for print applications and access to a further 32 colours ex stock in Germany.

### PRODUCT FEATURES

- PVC Laquered both sides for stability and longevity
- Matt white for custom printing
- White available in 320cm



YELLOW GREEN



BRILLIANT YELLOW  
MPT8556-119



SIGNAL YELLOW  
MPT8556-148



PURE ORANGE  
MPT8556-244



TRAFFIC RED  
MPT8556-290



FIRE RED  
MPT8556-356



ROYAL BLUE  
MPT8556-543



ULTRAMARINE  
MPT8556-544



ULTRA BLUE  
MPT8556-557



COBALT BLUE  
MPT8556-566



LAGOON  
MPT8556-586



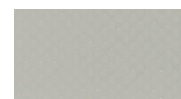
YELLOW GREEN  
MPT8556-619



TURKISH GREEN  
MPT8556-634



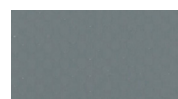
MOSS GREEN  
MPT8556-679



LIGHT GREY  
MPT8556-705



PALE GREY  
MPT8556-717



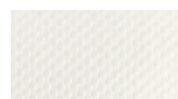
ALUMINIUM GREY  
MPT8556-763



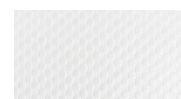
SILVER  
MPT8556-911717



DEEP BLACK  
MPT8556-9059



WHITE  
MPT8556-907



WHITE MATT - PRINT  
MPT8556-914/5943

# GP1000

QCD

CODE	WIDTH - CM	ROLL LENGTH - M	WEIGHT - GSM
GP1000	250	30	630

GP1000 is a premium quality 630gsm plain weave, spread coated PVC with gloss acrylic lacquer developed by QCD using the the highest quality resins and UV stabilisers.

## PRODUCT FEATURES

- 1000D polyester 7x7cm
  - Gloss acrylic lacquered both sides
  - Custom length roll available on Indent
- UV stabilised scrim and coating
  - FR AS1530.1
  - 4 year warranty

# RS1000

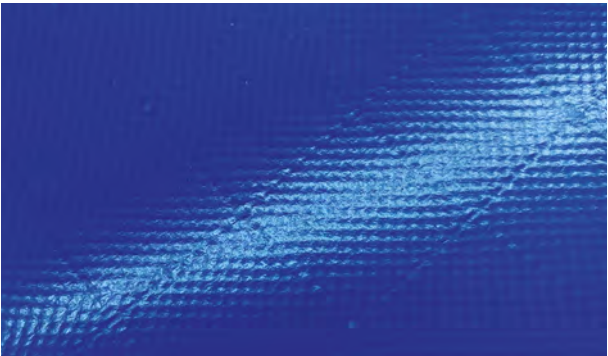
QCD

CODE	WIDTH - CM	ROLL LENGTH - M	WEIGHT - GSM
RS1000-2.5	250	30	670
RS1000-3.2	320	30	670

RS1000™ is a premium quality 670gsm rip stop reinforced PVC. Spread coated with gloss acrylic lacquer developed by QCD, using the the highest quality resins, UV stabilisers and fire retardant inhibitors.

## PRODUCT FEATURES

- 1000D Tex polyester 23x23 inch
  - Gloss acrylic lacquered both sides
  - FR AS1530.1
- UV stabilised scrim and coating
  - 4 year warranty
  - Most colours also available in 320cm width



BLUE



BLUE



WHITE  
GP1000WT



LIGHT GREY  
GP1000GY



DARK GREY  
GP1000DG



FOREST GREEN  
GP1000FG



BLUE  
GP1000BU



BLACK  
GP1000BK





WHITE  
RS1000WHITE-2.5  
RS1000WHITE-3.2



DARK GREY  
RS1000DARKGREY-2.5  
RS1000DARKGREY-3.2



FOREST GREEN  
RS1000FOREST-2.5  
RS1000FOREST-3.2



RED  
RS1000RED-2.5  
RS1000RED-3.2



BLUE  
RS1000BLUE-2.5  
RS1000BLUE-3.2



BLACK  
RS1000BLACK-2.5  
RS1000BLACK-3.2



BEIGE  
RS1000BEIGE-2.5



YELLOW  
RS1000YELLOW-2.5



ORANGE  
RS1000ORANGE-2.5



# AQUACON 345

GALE PACIFIC

CODE	WIDTH - CM	ROLL LENGTH - M	WEIGHT - GSM
GALEAQUACON	205 – 250	JUMBO	345

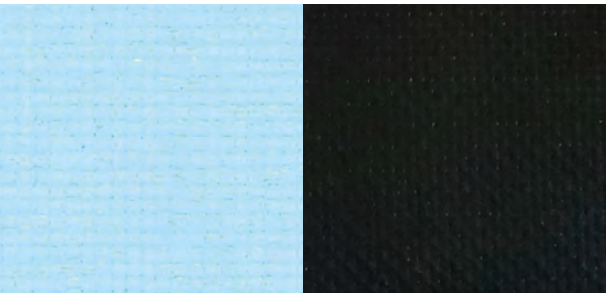
Aquacon™ 345 is a premium polyethylene scrim reinforced coated fabric, specifically designed for floating cover and liner applications.

Lightweight, flexible and durable Aquacon™ 345 exhibits class leading welding characteristics, providing effective and efficient field welding performance, ideal for in-factory fabrication and deployment on-site.

The high strength woven HDPE scrim reinforcement and engineered UV-stabilised polyethylene coatings provide outstanding puncture and abrasion resistance to withstand the harshest of installation and environmental conditions.

## PRODUCT FEATURES

- UV stabilised coatings
  - Lightweight
  - Waterproof
- Scrim reinforcing providing excellent puncture and abrasion resistance



ICE BLUE/BLACK  
GALEAQUACON-BL/BLK

# AQUAMARK 400 & 480

GALE PACIFIC

CODE	WIDTH - CM	ROLL LENGTH - M	WEIGHT - GSM
GALEAQU400-BLK	205	MINI JUMBO – JUMBO	400
GALEAQU400-BLK-25	250	50	400
GALEAQU480-BLK	250	50	480

Aquamark® is an easy to install, lightweight, flexible and extremely tough fabric. It is water potable certified, UV-stabilised polypropylene liner fabric, certified to AS/NZS 4020 standards. Featuring excellent welding characteristics and high tear strength it is ideal for a wide range of water and effluent containment and storage applications.

## PRODUCT FEATURES

- Large liner sections can be prefabricated for speedy installation
  - No plasticisers, eliminating leaching
  - AS4020 approved for contact with potable water. Ideal for grey, black and potable water storage
- Polypropylene coating resists flex cracking and chemicals
  - 100% recyclable material. No chlorine or heavy metals
  - High strength layered material with excellent dimensional stability

# CANVACON

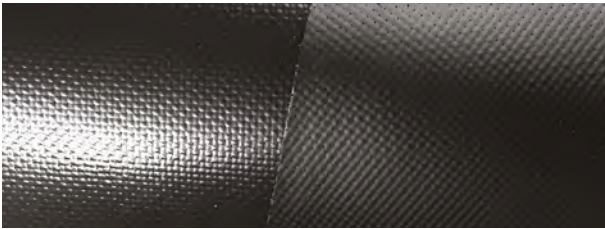
GALE PACIFIC

CODE	WIDTH - CM	ROLL LENGTH - M	WEIGHT - GSM
GALECAN5000E	205	50	260
GALECAN5000E	205	JUMBO 1000	260 <b>INDENT</b>
GALECAN7000E	205	50	306
GALECAN7000E	205	JUMBO 1000	306 <b>INDENT</b>

Canvacon® is a woven, polyethylene-based polyfabric designed for industrial and agricultural purposes. It provides excellent strength-to-weight performance, high abrasion and tear resistance, with excellent welding characteristics. Light weight polypropylene enables large liner sections to be prefabricated for speedy installation. Suitable for shelters covers, waterproof linings and membranes.

## PRODUCT FEATURES

- UV-stabilised coating and UV-stabilised basecloth
  - 3-year UV and delamination warranty
  - Excellent coating adhesion for improved welding
- 100% recyclable
  - Class leading flex and abrasion resistance
  - Dirt repellent PE coating reduces maintenance processing and costs

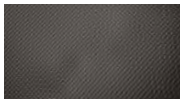


AQUAMARK  
400

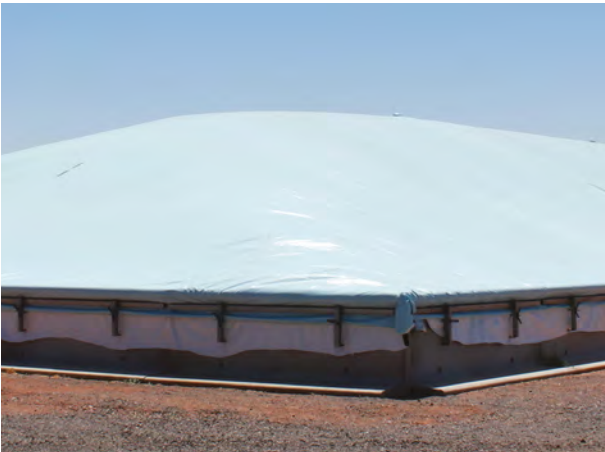


GLOSS BLACK  
GALEAQU400-BLK

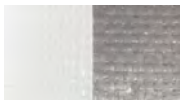
AQUAMARK  
480



MATT BLACK  
GALEAQU480-BLK



WHITE  
GALECAN5000E-WHT  
GALECAN7000E-WHT



WHITE/SILVER  
GALECAN5000E-S/W  
GALECAN7000E-S/W



BEIGE  
GALECAN5000E-BEI



BLUE  
GALECAN5000E-BLU  
GALECAN7000E-BLU



ICE BLUE/BLUE  
GALECAN5000E-ICEBLU



GREEN  
GALECAN5000E-GRN  
GALECAN7000E-GRN



# LANDMARK 340

GALE PACIFIC

CODE	WIDTH - CM	ROLL LENGTH - M	WEIGHT - GSM
GALELAN340	205	50	340
GALELAN340-GRN	205	JUMBO	340
GALELAN340TS1	205	50	340
GALELAN340TS2	205	50	400


Landmark® 340 is a high quality Polypropylene based polyfabric designed for a wide range of heavy duty industrial and agricultural tarpaulins, covers, curtains and membranes. Available in a range of colours and supplied in bulk rolls. The environmental alternative to PVC.

White is also available in a Tearstop, which is either coated once (TS1C), or twice (TS2C) for a more solid white finish.


## PRODUCT FEATURES

- Developed and coated in Australia
  - Polypropylene coating with excellent UV durability, chemical and flex crack resistance
  - Dirt repellent coating, assisting in-field welding and seam strength
  - Tear stop option available, coated once or twice
- Does not require polymeric or liquid plasticiser, eliminating leaching
  - Strong and Light
  - 100% Lead and Phthalate free and recyclable
  - Greenguard® and Oeko-Tex® certified


## LANDMARK 340




**WHITE**  
GALELAN340-WHT




**SKY BLUE**  
GALELAN340-SKB




**GREEN**  
GALELAN340-GRN



**BLACK/WHITE**  
GALELAN340-BLK/WHT




**SKY BLUE/WHITE**  
GALELAN340-SKB/WHT




**BLACK/GREEN**  
GALELAN340-BLK/GRN


## LANDMARK 340 TEARSTOP



**WHITE TS1C**  
GALELAN340TS1-WHT



**WHITE TS2C**  
GALELAN340TS2-WHT



**WHITE**  
**TEARSTOP WHITE**

# MULTIBLOCK 425

GALE PACIFIC

CODE	WIDTH - CM	ROLL LENGTH - M	WEIGHT - GSM
GALEMLT400	205	50	425

Made from premium UV-stabilised materials, Multiblock® 425 is the market leader with proven performance in harsh weather conditions.

The fabric is coated in Gale Pacific’s Australian factory using our proprietary coating process. The specialised multi-layer coating and laminated fabric reduces light in situations where poultry and livestock is kept. Multiblock® 425 is supplied in bulk rolls.

## PRODUCT FEATURES

- Black filament scrim with special laminate for effective ‘black out’
  - Multi-layer coating provides a high degree of water proofing
- Very good weld strength
  - UV-stabilised base fabric, coating and film layers
  - Long service life 100% recyclable



# HAY COVER

QCD

CODE	WIDTH - CM	ROLL LENGTH - M	WEIGHT - GSM
PEHAY-OG	400	50	300

High quality Woven PE Cloth. 14x14 construction. This product is available in 4m wide making it the perfect product for Hay covers. Product is backed by a 3 year UV warranty.



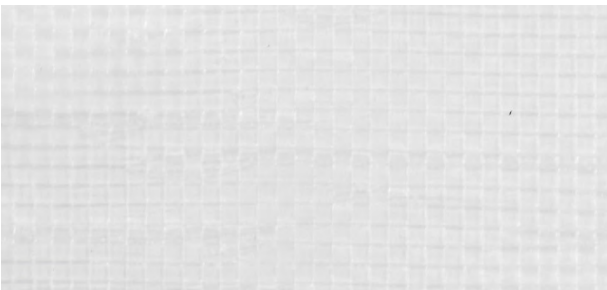
**OLIVE GREEN**  
PEHAY-OG

# PE NATURAL

QCD

CODE	WIDTH - CM	ROLL LENGTH - M	WEIGHT - GSM
PENAT	183	50	180

A lightweight semi-transparent PE fabric. PE natural can be used for patterning and wrapping. It is UV stabilised.



**TRANSLUCENT**  
PENAT

# RAZORBACK

CODE	WIDTH - CM	ROLL LENGTH - M	WEIGHT - GSM
RZB08	200	40	380
RZB12	200	40	520
RZB12RS	200	40	520

Razorback is manufactured to ensure superior performance and conformity to all required specifications. The canvas is passed through a modern proofing process which locks in all critical properties of UV stabilisation, colour fastness, mould and mildew inhibitors. This ensures that Razorback canvas has the best water resistance available in the market today. The advanced controlled drying technique ensures that there is very little shrinkage making it the go to choice for professionals.

## PRODUCT FEATURES

- 5 year warranty
  - Breathable
  - Impregnation
  - Lay flat
- Mould resistant
  - UV resistant
  - Rain resistant



## 80Z & 120Z PLAIN



**BLACK**  
RZB08BLACK  
RZB12BLACK



**DARK GREY**  
RZB08DKGREY  
RZB12DKGREY



**DARK OLIVE**  
RZB08DKOLIVE  
RZB12DKOLIVE



**LIGHT GREY**  
RZB08LTGREY  
RZB12LTGREY



**NAVY**  
RZB08NAVY  
RZB12NAVY



**SAND**  
RZB08SAND  
RZB12SAND

## 120Z RIPSTOP



**BLACK**  
RZB12RSBLACK



**DARK GREY**  
RZB12RSDKGREY



**DARK OLIVE**  
RZB12RSDKOLIVE



**LIGHT GREY**  
RZB12RSLTGREY



**NAVY**  
RZB12RSNAVY



**SAND**  
RZB12RSSAND



QBASE

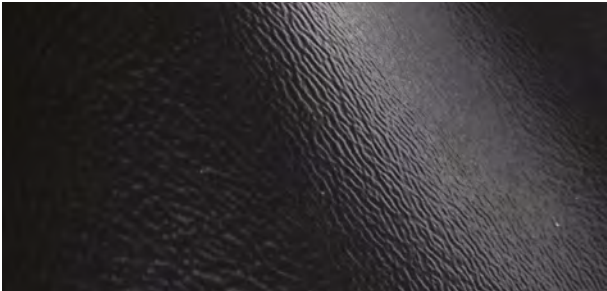
QCD

CODE	WIDTH - CM	ROLL LENGTH - M
QBASE	137	27.5

QBASE is a high quality vinyl suitable for domestic upholstery and Auto Trimming solutions.

PRODUCT FEATURES

- UV stabilised
  - High frequency weldable
  - PVC / expanded foam
- Knitted rayon / Polyester weave



BLACK



LIGHT NEUTRAL  
QBASE21



LIGHT GREY  
QBASE04



LIGHT GRAPHITE  
QBASE27



CLEAR GREY  
QBASE05



MEDIUM DARK PEWTER  
QBASE30



MEDIUM GREY  
QBASE06



MEDIUM PARCHMENT  
QBASE35



MEDIUM BEIGE  
QBASE25



DARK BROWN  
QBASE15



GRAPHITE  
QBASE31



BLACK  
QBASE01



MIDNIGHT BLACK  
QBASE22



DARK GREEN  
QBASE20

# QBOOT

QCD

CODE	WIDTH - CM	ROLL LENGTH - M	WEIGHT - GSM
QBOOT	137	45.8	275

QBOOT interior bootliner is an ideal solution when a lightweight and flexible product is required for a variety of end uses.

## PRODUCT FEATURES

- Needle punched polyester



SILVER



SILVER  
QBOOT02



DARK HEATHER  
QBOOT04



BLACK  
QBOOT01

# QFLOOR

QCD

CODE	WIDTH - CM	ROLL LENGTH - M	WEIGHT - GSM
QFLOOR	203	22.86	500

QFLOOR is an ideal solution for vehicle flooring and lining to provide a soft and plush finish.

## PRODUCT FEATURES

- Other colours available on request for roll amounts
- Needle punched polyester



MEDIUM GRAPHITE



MEDIUM NEUTRAL  
QFLOOR1807



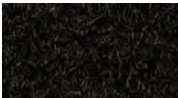
MEDIUM GRAPHITE  
QFLOOR1805



MEDIUM GREY  
QFLOOR1804



GRAPHITE  
QFLOOR1802



BLACK  
QFLOOR1801

# QLINE

QCD

CODE	WIDTH - CM	ROLL LENGTH - M
QLINE	150	45.8

QLINE is a durable and hardwearing Auto Headliner fabric suitable for new and replacement headliner solutions. Imported from the USA.

## QLINE DIAMOND



**LIGHT NEUTRAL**  
QLINE2335



**LIGHT GREY MEDIUM**  
QLINE6004



**DOVE GREY**  
QLINE2325



**OPAL GREY**  
QLINE2292



**LIGHT GREY**  
QLINE2294



**ANTHRACITE**  
QLINE1000



**BLACK**  
QLINE2300

## QLINE BRUSHED



**TOYOTA GREY**  
QLINE2291



**LIGHT GRAPHITE**  
QLINE2173



**BLUISH GREY**  
QLINE2206



**GRAPHITE**  
QLINE2001



**BLACK**  
QLINE1559

# TONNEAU COVER

QCD

CODE	WIDTH - CM	ROLL LENGTH - M	WEIGHT - GSM
TONNEAUPVCBLK	320	30	700

The Riplock base cloth gives high levels of strength and durability while the embossed surface finish offers excellent scratch resistance ensuring a long lasting PVC with many general purpose applications including tonneau covers, trailer covers, caravan, camping & leisure bags & covers, heavy duty sports equipment & most domestic cover applications. Tonneau Cover uses only the highest quality virgin grade PVC resins, UV stabilisers and importantly made using non-toxic DiNP plasticisers which are REACH, RoHS and VCA certified.



## PRODUCT FEATURES

- Available in both flat knit and brushed finishes
- Polyester knitted fabric with 3mm foam backing





**LIGHT QUARTZ**  
QLINE1913



**CLEAR GREY**  
QLINE2209



**MEDIUM GRAPHITE**  
QLINE2076





**BLACK**  
TONNEAUPVCBLK

## PRODUCT FEATURES

- Meets ROHA, REACH & VCA requirements
- Matt embossed finish

# WOOL CHECKS

CROSS LINKS INTERNATIONAL

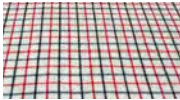
CODE	WIDTH - CM	ROLL LENGTH - M	WEIGHT - GSM
RCC	183	23	511

## PRODUCT FEATURES

- Made in India using recycled Australian wool hosiery
- Composition 80% wool / 20% other fibres



NAVY COLLAR CHECK  
RCC45



COLLAR CHECK RED  
RCC50



BLUE WHITE CHECK  
RCC42

# WOOL PLAIN KERSEY

CROSS LINKS INTERNATIONAL

CODE	WIDTH - CM	ROLL LENGTH - M	WEIGHT - GSM
RPC	183	25	511

## PRODUCT FEATURES

- Composition 80% wool / 20% other fibres
- Using recycled Australian wool hosiery



ROYAL BLUE  
RPC16



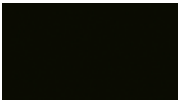
NAVY  
RPC12



BOTTLE GREEN  
RPC11



SCARLET  
RPC09



BLACK  
RPC10



BURGUNDY  
RPC15

# WOOL POLY LINING

TERRA LANA

CODE	WIDTH - CM	ROLL LENGTH - M	WEIGHT - GSM
RPW14W	140	30	500
RPW16G	160	30	500

## PRODUCT FEATURES

- Made in New Zealand



FELTED POLY WOOL



WHITE  
RPW14W



GREY  
RPW16G

# ULTRALON FOAM

CODE	NOMINAL DENSITY KG/M³	HARDNESS IFD 40%N	COMFORT/INDENT FACTOR	RESILIENCE MIN. %	TYPICAL USES
S-SLAB H35-130 1900X2060X900	35	130±20	1.75	40	SEATING & MATTRESSES
S-SLAB H35-165 1900X2060X960	35	165±20	1.75	40	SEATING & MATTRESSES
S-SLAB H35-200 1900X2060X960	35	200±20	1.80	40	SEATING & MATTRESSES
S-SLAB H42-500 2100X1890X720	42	500±20	1.80	20	HIGH LOAD BEARING, AUTOMOTIVE USES & VERY FIRM BEDDING
S-SLAB N27-160 2150X2060X1030	27	160±20	1.75	40	SEATING, AUTOMOTIVE USES, BEDDING & MATTRESS OVERLAY
S-SLAB N31-190 2150X2060X1000	31	190±20	1.75	35	HIGH LOAD BEARING, THIN SEATING & ARM RESTS
S-SLAB U29-400	29	400±20	1.85	20	CARPET UNDERLAY, HIGH LOAD BEARING UPHOLSTERY & PACKAGING

Ultralon Foam is used by the Marine, Construction, and Comfort sectors, complimenting the vast range of industries supplied by QCD - Marine Trimming, Motor Trimming, Caravan Builders, Boat Builders and Bedding Manufacturers. We are offering various specifications and grades so you can select the best option to suit many demanding, highly technical applications, resulting in foam that is perfectly tailored for each specific use.

The widths below are held in stock, different widths and profile bun cuts are available on request.



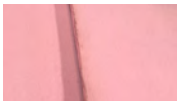
**S-SLAB H35-130**  
**1900X2060X900**  
25MM, 50MM, 75MM,  
100MM, 125MM, 150MM



**S-SLAB H35-165**  
**1900X2060X960**  
25MM, 50MM, 75MM,  
100MM, 125MM



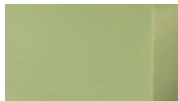
**S-SLAB H35-200**  
**1900X2060X960**  
25MM, 50MM, 75MM,  
100MM, 125MM



**S-SLAB H42-500**  
**2100X1890X720**  
25MM, 50MM



**S-SLAB N27-160**  
**1900X2060X1030**  
25MM, 50MM, 75MM,  
100MM



**S-SLAB N31-190**  
**1900X2060X1000**  
25MM, 50MM, 75MM,  
100MM



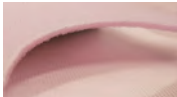
**S-SLAB U29-400**  
**2240X2060X1000**  
25MM, 50MM, 75MM,  
100MM

# QFOAM

QCD

CODE	WIDTH - CM	ROLL LENGTH - M
QFOAM1/8	150	25
QFOAM1/4	150	25
QFOAM3/8	150	25
QFOAM1/2	150	12.5

QFOAM is a Flexible Polyurethane foam that has been engineered to be easy to sew while still retaining its shape when used as a backing behind leather, vinyl and fabrics. The 100% Polyester Knit backing has superior stitch holding power and flexibility that allows it to follow contours without creasing, folding or tearing.



**3MM**  
QFOAM1/8



**6MM**  
QFOAM1/4



**10MM**  
QFOAM3/8



**12MM**  
QFOAM1/2

## PRODUCT FEATURES

- Superior stitch hold & definition
- Will not harbour fungus or bacteria
- Ideal for high humidity environments

# 200D ‘SOLARMAX’ FLAG NYLON

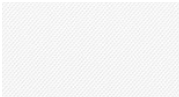
SOLARMAX

CODE	WIDTH - CM	ROLL LENGTH - M	WEIGHT - GSM
FH2	153	118	105

DuPont Bright 6.6 200 x 200 denier nylon with UV finish.  
Uses include Flags, banners, signs and windsocks.

## PRODUCT FEATURES

- Most colors available in Quick-Pick:  
9.1m/10 yard rolls
  - Firm flag finish
- Resists fading - UV inhibitor in all colors
  - Water repellent and quick drying



WHITE  
FH2WT



ROYAL BLUE  
FH2RB



CANADIAN RED  
FH2RD

\* OTHER COLOURS AVAILABLE ON SPECIAL ORDER



CANADIAN RED

## TERMS & CONDITIONS

### 1. Definitions

- 1.1 "Seller" shall mean QCD Limited and its successors and assigns.
- 1.2 "Customer" shall mean the Customer or any person acting on behalf of and with the authority of the Customer.
- 1.3 "Guarantor" means that person (or persons), or entity that agrees herein to be liable for the debts of the Customer on a principal debtor basis.
- 1.4 "Goods" shall have the same meaning as in section 119 of the Contract and Commercial Law Act 2017 and are goods supplied by the Seller to the Customer (and where the context so permits shall include any supply of Services as hereinafter defined).
- 1.5 "Services" shall mean all services supplied by the Seller to the Customer and includes any advice or recommendations (and where the context so permits shall include any supply of Goods as defined above).
- 1.6 "Price" shall mean the cost of the Goods as agreed between the Seller and the Customer subject to clause 4 of this contract.

### 2. Acceptance

- 2.1 Any instructions received by the Seller from the Customer for the supply of Goods and/or the Customer's acceptance of Goods supplied by the Seller shall constitute acceptance of the terms and conditions contained herein.
- 2.2 Where more than one Customer has entered into this agreement, the Customers shall be jointly and severally liable for all payments of the Price.
- 2.3 Upon acceptance of these terms and conditions by the Customer the terms and conditions are irrevocable and can only be rescinded in accordance with these terms and conditions or with the written consent of the manager of the Seller.
- 2.4 None of the Seller's agents or representatives are authorised to make any representations, statements, conditions or agreements not expressed by the manager of the Seller in writing nor is the Seller bound by any such unauthorised statements.
- 2.5 The parties agree that for the purposes of the Construction Contracts Act 2002 together with any amendments to the Construction Contracts Act 2022 this contract is not a commercial construction contract or a construction contract whether for a commercial or residential property or work and devise liability under this contract shall be in no way limited by any contract that the Customer may have entered into with a third party in relation to the supply of Goods and/or Services to that third party or the payment by the third party to the Customer of any monies whether by progress payments or otherwise.

### 3. Goods / Services

- 3.1 The Goods and/or Services are as described on the invoices, quotation, work authorisation or any other work commencement forms as provided by the Seller to the Customer.
- 3.2 Any credit limit approved by the Seller may be reviewed by the Seller from time to time at its sole discretion. The credit limit may be increased or reduced by the Seller following the review without the need to give notice to the customer for the increase or reduction.

### 4. Price And Payment

- 4.1 At the Seller's sole discretion the Price shall be either;
  - (a) as indicated on invoices provided by the Seller to the Customer in respect of Goods supplied; or
  - (b) the Seller's current Price, at the date of delivery of the Goods, according to the Seller's current Price list; or
  - (c) Seller's quoted Price (subject to clause 4.2) which shall be binding upon the Seller provided that the Customer shall accept in writing the Seller's quotation within thirty (30) days.
- 4.2 The Seller may by giving notice to the Customer (verbally or otherwise) at any time before delivery increase the Price of the Goods to reflect any variation from the plan of scheduled works or specifications beyond the reasonable control of the Seller which increase the cost of the Goods/Services by more than 10% of the quoted Price.
- 4.3 At the Seller's sole discretion a deposit may be required. The deposit amount or percentage of the Price will be stipulated at the time of the order of the Goods and shall become immediately due and payable.
- 4.4 Time for payment for the Goods shall be of the essence and will be stated on the invoice, quotation or any other order forms. If no time is stated then payment shall be on delivery of the Goods.
- 4.5 The Seller may withhold delivery of the Goods until the Customer has paid for them, in which event payment shall be made before the delivery date.
- 4.6 At the Seller's sole discretion, payment for approved Customer's shall be due on the twentieth (20th) of the month in which a statement is posted to the Customer's address or address for notices.
- 4.7 At the Seller's sole discretion, for certain approved Customers payment will be due seven (7) days following the date of the invoice.
- 4.8 Payment will be made by cash on delivery, or by cheque, or by bank cheque, or by direct credit, or by credit card, or by any other method as agreed to between the Customer and the Seller.
- 4.9 The Price shall be increased by the amount of any GST and other taxes and duties which may be applicable, except to the extent that such taxes are expressly included in any quotation given by the Seller.
- 4.10 The Seller will charge a 2.5% premium for all payments made by credit card or by contactless credit or debit card payment systems such as "Paywave".

### 5. Delivery Of Goods

- 5.1 Delivery of the Goods shall be made to the Customer's address. The Customer shall make all arrangements necessary to take delivery of the Goods whenever they are tendered for delivery.
- 5.2 The costs of carriage and any insurance which the Customer reasonably directs the Seller to incur, shall be reimbursed by the Customer (without any set-off or other withholding whatever) and shall be due on the date for payment of the Price. The

carrier shall be deemed to be the Customer's agent.

- 5.3 The Seller may deliver the Goods by separate instalments (in accordance with the agreed delivery schedule). Each separate instalment shall be invoiced and paid for in accordance with the provisions in this contract of sale.
- 5.4 Delivery of the Goods to a third party nominated by the Customer is deemed to be delivery to the Customer for the purposes of this agreement.
- 5.5 The Customer shall take delivery of the Goods tendered notwithstanding that the quantity so delivered shall be either greater or less than the quantity purchased provided that;
  - (a) such discrepancy in quantity shall not exceed 5%, and
  - (b) the Price shall be adjusted pro rata to the discrepancy.
- 5.6 The failure of the Seller to deliver shall not entitle either party to treat this contract as repudiated.
- 5.7 The Seller shall not be liable for any loss or damage whatever due to failure by the Seller to deliver the Goods (or any of them) promptly or at all.

### 6. Risk

- 6.1 If the Seller retains title to the Goods nonetheless all risk for the Goods passes to the Customer on delivery.
- 6.2 If any of the Goods are damaged or destroyed prior to title to them passing to the Customer, the Seller is entitled, without prejudice to any of its other rights or remedies under these terms and conditions (including the right to receive payment of the balance of the Price for the Goods), to receive all insurance proceeds payable in respect of the Goods. This applies whether or not the Price has become payable under these terms and conditions. The production of these terms and conditions by the Seller is sufficient evidence of the Seller's rights to receive the insurance proceeds without the need for any person dealing with the Seller to make further enquiries.

### 7. Defects/Returns

- 7.1 The Customer shall inspect the Goods on delivery and shall within seven (7) days subject to any mandatory provisions under the Consumer Guarantees Act 1993 of delivery notify the Seller of any alleged defect, shortage in quantity, damage or failure to comply with the description or quote. The Customer shall afford the Seller an opportunity to inspect the Goods within a reasonable time following delivery if the Customer believes the Goods are defective in any way. If the Customer shall fail to comply with these provisions the Goods shall be conclusively presumed to be in accordance with the terms and conditions and free from any defect or damage.
- 7.2 For defective Goods, which the Seller has agreed in writing that the Customer is entitled to reject, the Seller's liability is limited to either (at the Seller's discretion) replacing the Goods or repairing the Goods provided that:
  - (a) the Customer has complied with the provisions of clause 7.1;
  - (b) the Goods are returned at the Customer's cost within fourteen (14) days of the delivery date;
  - (c) the Seller will not be liable for Goods which have not been stored or used in a proper manner;
  - (d) the Goods are returned in the condition in which they were delivered and with all packaging material, brochures and instruction material in as new condition as is reasonably possible in the circumstances.
- 7.3 The Seller may (in its discretion) accept the Goods for credit but this may incur a handling fee of 15% of the value of the returned Goods plus any freight or \$100.00 which ever is the greater of.
- 7.4 Goods returned for credit must be returned within 14 days of purchase, are subject to approval, and incur a restocking fee being the greater of 15% of invoice value or \$100. Custom items manufactured or cut to length are non-refundable. In the event of a claim the seller liability is restricted to the invoice price only. Title of goods supplied shall not pass to the Customer until full payment is received.

### 8. Warranty

- 8.1 For Goods not manufactured by the Seller, the warranty shall be the current warranty provided by the manufacturer of the Goods. The Seller shall not be bound by nor responsible for any term, condition, representation or warranty given by the manufacturer of the Goods.

### 9. Default & Consequences Of Default

- 9.1 Interest on overdue invoices shall accrue from the date when payment becomes due daily until the date of payment at a rate of 2.5% compounding per calendar month and shall accrue at such a rate after as well as before any judgement.
- 9.2 If the Customer defaults in payment of any invoice when due, the Customer shall indemnify the Seller from and against all of the Seller's costs and disbursements including on a solicitor and own client basis and in addition all of the Seller's nominees costs of collection.
- 9.3 Without prejudice to any other remedies the Seller may have, if at any time the Customer is in breach of any obligation (including those relating to payment), the Seller may suspend or terminate the supply of Goods to the Customer and any of its other obligations under the terms and conditions. The Seller will not be liable to the Customer for any loss or damage the Customer suffers because the Seller exercised its rights under this clause.
- 9.4 If any account remains unpaid at the end of the second month after supply of the Goods or Services the following shall apply: An immediate amount of the greater of \$20.00 or 10.00% of the amount overdue shall be levied for administration fees which sum shall become immediately due and payable in addition to the interest payable under clause 9.1 hereof.
- 9.5 In the event that:
  - (a) any money payable to the Seller becomes overdue, or in the Seller's opinion the Customer will be unable to meet its payments as they fall due, or;
  - (b) the Customer becomes insolvent, convenes a meeting with its creditors or proposes or enters into an arrangement with creditors, or makes an assignment for the benefit of its creditors, or;
  - (c) a receiver, manager, liquidator (provisional or otherwise) or similar

person is appointed in respect of the Customer or any asset of the Customer, then without prejudice to the Seller's other remedies at law:

- (i) the Seller shall be entitled to cancel all or any part of any order of the Customer which remains unperformed in addition to and without prejudice to any other remedies; and
- (ii) all amounts owing to the Seller shall, whether or not due for payment, immediately become due and payable.

10. Title
- 10.1 It is the intention of the Seller and agreed by the Customer that property in the Goods shall not pass until:
- (a) The Customer has paid all amounts owing for the particular Goods, and
  - (b) The Customer has met all other obligations due by the Customer to the Seller in respect of all contracts between the Seller and the Customer, and that the Goods, or proceeds of the sale of the Goods, shall be kept separate until the Seller shall have received payment and all other obligations of the Customer are met.
- 10.2 Receipt by the Seller of any form of payment other than cash shall not be deemed to be payment until that form of payment has been honoured, cleared or recognised and until then the Seller's ownership of rights in respect of the Goods shall continue.
- 10.3 It is further agreed that:
- (a) Until such time as ownership of the Goods shall pass from the Seller to the Customer the Seller may give notice in writing to the Customer to return the Goods or any of them to the Seller. Upon such notice the rights of the Customer to obtain ownership or any other interest in the Goods shall cease.
  - (b) If the Customer fails to return the Goods to the Seller then the Seller or the Seller's agent may enter upon and into land and premises owned, occupied or used by the Customer, or any premises as the invitee of the Customer, where the Goods are situated and take possession of the Goods, without being responsible for any damage thereby caused.
11. Personal Property Securities Act 1999
- 11.1 Upon assenting to these terms and conditions in writing the Customer acknowledges and agrees that:
- (a) these terms and conditions constitute a security agreement for the purposes of the PPSA; and
  - (b) a security interest is taken in all Goods previously supplied by the Seller to the Customer (if any) and all Goods that will be supplied in the future by the Seller to the Customer during the continuance of the parties relationship.
- 11.2 The Customer undertakes to:
- (a) sign any further documents and/or provide any further information, such information to be complete, accurate and up-to-date in all respects, which the Seller may reasonably require to register a financing statement or financing change statement on the Personal Property Securities Register;
  - (b) indemnify, and upon demand reimburse, the Seller for all expenses incurred in registering a financing statement or financing change statement on the Personal Property Securities Register or releasing any Goods charged thereby;
  - (c) not register a financing change statement or a change demand without the prior written consent of the Seller;
  - (d) give the Seller not less than fourteen (14) days prior written notice of any proposed change in the Customer's name and/or any other change in the Customer's details (including but not limited to, changes in the Customer's address, facsimile number, or business practice); and
  - (e) immediately advise the Seller of any material change in its business practices of selling the Goods which would result in a change in the nature of proceeds derived from such sales.
- 11.3 The Seller and the Customer agree that nothing in sections 114(1)(a), 133 and 134 of the PPSA shall apply to these Terms and Conditions.
- 11.4 The Customer waives its rights as a debtor under sections 116, 120(2), 121, 125, 126, 127, 129, 131 and 132 of the PPSA.
- 11.5 Unless otherwise agreed to in writing by the Seller, the Customer waives its right to receive a verification statement in accordance with section 148 of the PPSA.
- 11.6 The Customer unconditionally ratifies any actions taken by the Seller under clauses 11.1 to 11.5. under and by virtue of the power of attorney given by the Customer to the Seller.
12. Security & Charge
- 12.1 Despite anything to the contrary contained herein or any other rights which the Seller may have howsoever:
- (a) Where the Customer and/or the Guarantor (if any) is the owner of land, realty or any other asset capable of being charged, both the Customer and/or the Guarantor agree to mortgage and/or charge all of their joint and/or several interest in the said land, realty or any other asset to the Seller or the Seller's nominee to secure all amounts and other monetary obligations payable under the terms and conditions. The Customer and/or the Guarantor acknowledge and agree that the Seller (or the Seller's nominee) shall be entitled to lodge where appropriate a caveat, which caveat shall be released once all payments and other monetary obligations payable hereunder have been met.
  - (b) Should the Seller elect to proceed in any manner in accordance with this clause and/or its sub-clauses, the Customer and/or Guarantor shall indemnify the Seller from and against all the Seller's costs and disbursements including legal costs on a solicitor and own client basis.
  - (c) To give effect to the provisions of clause [11, 12.1(a) to (b)] inclusive hereof the Customer and/or the Guarantor (if any) do hereby irrevocably nominate constitute and appoint the Seller or the Seller's nominee as the Customer's and/or Guarantor's true and lawful attorney to execute mortgages and charges (whether registrable or not) including such other terms and conditions as the Seller and/or the Seller's nominee shall think fit in his/her/its/their absolute discretion against the joint and/or several interest of the Customer and/or the Guarantor in any land, realty

or asset in favour of the Seller and in the Customer's and/or Guarantor's name as may be necessary to secure the said Customer's and/or Guarantor's obligations and indebtedness to the Seller and further to do and perform all necessary and other acts including instituting any necessary legal proceedings, and further to execute all or any documents in the Seller's absolute discretion which may be necessary or advantageous to give effect to the provisions of this clause.

13. Intellectual property
- 13.1 Where the Seller has designed or drawn Goods for the Customer, then the copyright in those designs and drawings shall remain vested in the Seller, and shall only be used by the Customer at the Seller's discretion.
- 13.2 The Customer warrants that all designs or instructions to the Seller will not cause the Seller to infringe any patent, registered design or trademark in the execution of the Customer's order.
14. Cancellation
- 14.1 The Seller may cancel these terms and conditions or cancel delivery of Goods and Services at any time before the Goods are delivered by giving written notice. On giving such notice the Seller shall promptly repay to the Customer any sums paid in respect of the Price for those Goods. The Seller shall not be liable for any loss or damage whatsoever arising from such cancellation.
- 14.2 At the Seller's sole discretion the Customer may cancel delivery of Goods and/or Services. In the event that the Customer cancels delivery of Goods and/or Services the Customer shall be liable for any costs incurred by the Seller up to the time of cancellation.
15. Privacy Act 2020
- 15.1 The Customer and the Guarantor/s (if separate to the Customer) authorises the Seller to:
- (a) collect, retain and use any information about the Customer, for the purpose of assessing the Customer's creditworthiness or marketing products and services; and
  - (b) to disclose information about the Customer, whether collected by the Seller from the Customer directly or obtained by the Seller from any other source, to any other credit provider or any credit reporting agency for the purposes of providing or obtaining a credit reference, debt collection or notifying a default by the Customer.
- 15.2 Where the Customer is a natural person the authorities under clause 15.1 are authorities or consents for the purposes of the Privacy Act 2020.
- 15.3 The Customer shall have the right to request the Seller for a copy of the information about the Customer retained by the Seller and the right to request the Seller to correct any incorrect information about the Customer held by the Seller.
16. Customer's Disclaimer
- 16.1 The Customer hereby disclaims any right to rescind, or cancel the contract or to sue for damages or to claim restitution arising out of any misrepresentation made to him by any servant or agent of the Seller and the Customer acknowledges that he buys the Goods relying solely upon his own skill and judgement.
18. Unpaid Seller's Rights To Dispose Of Goods
- 18.1 In the event that:
- (a) the Seller retains possession or control of the Goods; and
  - (b) payment of the Price is due to the Seller; and
  - (c) the Seller has made demand in writing of the Customer for payment of the Price in terms of this contract; and
  - (d) the Seller has not received the Price of the Goods,
- then, whether the title in the Goods has passed to the Customer or has remained with the Seller, the Seller may dispose of the Goods and may claim from the Customer the loss to the Seller on such disposal.
19. Consumer Guarantees Act 1993
- 19.1 This agreement is subject to the provisions of the Consumer Guarantees Act 1993 in all cases except where the Customer is contracting within the terms of a trade/business (which cases are specifically excluded).
20. General
- 20.1 If any provision of these terms and conditions shall be invalid, void or illegal or unenforceable the validity existence, legality and enforceability of the remaining provisions shall not be affected, prejudiced or impaired.
- 20.2 All Goods and Services supplied by the Seller are supplied subject to the laws of New Zealand and the Seller takes no responsibility for changes in the law that affect the Goods or Services supplied.
- 20.3 The Seller shall be under no liability whatsoever to the Customer for any indirect loss and/or expense (including loss of profit) suffered by the Customer arising out of a breach by the Seller of these terms and conditions.
- 20.4 In the event of any breach of this contract by the Seller the remedies of the Customer shall be limited to damages. Under no circumstances shall the liability of the Seller exceed the Price of the Goods.
- 20.5 Neither party shall be liable for any default due to any act of God, terrorism, war, strike, lock out, industrial action, flood, storm or other event beyond the reasonable control of either party.
- 20.6 The Customer shall not set off against the Price amounts due from the Seller.
- 20.7 The Seller may license or sub-contract all or any part of its rights and obligations without the Customer's consent.
- 20.8 The Seller reserves the right to review these terms and conditions at any time and from time to time. If, following any such review, there is to be any change in such terms and conditions, that change will take effect from the date on which the Seller notifies the Customer of such change.

<b>QCD Limited</b>	—	—	—	<b>AKL</b>	<b>CHCH</b>
	<b>AKL</b>	<b>CHCH</b>	PO Box 112225	373D Neilson Street	24 Disraeli Street
	P. +64 9 815 7500	P. +64 3 384 9329	Penrose	Penrose	Addington
<b>qcd.co.nz</b>			Auckland 1061	Auckland 1061	Christchurch 8024



qcd.co.nz